

QUICK REFERENCE

RS&A COMPANY INFORMATION.....	Page 1 & 2
PATTERN EVIDENCE TRAINING.....	Page 3
RS&A SEQUENTIAL TRAINING COURSES.....	Page 4
NATIONAL LP EXAMINER TRAINING ACADEMY.....	Page 5 & 6
MOCK LPE TRAINING ACADEMY SCHEDULE.....	Page 7
COMPARISON EXERCISES.....	Page 8
PROFICIENCY TESTING.....	Page 9 & 10
CONSULTING SERVICES.....	Page 11
BACKLOG REDUCTION/ELIMINATION.....	Page 12
COMPETENCY TESTING FOR LPE's.....	Page 13 & 14
QUALITY MANAGEMENT SERVICES.....	Page 15 & 16
FOOTWEAR SERVICES.....	Page 17
RS&A CONTACT INFORMATION.....	Page 18



1-866-832-6772

www.RonSmithandAssociates.com

RON SMITH & ASSOCIATES, INC.

FORENSIC SERVICES OFFERED

- Forensic Training Services
- Forensic Consulting Services
- Quality Management Services
- Attorney Consulting Services

FORENSIC PRODUCTS OFFERED

- National Latent Print Examiner Training Academy
- Proficiency Tests
- Multi-level Competency Testing for LPEs
- Comparison Practice Exercises

WE ARE ACCREDITED

ISO/IEC 17025 & ISO/IEC 17043

OUR FULL-TIME TEAM

We employ full-time forensic specialists and business professional to provide you with a fully developed and carefully designed business management team.

STRONG PARTNERSHIPS

RS&A maintains contractual relationships with excess of 100+ professionally certified forensic specialists in a wide range of forensic disciplines.

RS&A HEADQUARTERS LABORATORY

Our Collinsville, MS Laboratory is accredited to ISO/IEC 17025 standards.



Collinsville, MS

OUR COMMITMENT TO YOU

Our commitment to you and your agency is real. If we can't provide the services that we advertise to your satisfaction, then we don't deserve your business. Before our company ever drew its first breath, the firm decision was made that we would always seek to do God's will in our business dealings, as well as in our lives. We have strived to do just that and have been blessed both as a company and as individuals.

RS&A has a proven track record of dozens upon dozens of successful contracts with federal, state and local agencies, as well as private entities. We do what we say we will do.

RS&A has been able to grow significantly since our incorporation in 2002, and the future is bright indeed. There will always be a need for high quality forensic services, and by working with government agencies and other related private entities, we can continue to be an integral part of the solution in both the criminal and civil justice communities.

Accurate, timely, fair, objective, efficient, cost effective

These are not just words, but rather descriptions of our commitment to each of our clients. It is this level of commitment that Ron Smith & Associates, Inc. will bring to you and your agency if provided the opportunity.

COMPANY MOTTO

We do the right thing because it is the right thing. We need no other reason!

COMPANY PHILOSOPHY

GOD created only two kinds of days: Good Days and Great Days! One of the greatest blessings in life is that you get to pick which one you are going to have each morning when you wake up!

OUR COMPANY WEBSITE

Everything you need to know about RS&A services and products is on our company website. Visit us online to learn more about how RS&A can help you and your agency today!

www.RonSmithandAssociates.com

RS&A TRAINING DIVISION

RS&A TRAINING MISSION

We strive to provide affordable, high quality, "hands-on" forensic training services to local, state, and federal agencies across North America and beyond through the implementation and maintenance of a carefully designed sequential modular training approach. In addition, it is our goal to walk alongside students of all ability levels and see them advance to a state wherein they could become professionally certified by the International Association for Identification.

A HISTORY OF SUCCESS

For over twenty years, Ron Smith, and now Ron Smith & Associates, Inc. have provided high quality forensic training courses throughout the United States and around the world. By building a team of internationally regarded instructors to work hand in hand with our full time Training Division support staff, RS&A has developed a delivery system second to none in the industry. Over 20,000+ students have received training from RS&A and that number grows significantly every year.

This training has been brought to forensic specialists in all fifty states and continues to be the primary resource for forensic training in North America.

WHAT ARE THE KEYS TO THE RS&A TRAINING PROGRAM SUCCESS



- "TOP GUN" Instructors
- Professional Support Staff
- Cost Efficiency
- Long Term Relationships with MANY Hosting Agencies
- Courses that are I.A.I. Approved to Meet Certification Requirements
- Access to High Quality Training Materials which are current
- "Hands-On" Approach to Learning
- Sequential Training Programs
- Regional Availability

For complete training details visit us online at:

www.RonSmithandAssociates.com

or email our training division at:

training@ronsmithandassociates.com

RS&A SEQUENTIAL TRAINING COURSES

For maximum benefit, the following courses should be taken in the sequences noted below.

FRICTION RIDGE (LATENT) CURRICULUM

1. Introduction to the Science of Friction Ridge Examination - 40 Hours
2. Palm Print Comparison Techniques - 24 Hours
3. Essential Ridgeology Concepts - 40 Hours
4. Latent Print Search and Comparison Techniques - 40 Hours
5. Courtroom Testimony Techniques - Success Instead of Survival - 16 Hours
6. Examination of Simultaneous Impressions - 24 Hours
7. Comparison of Plantar Friction Ridge Impressions - 16 Hours
8. Advanced ACE-V Applications for Fingerprint Examiners - 40 Hours
9. Scientific Analysis: From the Laboratory to the Witness Stand - 40 Hours
10. Understanding Exclusion and Sufficiency Decisions - 36 Hours
11. Complex Latent Print Examinations - 40 Hours
12. Practical Answers to Challenging Questions in the Courtroom - 24 Hours
13. Incorporation of Technology into the ACE-V Process - 24 Hours
14. Finding Latent Evidence with Chemistry & Light - 32 Hours
15. Forensic Digital Imaging for Latent Print Examiners: Extend Your Reach - 32 Hours
16. Advanced Sequential Processing - A Hands-on Workshop - 32 Hours
17. IAI Latent Print Certification Test Preparation Training - 40 Hours

FOOTWEAR & TIRE TRACK CURRICULUM

1. Detection, Documentation and Recovery of Footwear & Tire Track Evidence - 24 Hours
2. The Analysis and Comparison of Footwear Impression Evidence - 36 Hours

TESTIMONY CURRICULUM

1. Courtroom Testimony Techniques - Success Instead of Survival - 16 Hours
2. Scientific Analysis (ACE-V): From the Laboratory to the Witness Stand - 40 Hours
3. Expert Witness Testimony for Laboratory Analysts - 16 Hours
4. Practical Answers to Challenging Questions in the Courtroom - 24 Hours

FRICTION RIDGE (TENPRINT) CURRICULUM

1. Introduction to the Science of Friction Ridge Examination - 40 Hours
2. Essential Ridgeology Concepts - 40 Hours
3. Palm Print Comparison Techniques - 24 Hours
4. Courtroom Testimony Techniques - Success Instead of Survival - 16 Hours
5. Friction Ridge Examination for Tenprint Examiners - 24 Hours
6. Scientific Analysis: From the Laboratory to the Witness Stand - 40 Hours

CRIME SCENE CURRICULUM

1. CSI Physical Evidence - Processing the Crime Scene - 16 Hours
2. Fundamentals of Crime Scene Examination and Evidence Collection - 40 Hours
3. Digital Crime Scene and Evidence Photography - 24 Hours
4. Forensic Examination of Violent Crime Scenes - 24 Hours
5. Finding Latent Evidence with Chemistry & Light - 32 Hours
6. Advanced Sequential Processing - A Hands-on Workshop - 32 Hours
7. Fingerprint and Trace Evidence Detection and Collection on Skin - 32 Hours
8. Taking the Crime Scene into the Interrogation Room - 16 Hours

CRIME SCENE PROCESSING EXAMINATION COURTROOM



NATIONAL LATENT PRINT EXAMINER TRAINING ACADEMY

www.RonSmithandAssociates.com/LPAcademy

This **20 week training program** is designed to provide agencies with a Latent Print Examiner who is trained to competency. This academy, with 800 hours of formal training, will produce graduates who are capable of performing "supervised case work", and once experience requirements are met, they will be ready to apply for IAI Latent Print Certification.

? Where are you going to find fully trained Latent Print Examiners to fill your future vacancies? There are always more vacant positions than there are qualified LPEs to fill them.

Are you willing to invest the 1-2 years needed for your senior staff members to apprentice new trainees to the point where they can contribute to case production? If so, what's the REAL cost of this approach, and will you then find yourself in a continual training mode?

💡 We understand your staffing needs and we believe there is a better way. Check our website to see dates for the next session of the RS&A National Latent Print Examiner Training Academy. This is a carefully designed intense 20 week training program which will produce a Latent Print Examiner who can immediately make a substantial impact on your operation.

👤 Students will be required to meet stringent educational, ethical and visual acuity standards to be accepted into the program. Throughout the academy they will be routinely tested to ensure their competence in each module of instruction. They will be ready for supervised casework as soon as they arrive at your agency and will have already met or exceeded all requirements for IAI Latent Print Examiner certification, with the possible exception of work experience. They will have already passed a series of practice tests even more difficult than the actual IAI CLPE examination.

🌐 RS&A is internationally known as the premier forensic identification training company, and we have successfully trained literally hundreds upon hundreds of latent print examiners to competency through the efforts of our cadre of world class instructors. Although this is the first such academy of its scale in the United States, it is simply a reconfiguring of what we have been doing for years. We know latent prints and we know training!

🏛️ The academy will be held at a state of the art training facility in Meridian, MS, which is a new facility and will be your home away from home. Ideally located near shopping and dining, the facility is just outside the city center. Check our website for photos and additional details.

WEEK-TO-WEEK ACADEMY SCHEDULE ON THE NEXT PAGE...DON'T MISS IT!



Students will be housed in a one person room with access to internet, cable TV, housekeeping services, pool facilities, fitness center, laundry facilities, etc. along with three meals per day. The housing and meals are all included in the academy tuition. Transportation for each student is highly recommended and is the sole responsibility of the student or sponsoring agency.



The per student cost for the National Latent Print Examiner Training Academy, to include all instruction, lodging and meals is \$27,500.00, which is far less than what it would cost your agency to complete this training utilizing your own case working analysts. Not only do you have the student's training completed in a fraction of the time, but they are getting access to a team of instructors who are highly skilled and fully committed to the success of your employee.

Please contact us if you have specific budget requirements or need a breakdown of training tuition, room and board, and meals.



Scan QR Code to find additional Academy details, a virtual tour with photos, FAQ's, an online admission application, contact information and more.



ACADEMY TOPICS OF INSTRUCTION

- Week 1 - Introduction to the Science of Friction Ridge Examination
- Week 2 - Basic Latent Print Processing Methods
- Week 3 - Digital Photography Basics: from the Crime Scene to the Laboratory
- Week 4 - ALS/LASER and Advanced Latent Print Processing
- Week 5 - Palm Print Comparison Techniques
- Week 6 - Essential Ridgeology Concepts
- Week 7 - Comparison and Evaluation Skill Development / Bias and Ethics
- Week Off - Thanksgiving**
- Week 8 - Evaluation of Latent Finger, Palms, Tips, Joints and Sufficiency
- Week 9 - AFIS Minutia Plotting, Automated Searching/Candidate Reviews and Plantar Impressions
- Week 10 - Recording of Known Impressions / Inked and Live Scan
- Week 11 - Digital Imaging for Latent Print Examiners
- Week Off - Christmas**
- Week 12 - Comparison and Evaluation Skill Development / Exclusion and Inconclusive Decisions
- Week 13 - ACE-V Methodology, Examination Documentation Best Practices and Conclusions
- Week 14 - Understanding Simultaneous and Distorted Impressions
- Week 15 - Courtroom Testimony Techniques / Success Instead of Survival
- Week 16 - Comparison and Evaluation Skill Development
- Week 17 - Complex Latent Print Examinations
- Week 18 - Friction Ridge Expert Witness Testimony Techniques
- Week 19 - IAI Pre-Certification Test Preparation Training
- Week 20 - Finals Week, Oral Boards and Graduation Exercises



IF YOU HAVE SPECIFIC ACADEMY QUESTIONS

Contact Jon Byrd - Academy Director

7 Call: 1-866-832-6772 or E-mail: jon@ronsmithandassociates.com

COMPARISON EXERCISES

BY RON SMITH & ASSOCIATES

It is understood that the best preparation for casework is training and performance through a repetition of comparison exercises.

RS&A comparison exercises are designed to help grow or enhance the comparison ability of an examiner by providing them with comparison time. Frequently during training it is difficult to provide enough comparison exercises for a trainee to work on in order to help enhance their skillset.

We offer two types of comparison exercises:

1. Scenario Based Comparison Exercises

These exercises are built to closely mimic daily casework. Each comparison exercise contains a written scenario, supporting items of evidence, answer sheet, and a sealed answer key.

- **Latent Print Comparison:** Contains a minimum of 10 latent prints and 4 known print cards. The known prints can include fingers, tips, or palms.
- **Tenprint Comparison:** Contains pattern recognition, AFIS side by side comparisons, known to known comparisons, as well as other tenprint examiner comparison exercises.
- **Footwear Comparison:** Contains a minimum of 6 question impressions and 4 known impressions.
- **Tire Track Comparison:** Contains a minimum of 3 question impressions, photographs of known tire sections, and fully rolled known standards.

2. Latent Print Comparison Exercises for LPEs

Each latent to known comparison exercise contains between 20-50 latent prints and between 4-11 known exemplars. These exercises vary in processing, location, orientation, difficulty, as well as how the known prints are captured. These tests can be purchased individually or sold in sets (100 and 200 series) to give you the flexibility you need.

If your laboratory is interested in testing the laboratory quality system then please refer to our **Proficiency Tests**.

If your laboratory is interested in testing an individual, please refer to our **Competency Testing**.

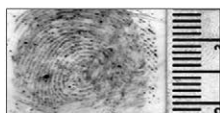
RS&A PROFICIENCY TESTING

Built by Examiners for Examiners

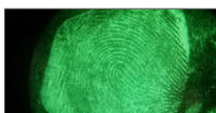
WHY USE RS&A PROFICIENCY TESTS?

Ron Smith & Associates, Inc. has become an industry leader in the science of impression evidence examination. We are now using our experience and knowledge to bring to you proficiency tests that far surpass any test on the market today.

DISCIPLINES THAT ARE NOW AVAILABLE FOR PURCHASE



LATENT PRINT
COMPARISON



LATENT PRINT
PROCESSING



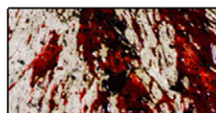
TENPRINT
COMPARISON



FOOTWEAR
COMPARISON



TIRE TRACK
COMPARISON



CRIME SCENE PROCESSING
PRESUMPTIVE BLOOD TESTING



CRIME SCENE PROCESSING
LATENT PRINT PROCESSING



CRIME SCENE PROCESSING
SHOOTING INCIDENT DOCUMENTATION

SPRING

SUMMER

FALL

3 CRIME SCENE TESTS EVERY YEAR

SUPERIOR TEST QUALITY

Proficiency Test quality has long been an issue with some proficiency test providers. You can rest assured that RS&A Proficiency Tests will provide participants with original high resolution images, high quality printing, and relevant high quality test samples.

As examiners, we know the importance of getting high quality proficiency tests when a career and reputation are on the line.

MEANINGFUL & ACCURATE RESULTS

We are keenly aware that the statistics contained in published Proficiency Test Results can be used properly or misused by naysayers of the impression evidence sciences. In recent years, these misleading summary results have been used as a tool for the defense bar to attack unsuspecting forensic identification specialists. It is only through a review of the test results, in relation to experience, certifications and training of the participants, that the published results can become meaningful and truly representative.

Regardless of the results, at least our profession will know that the published data is not only accurate, but meaningful.

EASY TESTING PROCESS

- Use the RS&A website to select and purchase the tests online.
- Follow the provided instructions to complete participant testing.
- Submit test results via the online RS&A Results Entry Portal.
- Receive your individual results in a PDF file sent via email.
- Get complete test cycle results using our final summary report.

UPCOMING TEST CYCLES & DATES

Test cycles and cycle dates are posted online.

1. Visit: www.RonSmithandAssociates/Testing
2. Click: Test Discipline
3. Click: Test Cycles & Dates

ONLINE PDF TEST SAMPLES

Did you know you can download a PDF sample document of each proficiency test we offer? Inside the document you will find:

- Sample instruction sheet.
- Sample images or photos of actual test materials.
- Samples of the individual, manufacturer, and summary reports.

1. Visit: www.RonSmithandAssociates/Testing
2. Click: Test Discipline
3. Click: Download a sample

WE ARE ACCREDITED

RS&A proficiency tests are accredited to ISO/IEC 17043 standards.



FORENSIC CONSULTING SERVICES



NEED A LITTLE HELP?

We Specialize in Providing Custom Solutions to Unique Forensic Problems.

As the demands of forensic units continue to escalate, innovation is the key, and **RS&A has developed more customized solutions for agencies than any other forensic identification service provider.** Our team of management experts can sit down face to face with your staff, or via on-line video if preferred, listen to your needs, and together develop a plan of action which is tailored to your situation no matter the size or complexity. RS&A specializes in providing customized solutions to unique forensic problems, regardless of the forensic discipline involved. Depending on the specific need, the solution can include either on-site or off-site components, or in some instances a combination of both.

Our team of forensic experts can evaluate your evidence, conduct any comparisons required, prepare your latent prints for automated searching, launch AFIS searches against your local database, if authorized, or even launch automated searches against the FBI Next Generation IAFIS, once approved by your state AFIS administrator. You will receive electronic media deliverables, including 1000 ppi images, electronic copies of all worksheets and final reports.

CONSULTING OPTION 1: ON-SITE (Your Facility)

Backlog Reduction & Technical Review Services are available in the following forensic disciplines:

- FIREARMS
- DRUG CHEMISTRY
- TOXICOLOGY/BAC
- SEROLOGY/DNA
- TOOLMARKS
- TRACE EVIDENCE
- LATENT PRINTS
- FOOTWEAR
- TIRE TRACKS

CONSULTING OPTION 2: YOU CAN SEND YOUR CASEWORK TO US

Submit your casework directly to one of our accredited laboratories. Remote services are available in the following forensic disciplines:

- LATENT PRINTS
- FOOTWEAR
- TIRE TRACKS



**RS&A COLLINSVILLE, MS
HEADQUARTERS LABORATORY
IS ACCREDITED TO
ISO/IEC 17025 STANDARDS**

BACKLOG KILLING YOU? BACKLOG REDUCTION **ELIMINATION**

We specialize in...

Sounds impossible, right? **IT IS NOT!** RS&A, over the last ten years, has developed and field tested a forensic business model which has worked extremely well in aiding pattern evidence units (latent print, firearms, footwear/tire track) to significantly reduce, and in some cases totally eliminate their backlog of casework. The concept is simple **IF** you have the business knowledge coupled with the forensic management experience necessary to understand the problem, design a solution and implement a plan.

Not all forensic units or laboratories have a backlog, and the key to our model is finding the best forensic scientists from these labs, coupling them with RS&A project managers, and deploying them as part of an "A-Team" for 8-10 days wherever they are needed most. By acquiring the short-term services of these fully credentialed forensic scientists who currently work in ISO accredited laboratories, RS&A is able to put together rotating teams of some of the most experienced forensic experts in our industry. They are able to use their comp time, vacation time, or the dreaded new category, "furlough time", to work on these short-term projects for RS&A. They can do so without having to have their own professional liability insurance coverage, because they are completely covered under the professional insurance package offered by RS&A.

Our record of success in past endeavors using this time-proven approach now enables RS&A to expand these backlog elimination services to other forensic disciplines. Drug chemistry, toxicology, serology, DNA and fire debris analysis, along with pattern evidence disciplines are a perfect fit for Ron Smith & Associates. **Want to talk? Call us today: 1-866-832-6772**



MULTI-LEVEL COMPETENCY TESTING for Latent Print Examiners

ONE SIZE DOES NOT FIT ALL!

Competency is not a stagnant, unchanging entity. All forensic specialists are expected to grow in skill level throughout their career and a "one-size fits all" competency testing concept simply does not meet the need of today's forensic community.

From screening potential trainees to ensuring that your more "senior" LPEs can still make the tough calls, and numerous career stages in between, RS&A has designed fair and thorough competency examinations to help answer your questions.



What makes these tests so special?

- * They are designed by Latent Print Examiners for Latent Print Examiners.
- * They are thoroughly reviewed by a panel of CLPEs prior to release.
- * The original latent print and known print images have been captured at 1000 ppi.
- * The hard copy photographs you will receive are all rendered at 1000 dpi on exceptionally high quality photo printers.
- * Digital versions may be available for some tests.

Level I - Pre-Employment Applicant Screening

Whether you are hiring a trainee or a more experienced examiner, you need to know if it is worth your valuable time, effort and money to bring them on board. They have to be able to discriminate between minute forms, shapes and details to succeed in this business. Visual acuity testing is remarkably effective for assessing these abilities and will provide critical information to assist in your hiring decision.

Ask about our new Visual Acuity Software

Level II - Pre-Supervised Casework Evaluation

There is a legitimate need for latent print unit managers to have their trainees externally evaluated prior to approving them for supervised casework. This outside assistance removes any subjectivity the trainer may naturally have after working closely with a trainee for an extended period of time. In addition, this would mitigate the potential for a trainee to advance prematurely in an effort to cope with a mounting backlog. RS&A can readily and reliably provide this valuable objective assistance because, quite frankly, we "don't have a dog in the race," – we just want you to be assured of your trainee's status!

SCAN QR CODE
for complete competency test details
and online buying options.



Level III - Case Working Latent Print Examiner

This test is designed with several applications in mind. First, the test can be used to evaluate an examiner at the end of their training program prior to being approved for independent casework. Second, this Level 3 module could augment your current proficiency testing program, particularly in the event of a discrepancy between your lab's results and those of the proficiency test provider. A third use could be to reevaluate an examiner – who has completed a special assignment (such as an overseas deployment) – prior to resuming casework. You may also opt to supplement your internal continuing education program if training funds are too scarce to justify conference attendance.

Level IV - Pre-IAI Certification

These tests are designed to determine if an examiner is prepared to successfully pass the International Association for Identification Certified Latent Print Examiner test. Studying and completing practice comparisons are keys to passing the certification test. These pre-tests are particularly advantageous for an examiner whose primary responsibility does not involve latent print comparisons or if it has been a while since the examiner has been able to attend a comparison intensive training course, like the five day IAI Latent Print Certification Test Preparation course, available through RS&A's training division.

Level V - Supervisory LPE Pre-Promotion Testing

This testing module is designed to help you find the right candidate to assume either a supervisory or technical lead position. There is a direct correlation between the overall quality of a latent print unit and the technical skills/abilities of their leader. Thus, it is mission-critical in today's forensic environment that you hire the examiner who will reliably lead your unit for years to come. Anything less won't cut it!

Level VI - Senior Latent Print Examiner Testing

There are many latent print examiners out there with 25+ years of experience. Their knowledge, skills and abilities are foundational for the continuing function of their latent print units, as they are essential in training future generations of examiners. They offer guidance and insight that can't be found in any textbook or training manual. However, it is well-known that one's eyesight and visual acuity may diminish over time, and this must be addressed. After all, you need to know that your most seasoned examiner can still make the proper decisions on those tough comparisons.

RS&A QUALITY MANAGEMENT SERVICES

CONTRACT QUALITY MANAGEMENT

Write Documents
Implement Policies & Procedures
Perform a Self-evaluation

**Preparing for an accreditation assessment
is just that easy...OR IS IT?**

Accredited forensic laboratories are required to appoint a member of staff as quality manager (however named). This individual is responsible for ensuring that the management system related to quality is implemented and maintained. There are times when agencies need temporary assistance with this important position due to an unexpected vacancy, new or inexperienced quality manager, or a lack of resources.

You can now take advantage of Ron Smith & Associates' quality management knowledge and experience to benefit your lab. Contract with RS&A and let us manage quality in your agency. **Why contract with an RS&A Quality Manager?**

We have experienced quality management personnel.

**We have successfully worked with many agencies
to achieve accreditation.**

We have experience with ISO/IEC 17020, 17025 and 17043.

**We can help your organization achieve
this benchmark of excellence.**

**We can help you with any aspect of quality
management; no job is too big or too small.**

It IS easy with RS&A.

EASY

**RS&A offers a full range of Quality Management Services
in addition to Contract Quality Management:**

GAP ANALYSIS

If your agency is preparing for accreditation, you want to know where you stand. Are there any gaps? Maybe your agency is transitioning to a different set of standards, or maybe your agency is already accredited and you plan to add new disciplines to existing forensic services. In either case, it's a good idea to perform a gap analysis.

A good gap analysis will give your laboratory an objective indicator as to the accuracy of the documents in your quality management system. A good gap analysis can prevent wasted resources. No agency can afford to spend time and energy implementing policies and procedures only to realize later that those policies and procedures didn't address all of the requirements.

INTERNAL AUDITS

Many forensic laboratories have seen the benefit of outsourcing their internal audits. Audit functions can be completed by outsourced staff under the supervision of someone in your agency, such as the quality manager. In this manner, your agency gets the benefit of outsourcing the internal audit but maintains control of the process. Any findings of nonconformance, observations, or recommendations are documented and presented to your agency, but the final decision of nonconformance, for example, is made by you.



**Our Quality Management
staff is available to
discuss the details of
any services offered or
help you determine the
services that will best
meet your needs. Every
agency is unique.**

Call RS&A. Our goal is to see your organization succeed. 16

RON SMITH & ASSOCIATES, INC. FOOTWEAR SERVICES

In times of budgetary hardships we all look for ways to stretch the shrinking dollar. When faced with losing an experienced examiner and having to hire or train someone new, there are some hard questions that you should be asking:

What are the chances of hiring an IAI Certified Footwear Examiner (CFWE)?

Does your caseload justify the costs associated with training someone to competency and ultimately certification?

FOOTWEAR CASEWORK SERVICES:

Is your agency under a hiring freeze or in need of experienced full time or part time help? RS&A can be the short term or long term solution you need.

- All cases are worked by an IAI Certified Footwear Examiner (CFWE)
- All cases are technically and administratively reviewed by a CFWE
- All conclusions are verified by a CFWE
- All reports will be written by a CFWE
- All case documentation and work product will be provided in the deliverables
- With RS&A, you get a team of CFWEs, not an individual

FOOTWEAR TECHNICAL REVIEW SERVICES:

Is your agency short the necessary personnel to conduct technical/verification reviews? Maybe one of your examiners is on an extended leave and your agency is in need of temporary assistance with technical reviews.

- All Technical / Verification Reviews are completed by IAI Certified Footwear Examiners (CFWE)
- All Technical Reviews are completed based on your agency's procedures

ACCREDITED TO ISO/IEC 17025

RS&A is the only private forensic laboratory offering footwear examination that is accredited to ISO/IEC 17025 standards.

RS&A has the accredited facilities, the framework and the personnel to handle all of your footwear examination needs.

1-866-832-6772

www.RonSmithandAssociates.com

LOCATION & CONTACT INFORMATION

Headquarters Laboratory

Street Address: 9335 Highway 19 N

Mailing Address: P.O. Box 670

Collinsville, MS 39325

Toll Free: 1-866-832-6772

Phone: 601-626-1100

Fax: 601-626-1122

COMPANY WEBSITE



Visit us online at:

www.RonSmithandAssociates.com

DIVISION CONTACTS

Training Division

training@ronsmithandassociates.com

Consulting Division

consulting@ronsmithandassociates.com

Testing Division

testing@ronsmithandassociates.com

Quality Management Division

quality@ronsmithandassociates.com



JOIN OUR EMAIL LIST

www.RonSmithandAssociates.com/Email

SOCIAL MEDIA LINKS



www.facebook.com/RonSmithandAssociatesInc