



Ron Smith & Associates, Inc.

Testing Division

www.RonSmithandAssociates.com | testing@ronsmithandassociates.com

Summary Report

CS Presumptive Blood Testing Proficiency Test #21600PBT

Issued: June 9, 2021

On April 5, 2021, Ron Smith and Associates, Inc. (RS&A) shipped the CS Presumptive Blood Testing Proficiency Test #21600PBT. Participants were required to submit their responses no later than May 17, 2021 in order for them to be included in this summary report.

A total of 72 tests were ordered and shipped, with 54 participant returning their responses. **This summary report is based on 216 individual responses (54 participants returning 4 responses each).** The test included four items for presumptive blood testing.

The results presented in this report reflect whether or not the participants' submitted results agree or disagree with the assigned values garnered from pre-distribution testing and outlined in *The Manufacturer's Report* (Appendix 1). The primary purpose of a Summary Report is to provide an overall documentation of all the submitted responses. It is RS&A's intention to go a step further by providing more meaningful statistical results through analyzing the submitted responses in relation to the demographics obtained from each of the analysts participating in this proficiency test. All results and statistics for this test will be outlined through graphs and charts found in the remainder of this report.

Prior to distribution of this test, all the expected responses were determined, by internal and external consensus, to be either "(+) Positive for Blood" or "(-) Negative for Blood"; however, we are aware that some agencies may allow for a conclusion of "Inconclusive" in their casework. In designing this Proficiency Test, there was no intention to force a participant to render a conclusion which goes beyond their considered opinion. To satisfy this option, participants were allowed to enter "Inconclusive" as a response. Due to the fact that a participant's "Inconclusive" response does not meet the assigned values, it will appear as an inconsistent response in this summary report and be incorporated as such in the statistical analysis. It will be up to each agency to decide if the participant's "Inconclusive" response qualifies as being acceptable under their policies and procedures.

RS&A strives to maintain the confidentiality of all its clients and participants. All results are obtained and published using randomly generated test codes. RS&A will not release the identity of any participant without the written consent of the participant and/or the agency involved.

For any questions or further information, please contact our Proficiency Testing Coordinator by emailing testing@ronsmithandassociates.com or by calling toll free at 1-866-832-6772.

Appendix 1

Test Manufacturer's Information **CS Presumptive Blood Testing Proficiency Test #21600PBT**

This proficiency test consisted of four items labeled as Item #1 (Piece of Cardboard), Item #2 (Piece of Gray Shirt), Item #3 (Piece of Black Pants) and Item #4 (Piece of Red Shirt). These items were similar to those normally encountered in crime scene processing. The participant was required to process the items for the presumptive presence or absence of blood. The assigned values are as follows:

Item #	Assigned Value
Item #1 (Cardboard)	Presumptive Negative (-) for Blood
Item #2 (Gray Shirt)	Presumptive Negative (-) for Blood
Item #3 (Black Pants)	Presumptive Positive (+) for Blood
Item #4 (Red Shirt)	Presumptive Positive (+) for Blood

The assigned values were determined through the ground truth information and verified through unanimous agreement during pre-distribution testing.

Known Substance used:

Item 1: Non-Blood, **Item 2:** Non-blood, **Item 3:** Human Blood, **Item 4:** Human blood

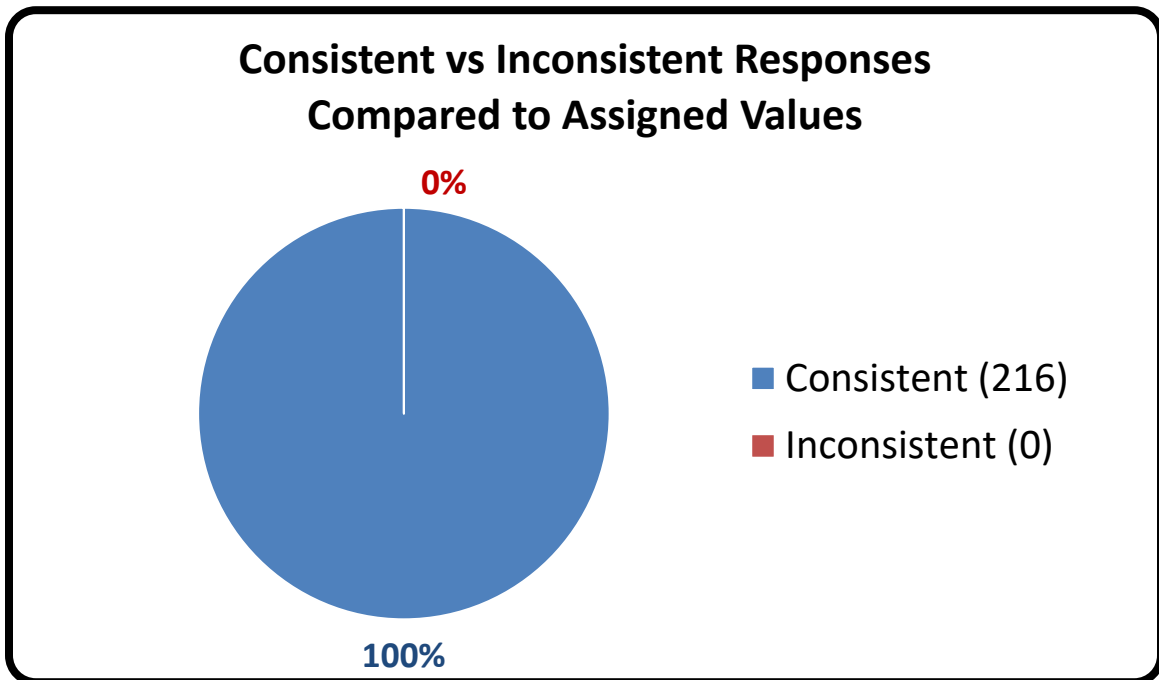
Individual reports will be provided to participants by mid-June 2021. The final summary report for this test will be posted on the Ron Smith and Associates website by late June 2021 using the following link:
www.ronsmithandassociates.com/proficiency/crimesceneprocessing.html

It is recommended to postpone evaluating an individual's performance until after you have received the statistical averages contained in the summary report.

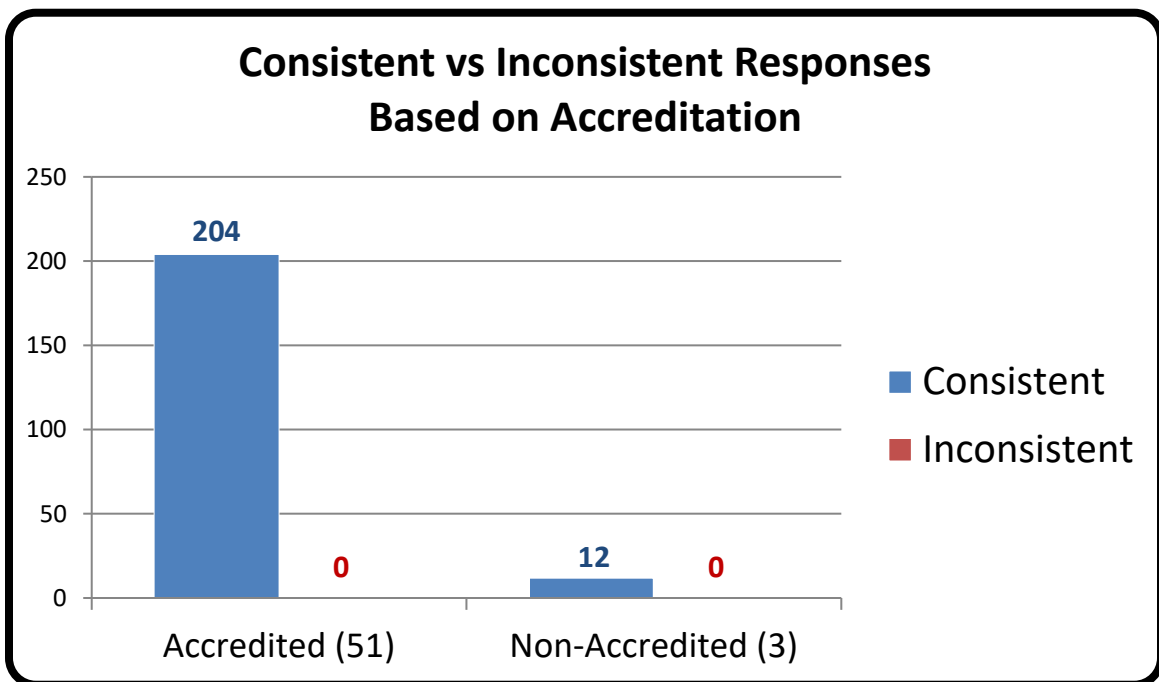
For any questions or further information, contact the Proficiency Testing Coordinator by emailing testing@ronsmithandassociates.com or call toll free at 1-866-832-6772.

Authorized by: Ron Smith, President
Issue Date: June 5, 2021

Appendix 2



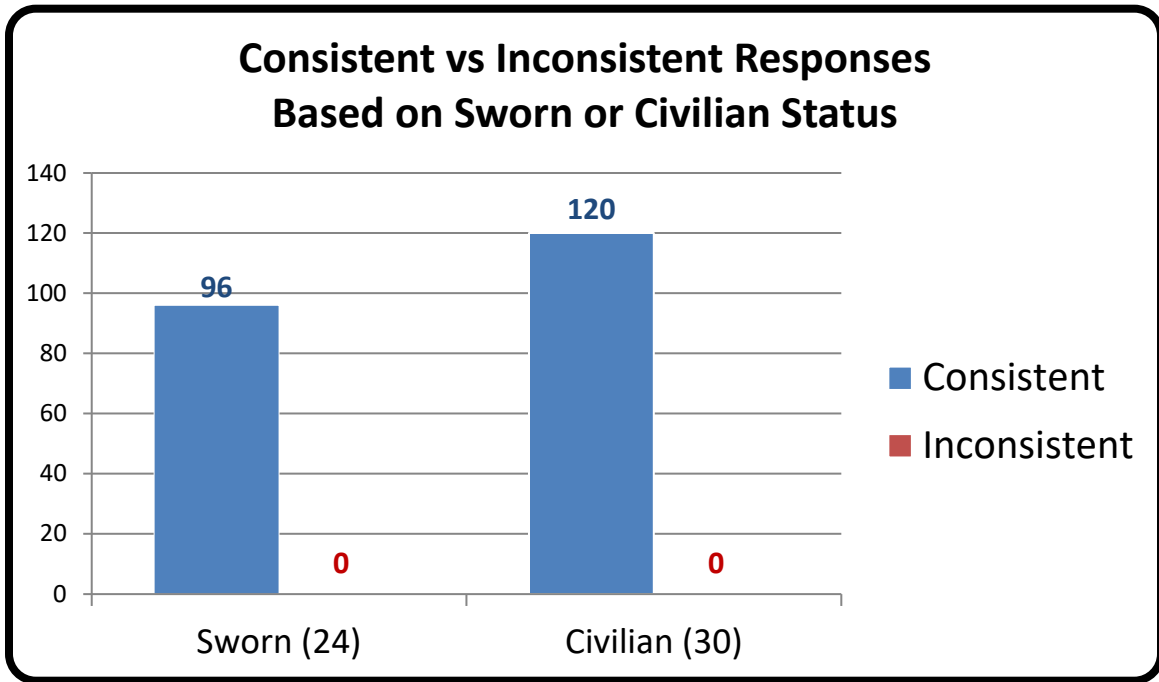
Appendix 3



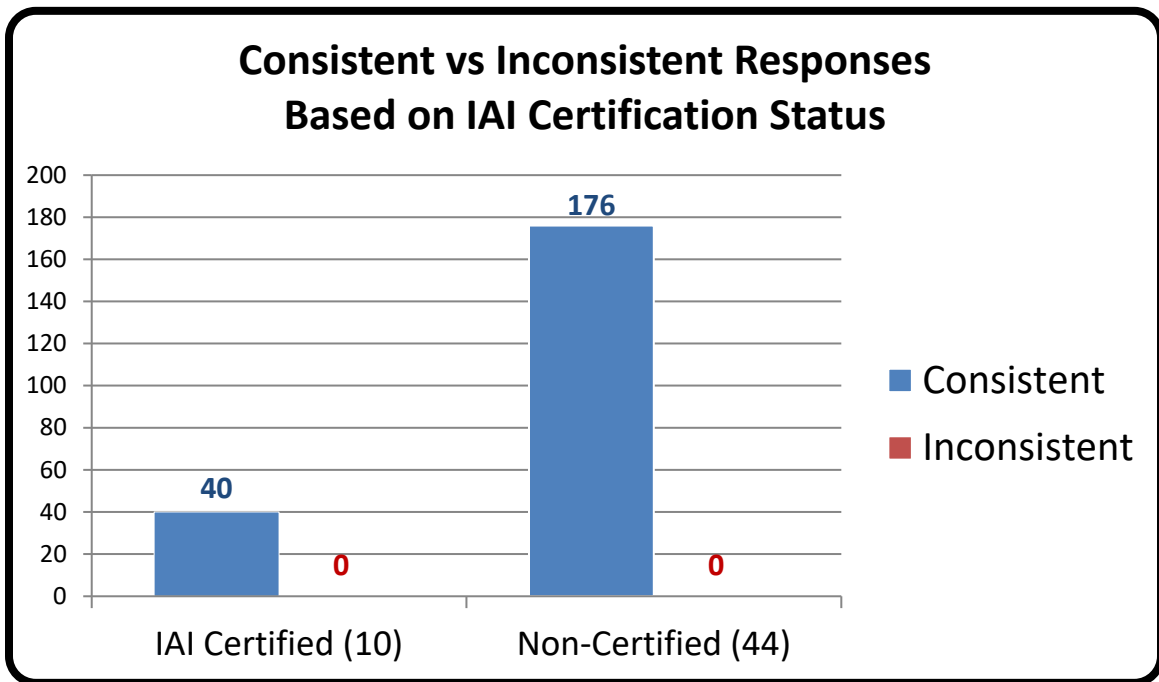
*Numerical values shown are based on 54 participant submissions, each with 4 responses, equaling 216 total responses.

*For further information, please read *Manufacturer's Additional Observations* on the final page of this report.

Appendix 4



Appendix 5

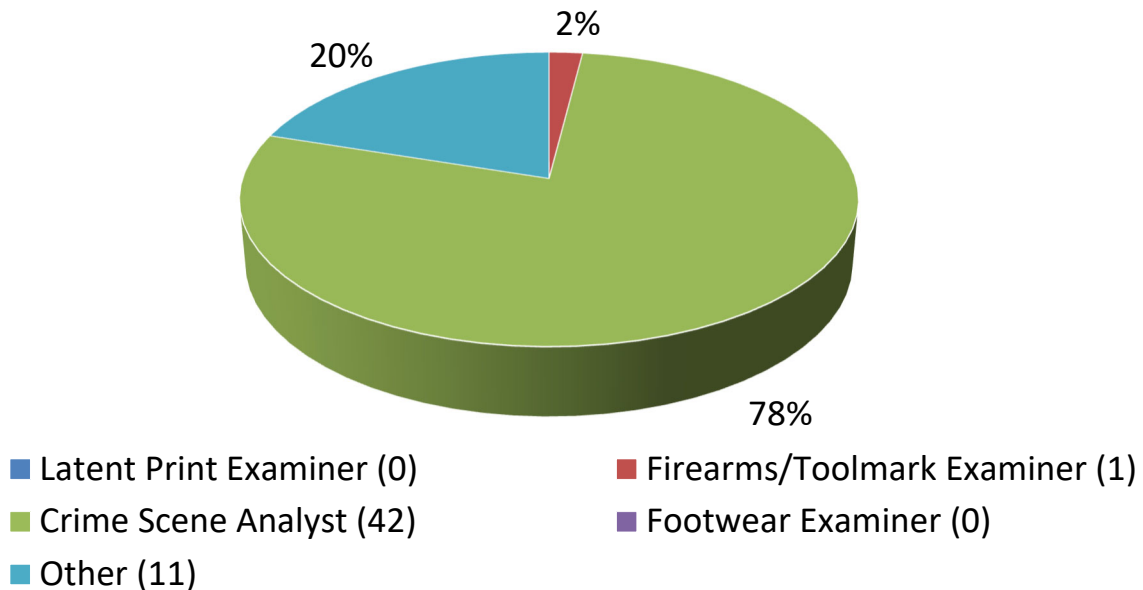


*Numerical values shown are based on **54 participant submissions, each with 4 responses, equaling 216 total responses.**

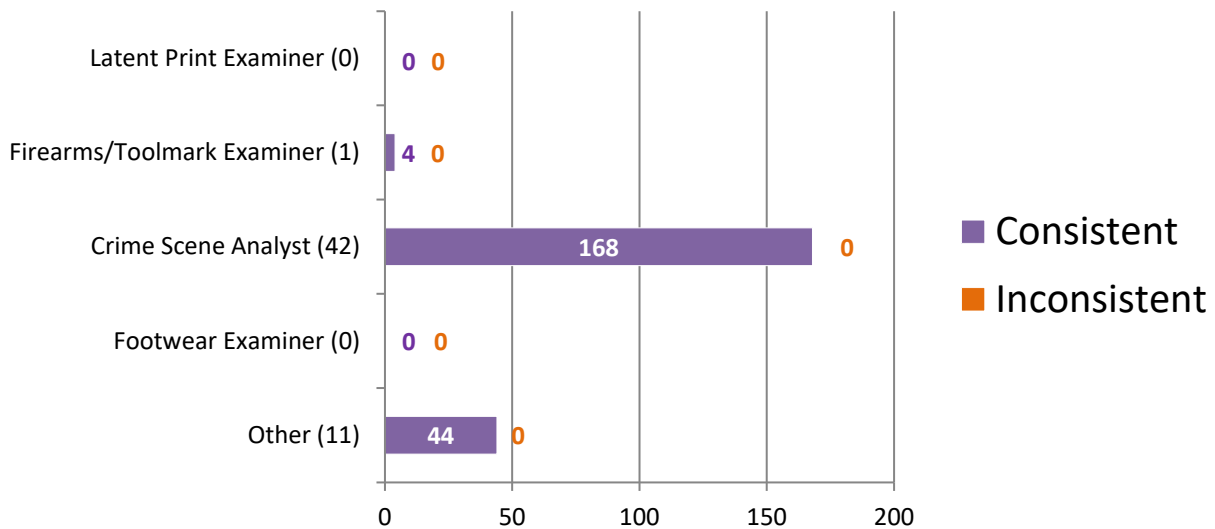
*For further information, please read *Manufacturer's Additional Observations* on the final page of this report.

Appendix 6

Percentage of Participants Based on Primary Job Position



Consistent vs Inconsistent Responses Based on Primary Job Position

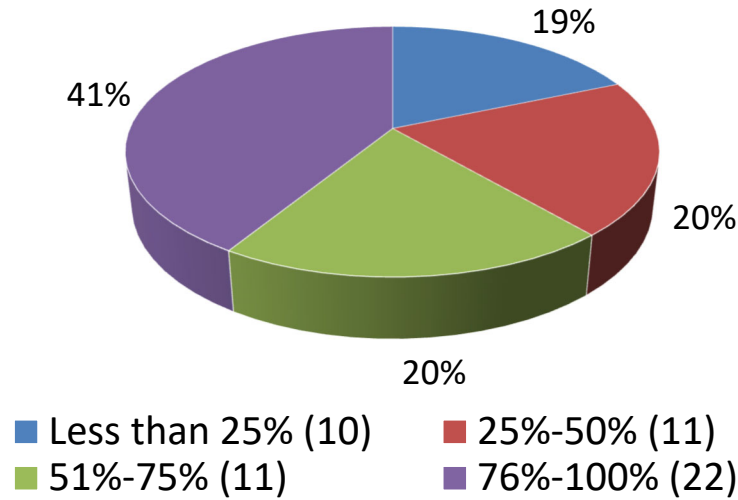


*Numerical values shown are based on **54 participant submissions, each with 4 responses, equaling 216 total responses.**

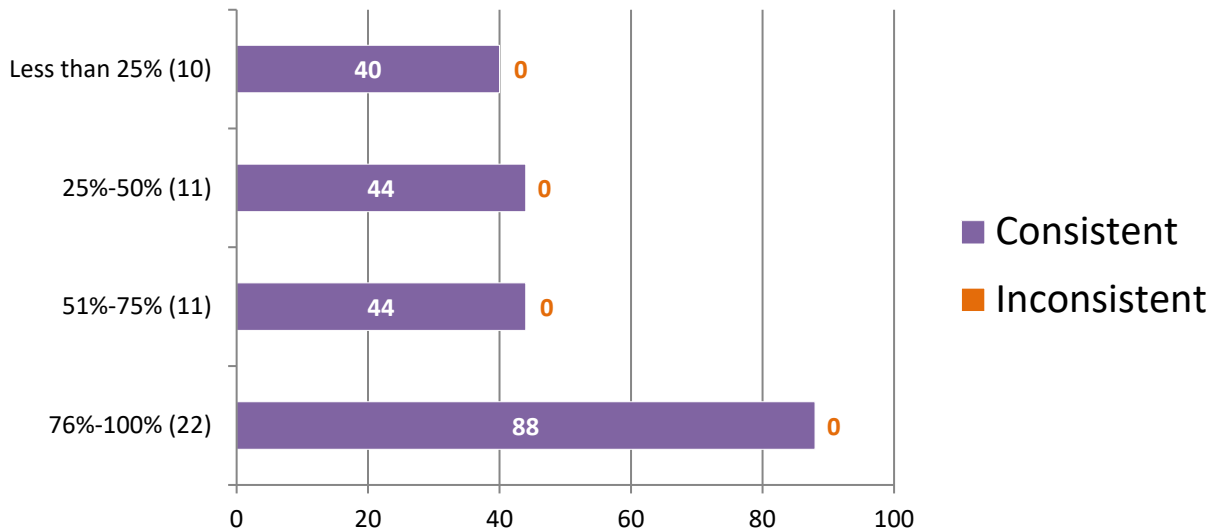
*For further information, please read *Manufacturer's Additional Observations* on the final page of this report.

Appendix 7

Percentage of Participants Based on Time Devoted to Processing Crime Scenes



Consistent vs Inconsistent Responses Based on Time Devoted to Processing Crime Scenes

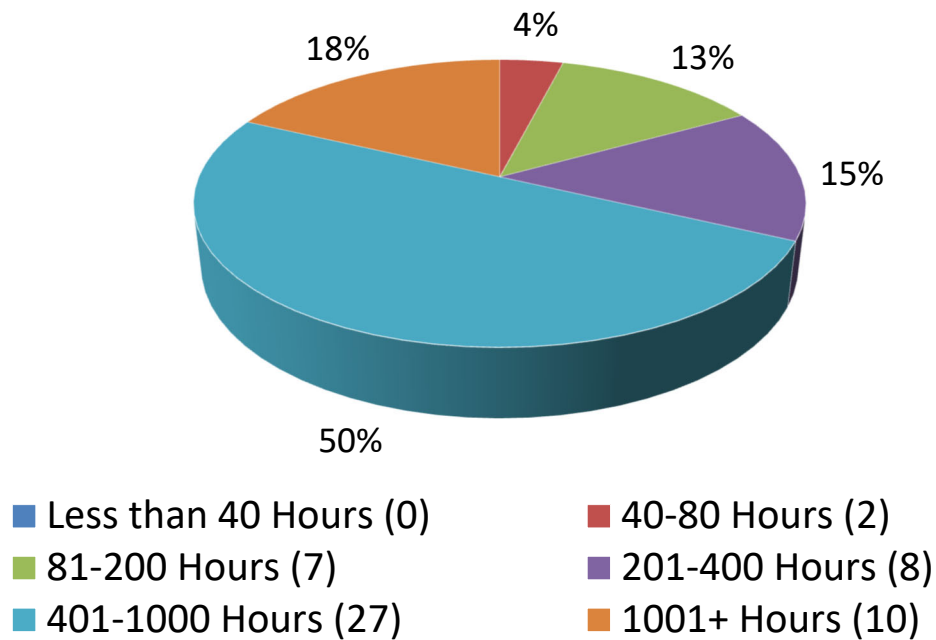


*Numerical values shown are based on 54 participant submissions, each with 4 responses, equaling 216 total responses.

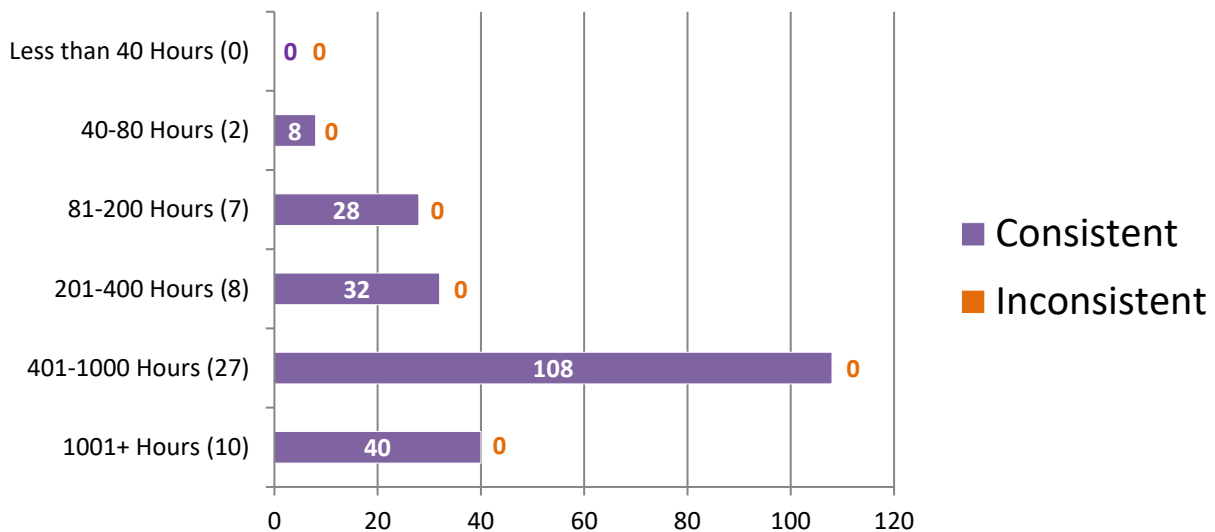
*For further information, please read *Manufacturer's Additional Observations* on the final page of this report.

Appendix 8

Percentage of Participants Based on Hours of Formal Crime Scene Training Completed



Consistent vs Inconsistent Responses Based on Hours of Formal Crime Scene Training Completed

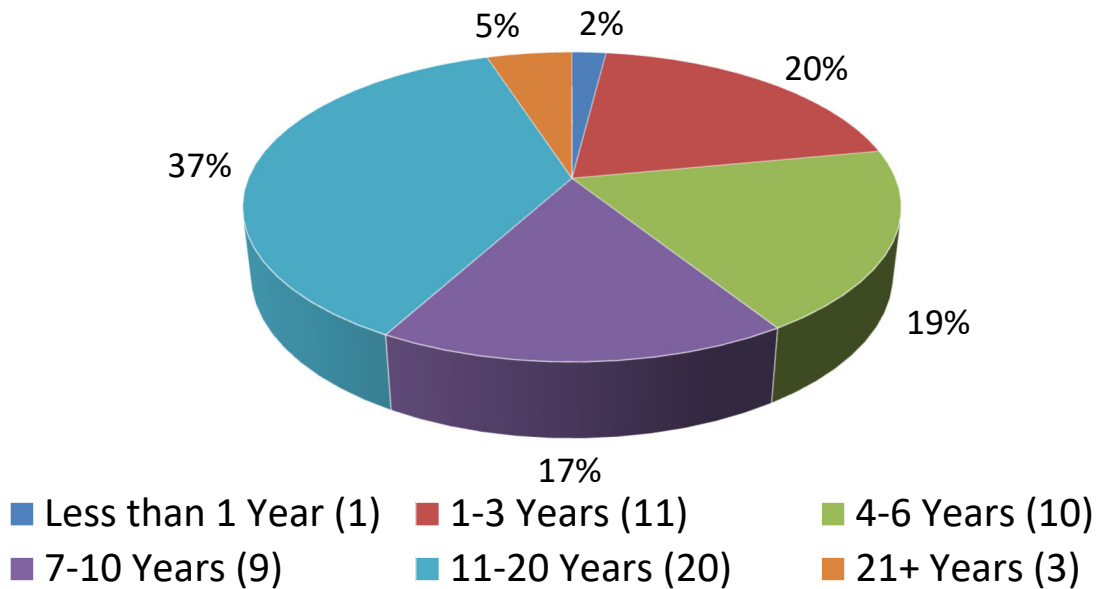


*Numerical values shown are based on **54 participant submissions, each with 4 responses, equaling 216 total responses.**

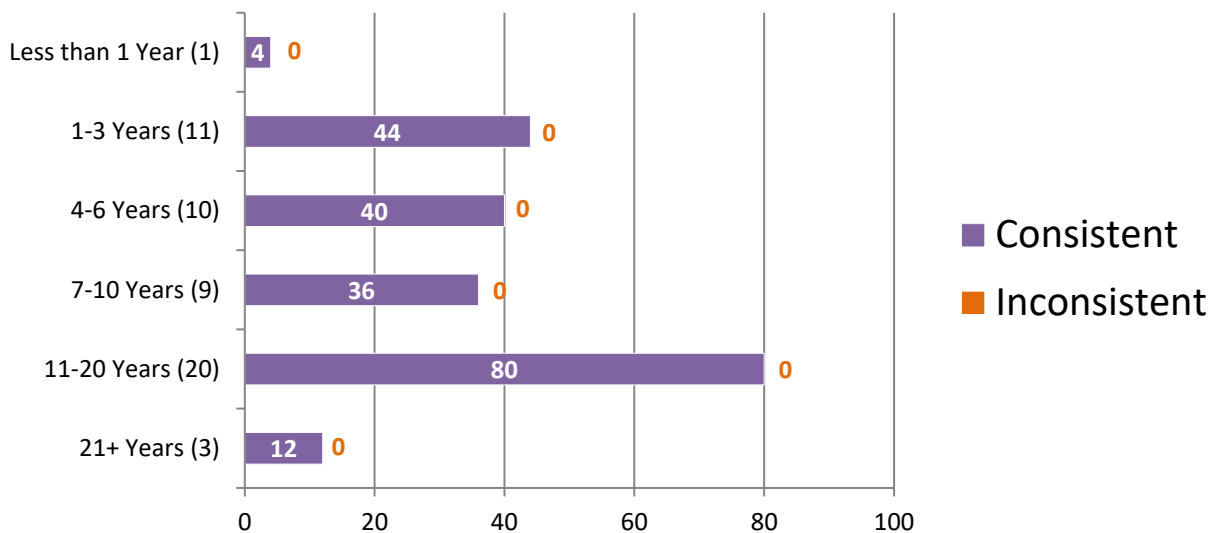
*For further information, please read **Manufacturer's Additional Observations** on the final page of this report.

Appendix 9

Percentage of Participants Based on Years of Experience in Crime Scene Processing



Consistent vs Inconsistent Responses Based on Years of Experience in Crime Scene Processing

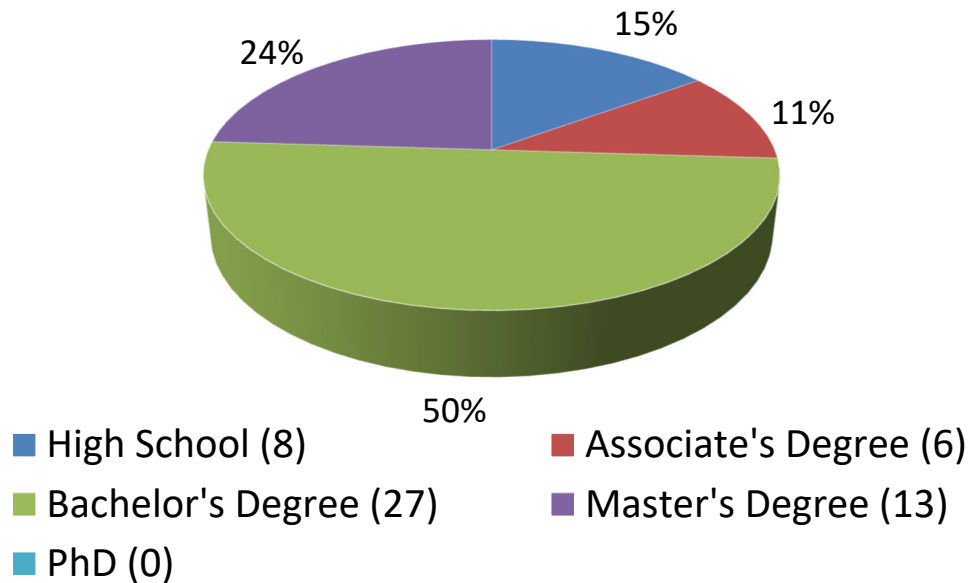


*Numerical values shown are based on **54 participant submissions, each with 4 responses, equaling 216 total responses.**

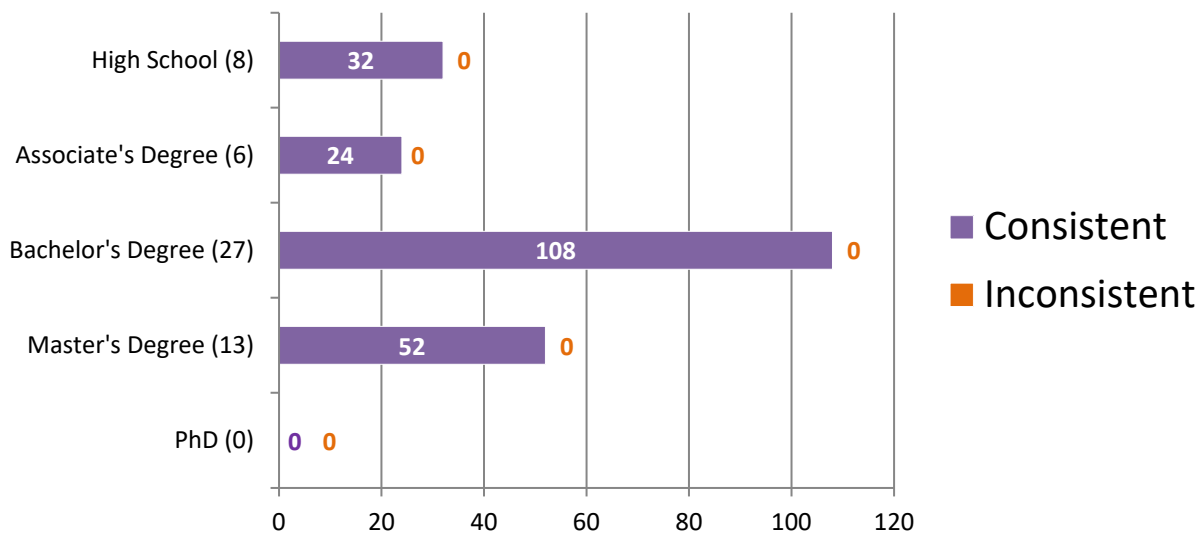
*For further information, please read **Manufacturer's Additional Observations** on the final page of this report.

Appendix 10

Percentage of Participants Based on Highest Level of Education Completed



Consistent vs Inconsistent Responses Based on Highest Level of Education Completed

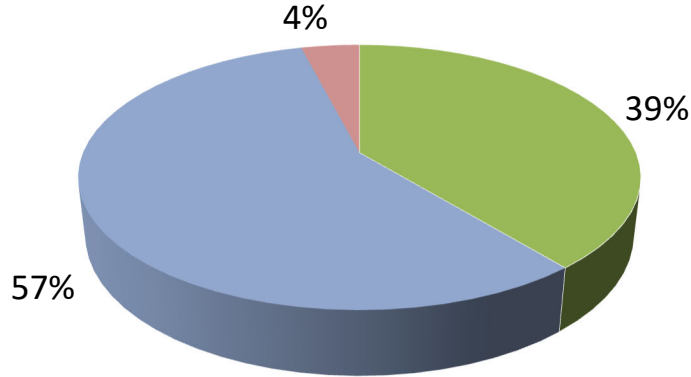


*Numerical values shown are based on **54 participant submissions, each with 4 responses, equaling 216 total responses.**

*For further information, please read **Manufacturer's Additional Observations** on the final page of this report.

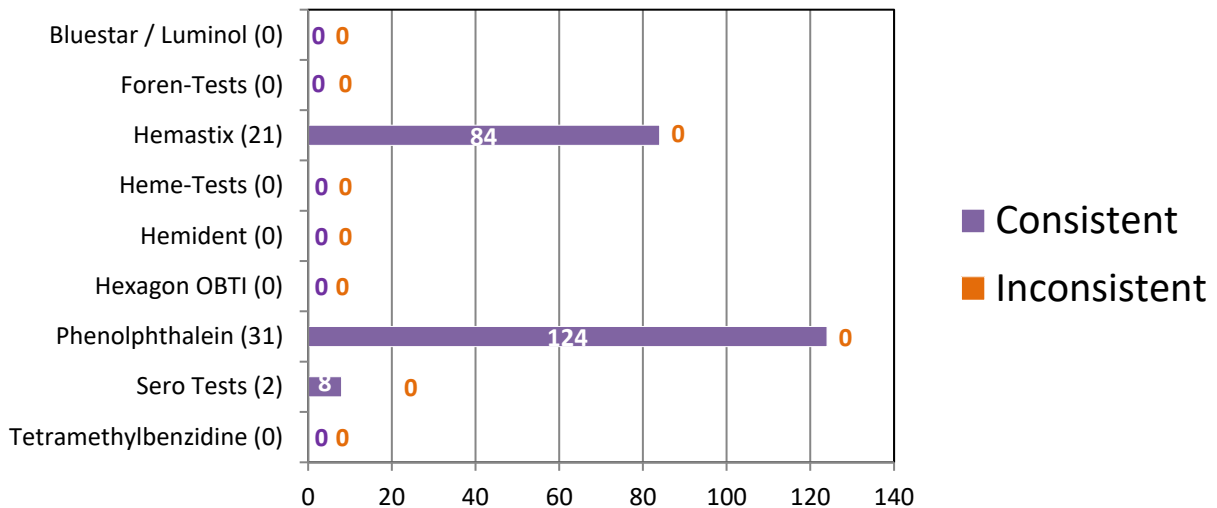
Appendix 11

Percentage of Participants Based on Presumptive Method Used



- | | |
|---|--|
| ■ Blue Star / Luminol (0) | ■ Foren-Tests (0) |
| ■ Hemastix (21) | ■ Heme-Tests (0) |
| ■ Hemident (0) | ■ Hexagon OBTI (0) |
| ■ Phenolphthalein (31) | ■ Sero-Tests (2) |
| ■ Tetramethylbenzidine (0) | |

Consistent vs Inconsistent Responses Based on Presumptive Method Used

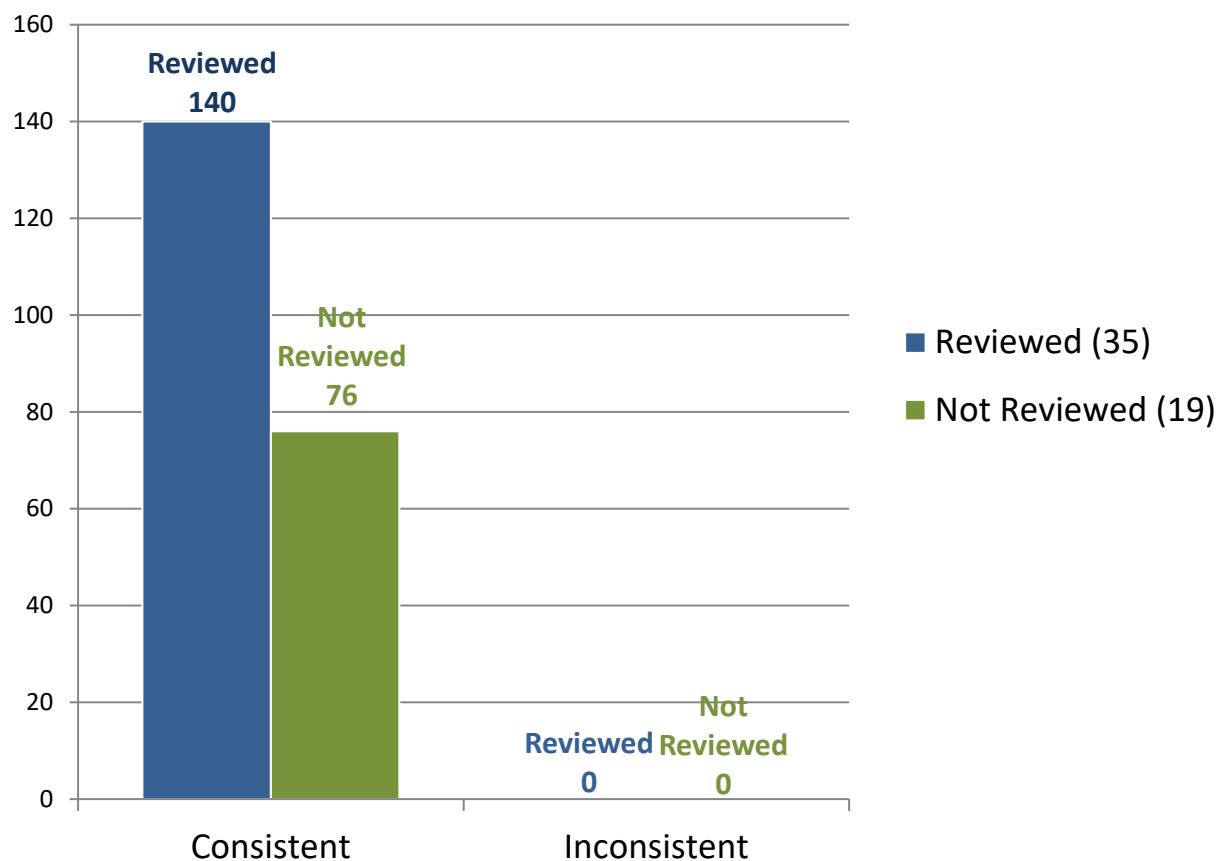


*Numerical values shown are based on **54 participant submissions, each with 4 responses, equaling 216 total responses.**

*For further information, please read **Manufacturer's Additional Observations** on the final page of this report.

Appendix 12

Consistent vs Inconsistent Responses Based on Review of Original Conclusions by another Analyst Prior to Submission



*Numerical values shown are based on **54 participant submissions, each with 4 responses, equaling 216 total responses.**

*For further information, please read **Manufacturer's Additional Observations** on the final page of this report.

Appendix 13

Participant Responses Listed by Test Code

Item #	Item #1	Item #2	Item #3	Item #4
Assigned Values	Presumptive (-) Negative for Blood	Presumptive (-) Negative for Blood	Presumptive (+) Positive for Blood	Presumptive (+) Positive for Blood
1456W21600PBT	Presumptive (-) Negative for Blood	Presumptive (-) Negative for Blood	Presumptive (+) Positive for Blood	Presumptive (+) Positive for Blood
7474O21600PBT	Presumptive (-) Negative for Blood	Presumptive (-) Negative for Blood	Presumptive (+) Positive for Blood	Presumptive (+) Positive for Blood
9002M21600PBT	Presumptive (-) Negative for Blood	Presumptive (-) Negative for Blood	Presumptive (+) Positive for Blood	Presumptive (+) Positive for Blood
4557X21600PBT	Presumptive (-) Negative for Blood	Presumptive (-) Negative for Blood	Presumptive (+) Positive for Blood	Presumptive (+) Positive for Blood
9947G21600PBT	Presumptive (-) Negative for Blood	Presumptive (-) Negative for Blood	Presumptive (+) Positive for Blood	Presumptive (+) Positive for Blood
1716V21600PBT	Presumptive (-) Negative for Blood	Presumptive (-) Negative for Blood	Presumptive (+) Positive for Blood	Presumptive (+) Positive for Blood
4939K21600PBT	Presumptive (-) Negative for Blood	Presumptive (-) Negative for Blood	Presumptive (+) Positive for Blood	Presumptive (+) Positive for Blood
5043M21600PBT	Presumptive (-) Negative for Blood	Presumptive (-) Negative for Blood	Presumptive (+) Positive for Blood	Presumptive (+) Positive for Blood
6045U21600PBT	Presumptive (-) Negative for Blood	Presumptive (-) Negative for Blood	Presumptive (+) Positive for Blood	Presumptive (+) Positive for Blood
676F21600PBT	Presumptive (-) Negative for Blood	Presumptive (-) Negative for Blood	Presumptive (+) Positive for Blood	Presumptive (+) Positive for Blood
5945O21600PBT	Presumptive (-) Negative for Blood	Presumptive (-) Negative for Blood	Presumptive (+) Positive for Blood	Presumptive (+) Positive for Blood
6850R21600PBT	Presumptive (-) Negative for Blood	Presumptive (-) Negative for Blood	Presumptive (+) Positive for Blood	Presumptive (+) Positive for Blood
3936A21600PBT	Presumptive (-) Negative for Blood	Presumptive (-) Negative for Blood	Presumptive (+) Positive for Blood	Presumptive (+) Positive for Blood

Test Code

Test Code

9163X21600PBT	Presumptive (-) Negative for Blood	Presumptive (-) Negative for Blood	Presumptive (+) Positive for Blood	Presumptive (+) Positive for Blood
1735Q21600PBT	Presumptive (-) Negative for Blood	Presumptive (-) Negative for Blood	Presumptive (+) Positive for Blood	Presumptive (+) Positive for Blood
1873G21600PBT	Presumptive (-) Negative for Blood	Presumptive (-) Negative for Blood	Presumptive (+) Positive for Blood	Presumptive (+) Positive for Blood
5854O21600PBT	Presumptive (-) Negative for Blood	Presumptive (-) Negative for Blood	Presumptive (+) Positive for Blood	Presumptive (+) Positive for Blood
54Y21600PBT	Presumptive (-) Negative for Blood	Presumptive (-) Negative for Blood	Presumptive (+) Positive for Blood	Presumptive (+) Positive for Blood
4570V21600PBT	Presumptive (-) Negative for Blood	Presumptive (-) Negative for Blood	Presumptive (+) Positive for Blood	Presumptive (+) Positive for Blood
6173I21600PBT	Presumptive (-) Negative for Blood	Presumptive (-) Negative for Blood	Presumptive (+) Positive for Blood	Presumptive (+) Positive for Blood
1901X21600PBT	Presumptive (-) Negative for Blood	Presumptive (-) Negative for Blood	Presumptive (+) Positive for Blood	Presumptive (+) Positive for Blood
2142Q21600PBT	Presumptive (-) Negative for Blood	Presumptive (-) Negative for Blood	Presumptive (+) Positive for Blood	Presumptive (+) Positive for Blood
2331F21600PBT	Presumptive (-) Negative for Blood	Presumptive (-) Negative for Blood	Presumptive (+) Positive for Blood	Presumptive (+) Positive for Blood
242Y21600PBT	Presumptive (-) Negative for Blood	Presumptive (-) Negative for Blood	Presumptive (+) Positive for Blood	Presumptive (+) Positive for Blood
2931K21600PBT	Presumptive (-) Negative for Blood	Presumptive (-) Negative for Blood	Presumptive (+) Positive for Blood	Presumptive (+) Positive for Blood
3371U21600PBT	Presumptive (-) Negative for Blood	Presumptive (-) Negative for Blood	Presumptive (+) Positive for Blood	Presumptive (+) Positive for Blood
3946B21600PBT	Presumptive (-) Negative for Blood	Presumptive (-) Negative for Blood	Presumptive (+) Positive for Blood	Presumptive (+) Positive for Blood
3977O21600PBT	Presumptive (-) Negative for Blood	Presumptive (-) Negative for Blood	Presumptive (+) Positive for Blood	Presumptive (+) Positive for Blood
4103E21600PBT	Presumptive (-) Negative for Blood	Presumptive (-) Negative for Blood	Presumptive (+) Positive for Blood	Presumptive (+) Positive for Blood

Test Code

4655E21600PBT	Presumptive (-) Negative for Blood	Presumptive (-) Negative for Blood	Presumptive (+) Positive for Blood	Presumptive (+) Positive for Blood
6472D21600PBT	Presumptive (-) Negative for Blood	Presumptive (-) Negative for Blood	Presumptive (+) Positive for Blood	Presumptive (+) Positive for Blood
6617P21600PBT	Presumptive (-) Negative for Blood	Presumptive (-) Negative for Blood	Presumptive (+) Positive for Blood	Presumptive (+) Positive for Blood
8267G21600PBT	Presumptive (-) Negative for Blood	Presumptive (-) Negative for Blood	Presumptive (+) Positive for Blood	Presumptive (+) Positive for Blood
9385L21600PBT	Presumptive (-) Negative for Blood	Presumptive (-) Negative for Blood	Presumptive (+) Positive for Blood	Presumptive (+) Positive for Blood
4161M21600PBT	Presumptive (-) Negative for Blood	Presumptive (-) Negative for Blood	Presumptive (+) Positive for Blood	Presumptive (+) Positive for Blood
2798U21600PBT	Presumptive (-) Negative for Blood	Presumptive (-) Negative for Blood	Presumptive (+) Positive for Blood	Presumptive (+) Positive for Blood
4684O21600PBT	Presumptive (-) Negative for Blood	Presumptive (-) Negative for Blood	Presumptive (+) Positive for Blood	Presumptive (+) Positive for Blood
8728E21600PBT	Presumptive (-) Negative for Blood	Presumptive (-) Negative for Blood	Presumptive (+) Positive for Blood	Presumptive (+) Positive for Blood
9025X21600PBT	Presumptive (-) Negative for Blood	Presumptive (-) Negative for Blood	Presumptive (+) Positive for Blood	Presumptive (+) Positive for Blood
9439U21600PBT	Presumptive (-) Negative for Blood	Presumptive (-) Negative for Blood	Presumptive (+) Positive for Blood	Presumptive (+) Positive for Blood
1285N21600PBT	Presumptive (-) Negative for Blood	Presumptive (-) Negative for Blood	Presumptive (+) Positive for Blood	Presumptive (+) Positive for Blood
1357J21600PBT	Presumptive (-) Negative for Blood	Presumptive (-) Negative for Blood	Presumptive (+) Positive for Blood	Presumptive (+) Positive for Blood
2336C21600PBT	Presumptive (-) Negative for Blood	Presumptive (-) Negative for Blood	Presumptive (+) Positive for Blood	Presumptive (+) Positive for Blood
4530H21600PBT	Presumptive (-) Negative for Blood	Presumptive (-) Negative for Blood	Presumptive (+) Positive for Blood	Presumptive (+) Positive for Blood
4909R21600PBT	Presumptive (-) Negative for Blood	Presumptive (-) Negative for Blood	Presumptive (+) Positive for Blood	Presumptive (+) Positive for Blood

Test Code	7067H21600PBT	Presumptive (-) Negative for Blood	Presumptive (-) Negative for Blood	Presumptive (+) Positive for Blood	Presumptive (+) Positive for Blood
	9073R21600PBT	Presumptive (-) Negative for Blood	Presumptive (-) Negative for Blood	Presumptive (+) Positive for Blood	Presumptive (+) Positive for Blood
	9359I21600PBT	Presumptive (-) Negative for Blood	Presumptive (-) Negative for Blood	Presumptive (+) Positive for Blood	Presumptive (+) Positive for Blood
	2189S21600PBT	Presumptive (-) Negative for Blood	Presumptive (-) Negative for Blood	Presumptive (+) Positive for Blood	Presumptive (+) Positive for Blood
	9899A21600PBT	Presumptive (-) Negative for Blood	Presumptive (-) Negative for Blood	Presumptive (+) Positive for Blood	Presumptive (+) Positive for Blood
	9241G21600PBT	Presumptive (-) Negative for Blood	Presumptive (-) Negative for Blood	Presumptive (+) Positive for Blood	Presumptive (+) Positive for Blood
	2384Q21600PBT	Presumptive (-) Negative for Blood	Presumptive (-) Negative for Blood	Presumptive (+) Positive for Blood	Presumptive (+) Positive for Blood
	5945L21600PBT	Presumptive (-) Negative for Blood	Presumptive (-) Negative for Blood	Presumptive (+) Positive for Blood	Presumptive (+) Positive for Blood
	5991K21600PBT	Presumptive (-) Negative for Blood	Presumptive (-) Negative for Blood	Presumptive (+) Positive for Blood	Presumptive (+) Positive for Blood

Totals

Item #	Item #1	Item #2	Item #3	Item #4
Assigned Values	Presumptive (-) Negative for Blood	Presumptive (-) Negative for Blood	Presumptive (+) Positive for Blood	Presumptive (+) Positive for Blood
Consistent Responses	54	54	54	54
Inconsistent Responses	0	0	0	0
Percentage of Consistent Responses	100%	100%	100%	100%

Participant's Additional Comments

Test ID	Comments
7474O21600PBT	In items 3 and 4, the HemaTrace ABA card test was applied, obtaining "Positive for human blood" results. This laboratory applies the confirmatory test for human blood.
4557X21600PBT	Only four items inside testing box. No item #5 in box, no item #5 indicated in test packet or test worksheets. Item #5 is not applicable to these results.
6173I21600PBT	Our agency used Hexagon OBTI for our presumptive testing.
1901X21600PBT	Wore PPE (mask and gloves and changed those items between each test). Conducted positive and negative controls. Tested each item with Phe.
2142Q21600PBT	A positive and negative control test was completed prior to the exam to show the chemicals were working correctly.
2331F21600PBT	Utilized personal protection equipment including protective gloves, eyewear, and mouth and nose covering prior to opening each item. Gloves were changed between testing of each item. Conducted positive and negative controls before testing of these items and at the conclusion of the testing. Used swabs on each item collect a sample from the object in the given envelope.
242Y21600PBT	I used control samples to test Step 1 and Step 2 solutions for positive and negative reactions. Before testing each sample I wore gloves and a mask. The gloves were changed before each field test. A clean swab was used on each of the four samples. Step 1 and Step 2 were applied to each swab and the results were noted.
2931K21600PBT	Performed control tests on chemicals, wore PPE and changed gloves between each item of evidence tested. Used distilled water and Phenolphthalein to test a swabbed sample of each item.
3371U21600PBT	I did positive and negative tests prior to using phenolphthalein. It was confirmed that it was functioning correctly.
3946B21600PBT	Dawned PPE (Mask and Gloves), conducted positive and negative controls, utilized a sterile swab moistened with distilled water to swab test Item 1, then used steps 1 then 2 of Phenolphthalein. These same steps were followed for tests Item 2 through 4.
3977O21600PBT	I conducted positive and negative control tests prior to testing the items. I moistened the swabs with distilled water and swabbed each stain. I utilized Phe (step 1 and step 2). I wore gloves and changed them between tests.
4103E21600PBT	I did a positive and negative control test prior to using the phenolphthalein.
4655E21600PBT	Positive/negative control was done prior to testing and agents was reacting appropriately
6472D21600PBT	Positive and negative controls were utilized. Mask and gloves (PPE) were also utilized. Gloves were changed prior to each exam. Phenolphthalein was utilized for each of the exams.
6617P21600PBT	Completed a positive/negative control test prior to the actual examination. This was conducted to show that the results were functioning properly, which it did.
8267G21600PBT	I completed the exam after a successful positive and negative control test.
9385L21600PBT	Tests were performed wearing gloves. A positive and negative control test was performed with the Phenolphthalein before use in testing. I utilized distilled water on a swab which was scrubbed on the stain and then tested the swab with Phenolphthalein for each of the 4 items.

2798U21600PBT	Item 3 - human blood indicated (Hematrace) Item 4 - human blood indicated (Hematrace)
8728E21600PBT	ortho-tolidine was the chemical test used.
1285N21600PBT	Unable to leave tests blank above, but all four items were presumptively tested using Bluestar OBTI.
1357J21600PBT	Unable to leave tests blank above, but all four items were presumptively tested using Bluestar OBTI.
2336C21600PBT	Unable to leave tests blank above, but all four items were presumptively tested using Bluestar OBTI.
4530H21600PBT	Unable to leave tests blank above, but all four items were presumptively tested using Bluestar OBTI.
4909R21600PBT	Unable to leave tests blank above, but all four items were presumptively tested using Bluestar OBTI.
7067H21600PBT	Unable to leave tests blank above, but all four items were presumptively tested using Bluestar OBTI.
9073R21600PBT	Unable to leave tests blank above, but all four items were presumptively tested using Bluestar OBTI.
9359I21600PBT	Unable to leave tests blank above, but all four items were presumptively tested using Bluestar OBTI.
9899A21600PBT	No item 5 was provided with the test #21600PBT
5991K21600PBT	On all of the items (1-4), the Kastle-Meyer test was used also along with the Hemastix test and produced the same results as the Hemastix test for all the items.

Manufacturer's Additional Observations

Based upon a review of the submitted responses, the following observations were noted:

1. Regardless of experience, training, certification, accreditation or employment status, no inconsistent responses were submitted.

Authorized by: Ron Smith, President

Date of Issue: June 9, 2021