



Ron Smith & Associates, Inc.

Testing Division

www.RonSmithandAssociates.com | testing@ronsmithandassociates.com

Summary Report

Latent Print Processing Proficiency Test #21501

Issued: June 1, 2021

On March 8, 2021, Ron Smith and Associates, Inc. (RS&A) shipped the Latent Print Processing Proficiency Test #21501. Participants were required to submit their responses no later than April 19, 2021 in order for them to be included in this summary report.

A total of 70 tests were ordered and shipped, with 60 participants returning their responses. **This summary report is based on 240 individual responses (60 participants returning 4 responses each).** The test included four items for latent print processing.

The results presented in this report reflect whether or not the participants' submitted results agree or disagree with the assigned values garnered from pre-distribution testing and outlined in *The Manufacturer's Report* (Appendix 1). The primary purpose of a Summary Report is to provide an overall documentation of all the submitted responses. It is RS&A's intention to go a step further by providing more meaningful statistical results through analyzing the submitted responses in relation to the demographics obtained from each of the examiners participating in this proficiency test. All results and statistics for this test will be outlined through graphs and charts found in the remainder of this report.

Prior to distribution of this test, all the expected responses were determined, by internal and external consensus, to be either "Friction Ridge Detail **was** Developed" or "Friction Ridge Detail **was not** Developed". In designing this proficiency test, it is understood that sometimes friction ridge detail may be present on an item during the manufacturing process. For this reason, all items are cleaned prior to being included in a test. Because of the latent nature of the prints, it is possible that some portions of friction ridge detail can be missed in the cleaning process. To satisfy this condition for the test, all developed friction ridge detail must be photographed in order to be given credit. If the photograph is accepted, the participant will be given credit for the friction ridge development in instances when the expected answer was "Friction Ridge Detail **was not** Developed".

RS&A strives to maintain the confidentiality of all its clients and participants. All results are obtained and published using randomly generated test codes. RS&A will not release the identity of any participant without the written consent of the participant and/or the agency involved.

For any questions or further information, please contact our Proficiency Testing Coordinator by emailing testing@ronsmithandassociates.com or by calling toll free at 1-866-832-6772.

Appendix 1

Test Manufacturer's Information

Latent Print Processing Proficiency Test #21501

This proficiency test consisted of four items labeled as Item #1 (Ziplock Bag), Item #2 (Coin Wrapper), Item #3 (Playing Card) and Item #4 (Cigarette Butt). The items were similar to those normally encountered in latent print processing casework. The participant was required to process the items for the presence or absence of friction ridge detail. The assigned values are as follows:

Item #	Assigned Value
Item #1 (Ziplock Bag)	Friction Ridge Detail Was Developed – Supported with Electronically Captured Image
Item #2 (Coin Wrapper)	Friction Ridge Detail Was Developed – Supported with Electronically Captured Image
Item #3 (Playing Card)	Friction Ridge Detail Was Not Developed
Item #4 (Cigarette Butt)	Friction Ridge Detail Was Developed – Supported with Electronically Captured Image

The assigned values below were determined through the ground truth information and verified through unanimous agreement during pre-distribution testing.

Known Matrix used:

Item 1: Sebaceous oils, **Item 2:** Amino Acids, **Item 3:** N/A, **Item 4:** Amino Acids

Individual reports will be provided to participants by mid May 2021. The final summary report for this test will be posted on the Ron Smith and Associates website by early June 2021 using the following link: <http://www.ronsmithandassociates.com/proficiency/lpprocessing.html>

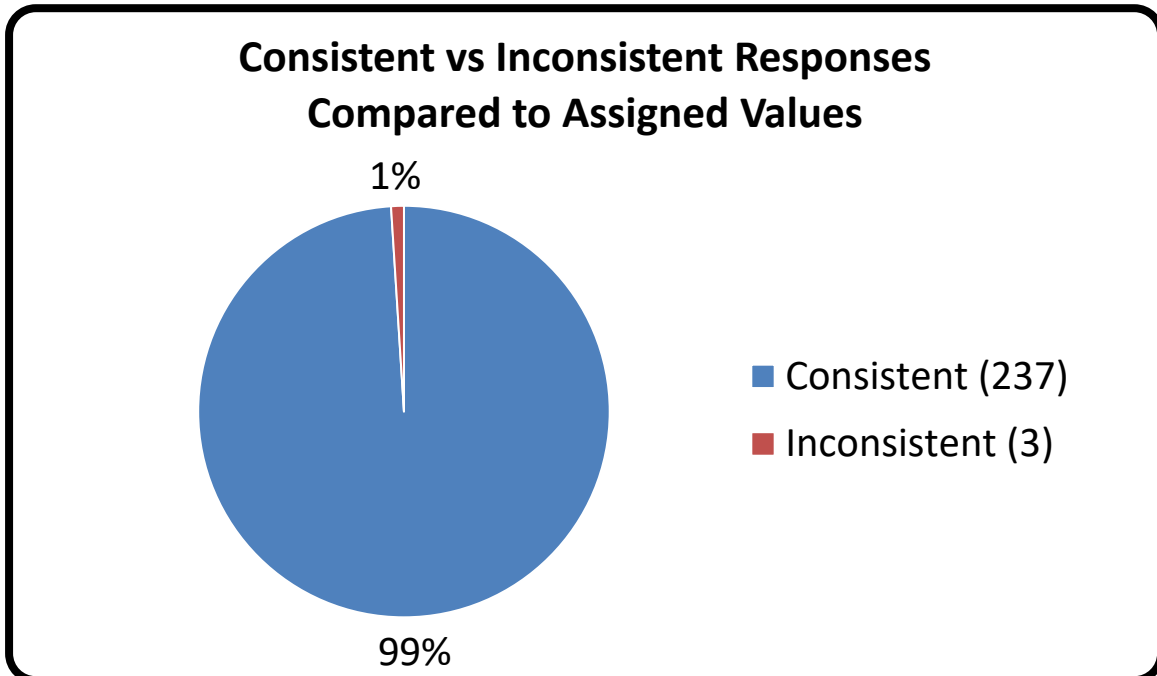
It is recommended to postpone evaluating an individual's performance until after you have received the statistical averages contained in the summary report.

For any questions or further information, contact the Proficiency Testing Coordinator by emailing testing@ronsmithandassociates.com or call toll free at 1-866-832-6772.

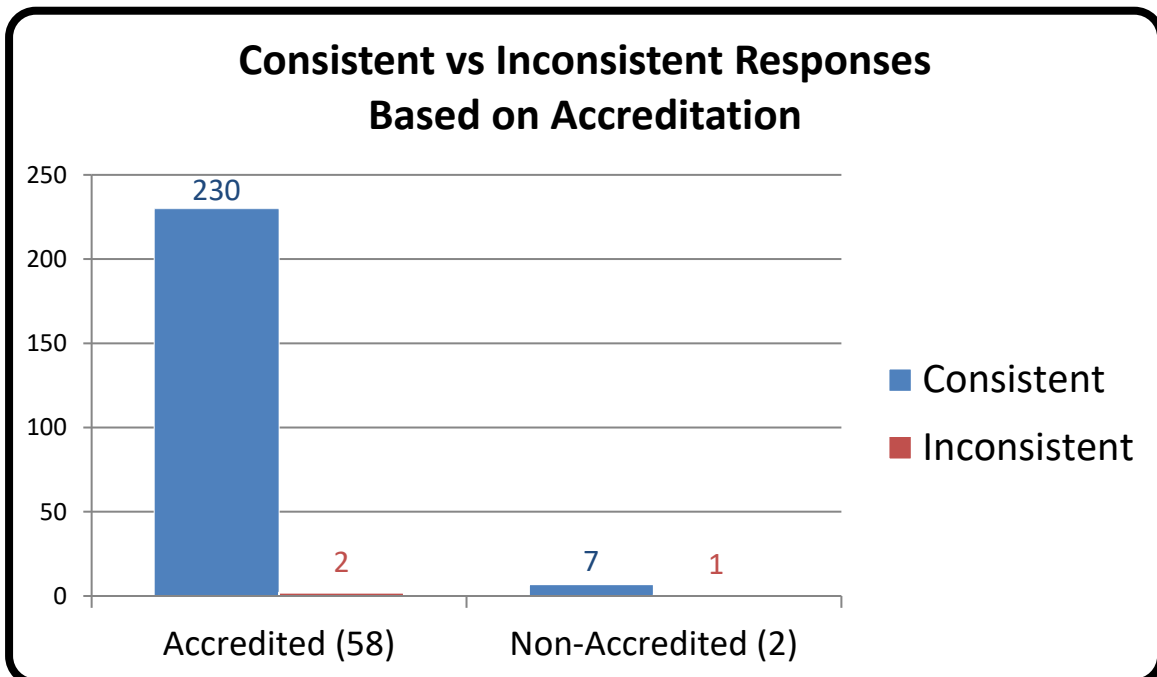
Authorized by: Ron Smith, President

Issue Date: May 1, 2021

Appendix 2



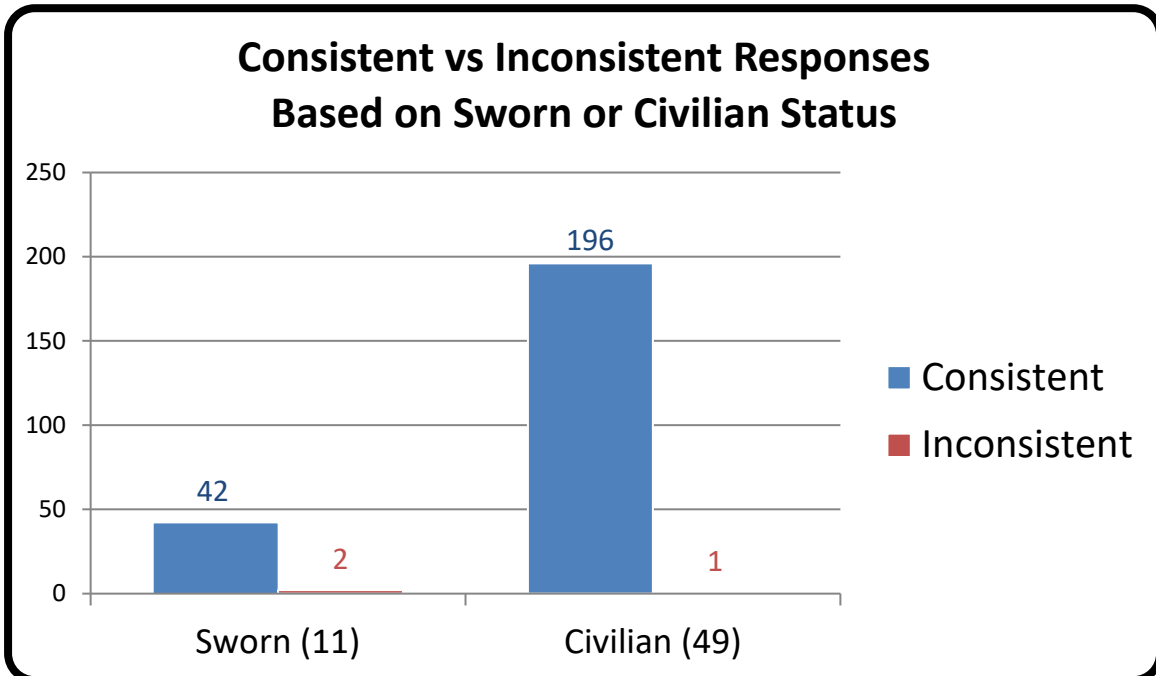
Appendix 3



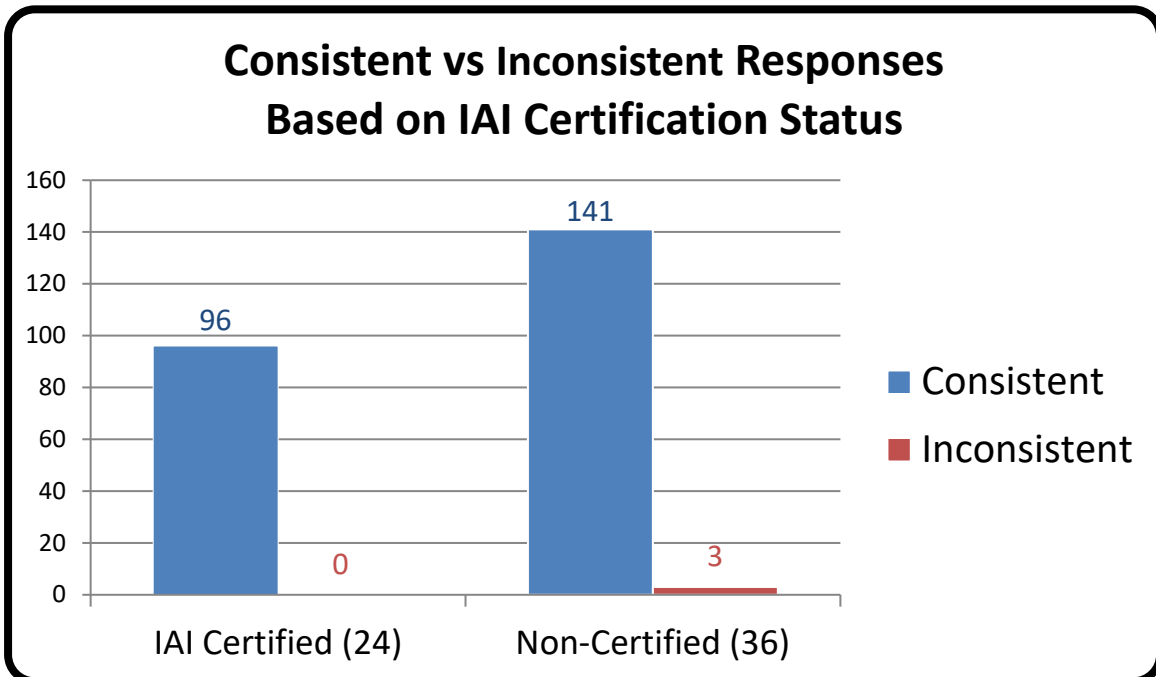
*Numerical values shown are based on **60 participant submissions, each with 4 responses, equaling 240 total responses.**

*For further information, please read **Manufacturer's Additional Observations** on the final page of this report.

Appendix 4



Appendix 5

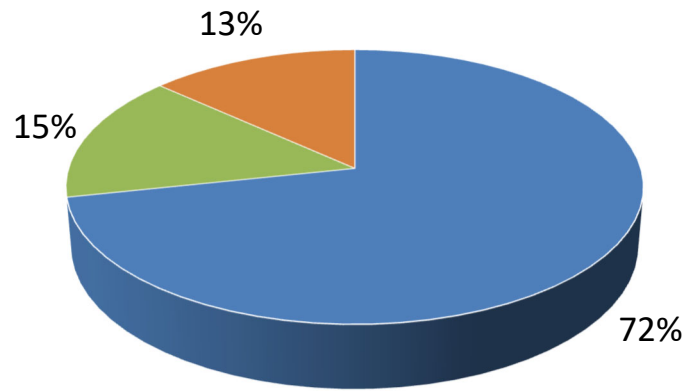


*Numerical values shown are based on 60 participant submissions, each with 4 responses, equaling 240 total responses.

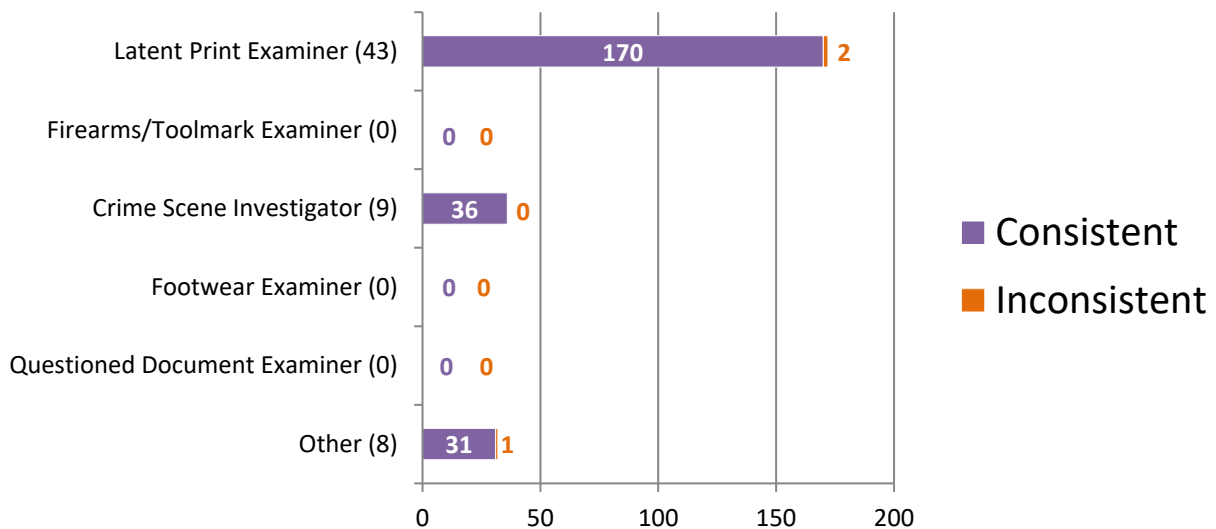
*For further information, please read *Manufacturer's Additional Observations* on the final page of this report.

Appendix 6

Percentage of Participants Based on Primary Job Position



Consistent vs Inconsistent Responses Based on Primary Job Position

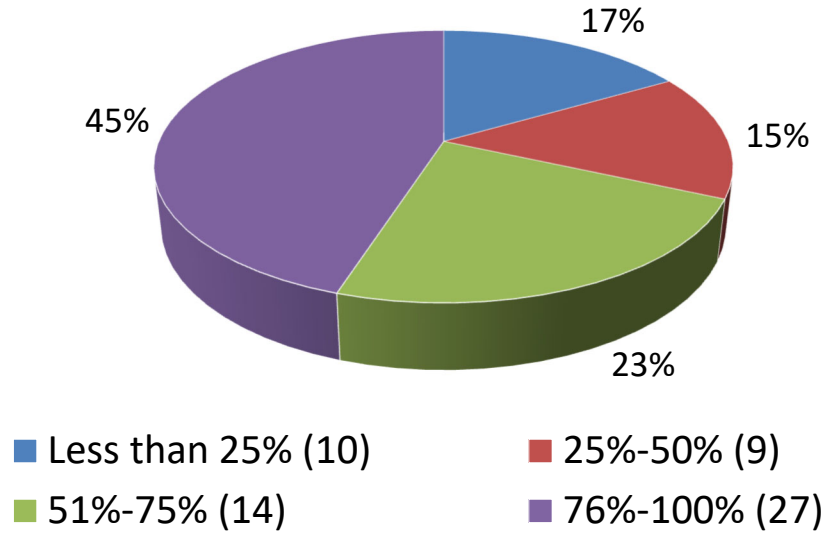


*Numerical values shown are based on **60 participant submissions, each with 4 responses, equaling 240 total responses.**

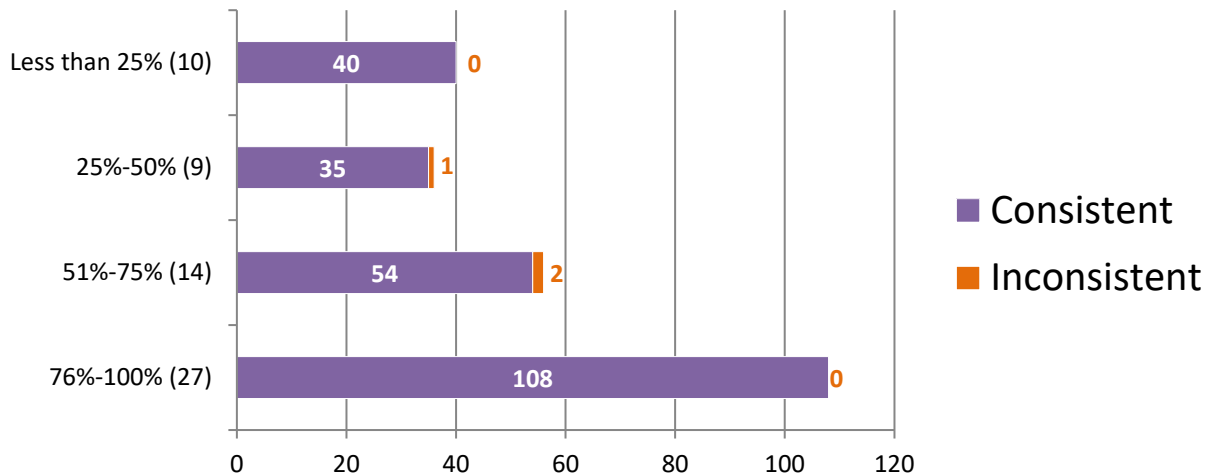
*For further information, please read **Manufacturer's Additional Observations** on the final page of this report.

Appendix 7

Percentage of Participants Based on Time Devoted to Processing of Latent Print Evidence



Consistent vs Inconsistent Responses Based on Time Devoted to Processing of Latent Print Evidence

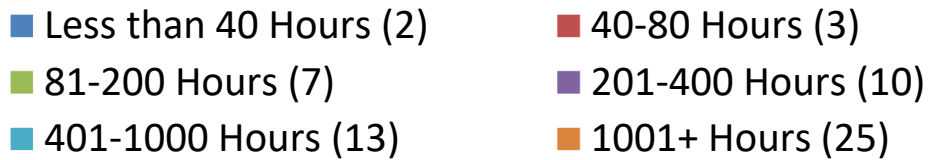
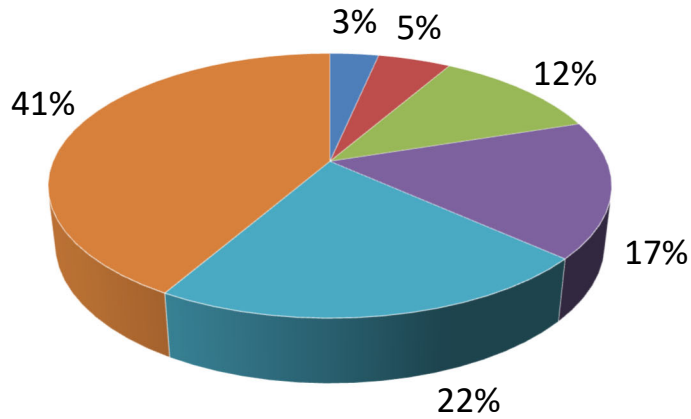


*Numerical values shown are based on **60 participant submissions, each with 4 responses, equaling 240 total responses.**

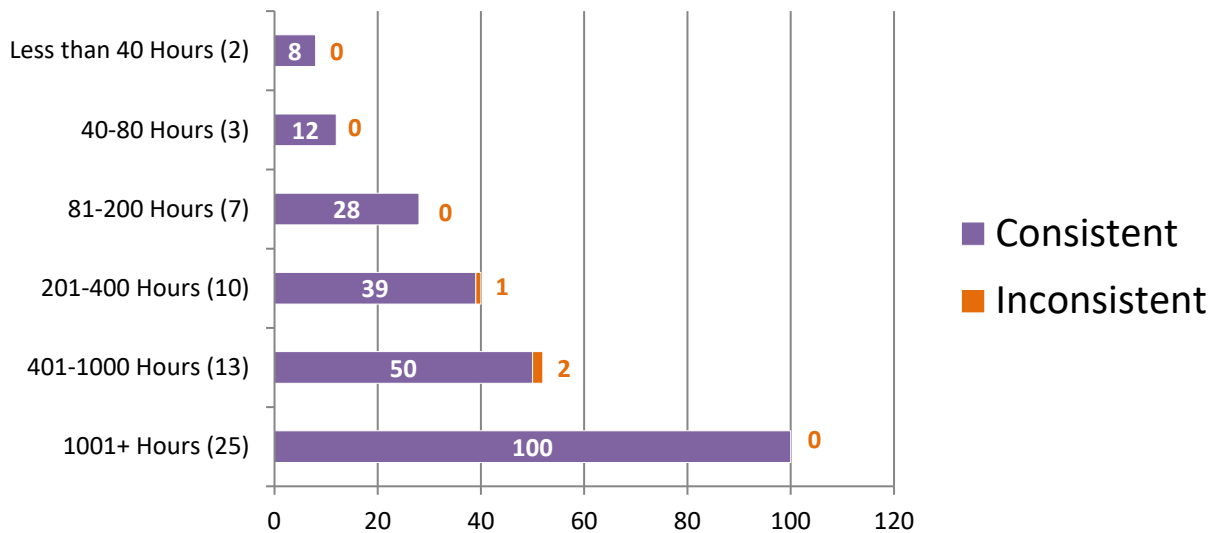
*For further information, please read *Manufacturer's Additional Observations* on the final page of this report.

Appendix 8

Percentage of Participants Based on Hours of Latent Print Processing Training Completed



Consistent vs Inconsistent Responses Based on Hours of Latent Print Processing Training Completed

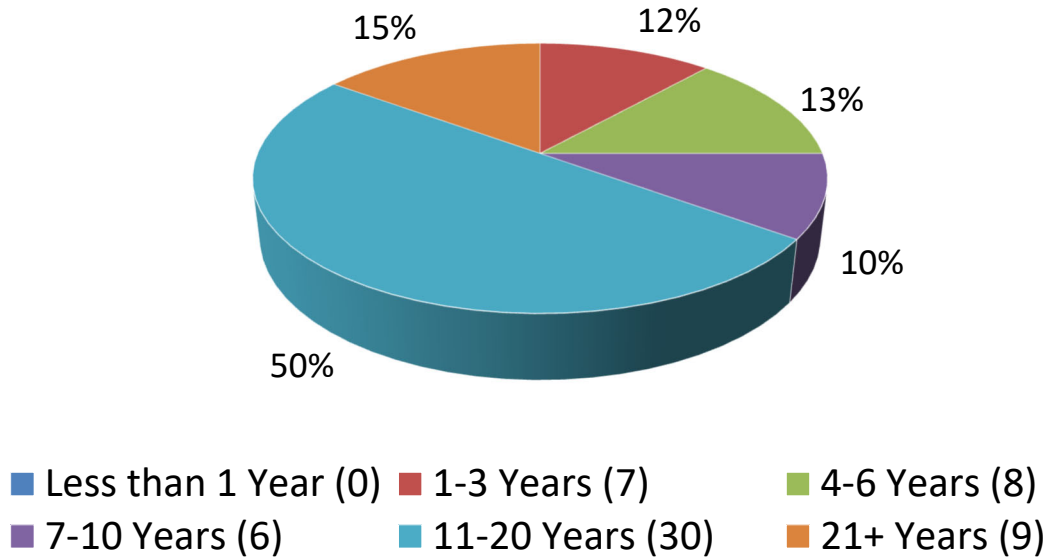


*Numerical values shown are based on **60 participant submissions, each with 4 responses, equaling 240 total responses.**

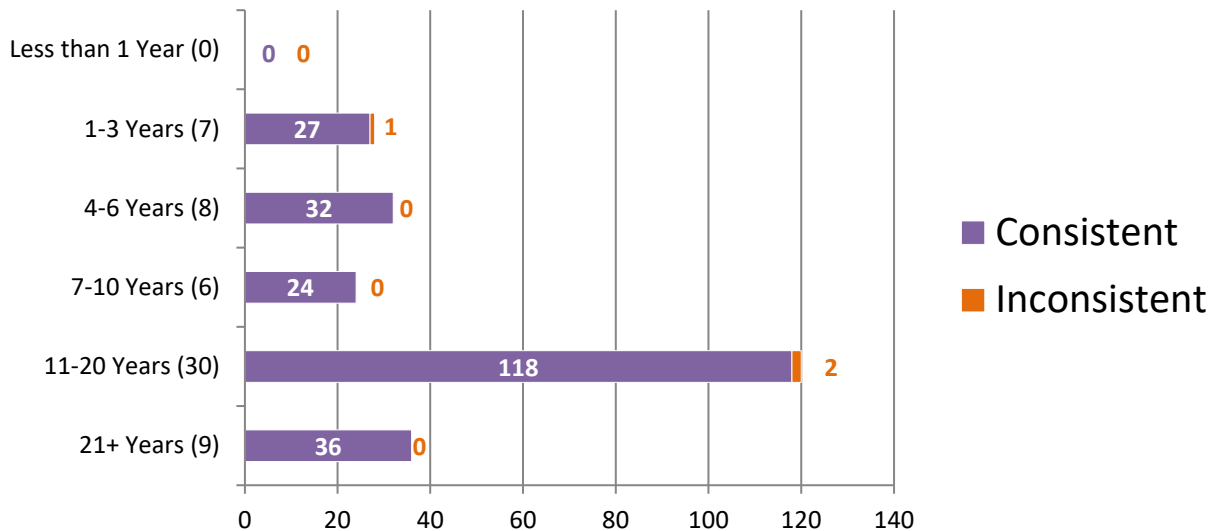
*For further information, please read *Manufacturer's Additional Observations* on the final page of this report.

Appendix 9

Percentage of Participants Based on Years of Experience in Latent Print Processing



Consistent vs Inconsistent Responses Based on Years of Experience in Latent Print Processing

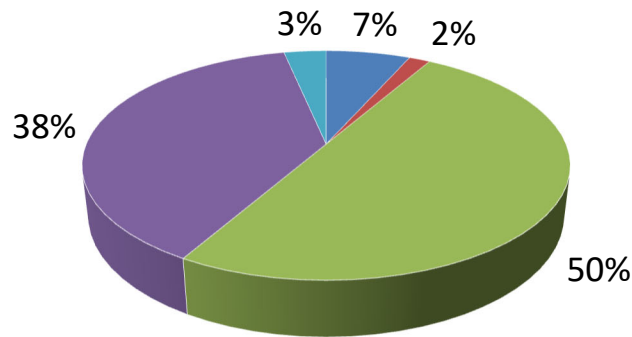


*Numerical values shown are based on **60 participant submissions, each with 4 responses, equaling 240 total responses.**

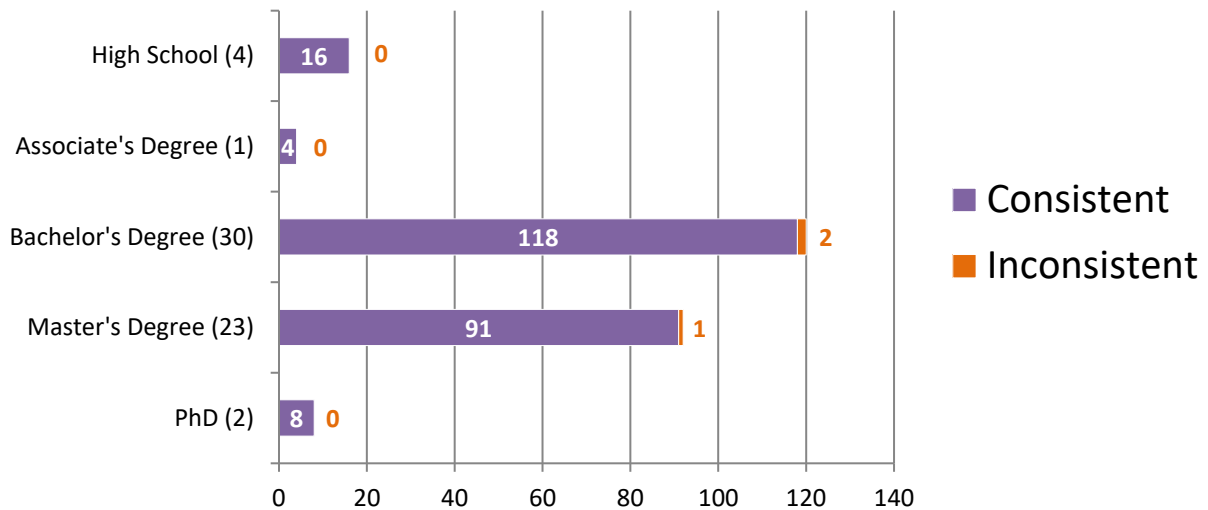
*For further information, please read *Manufacturer's Additional Observations* on the final page of this report.

Appendix 10

Percentage of Participants Based on Highest Level of Education Completed



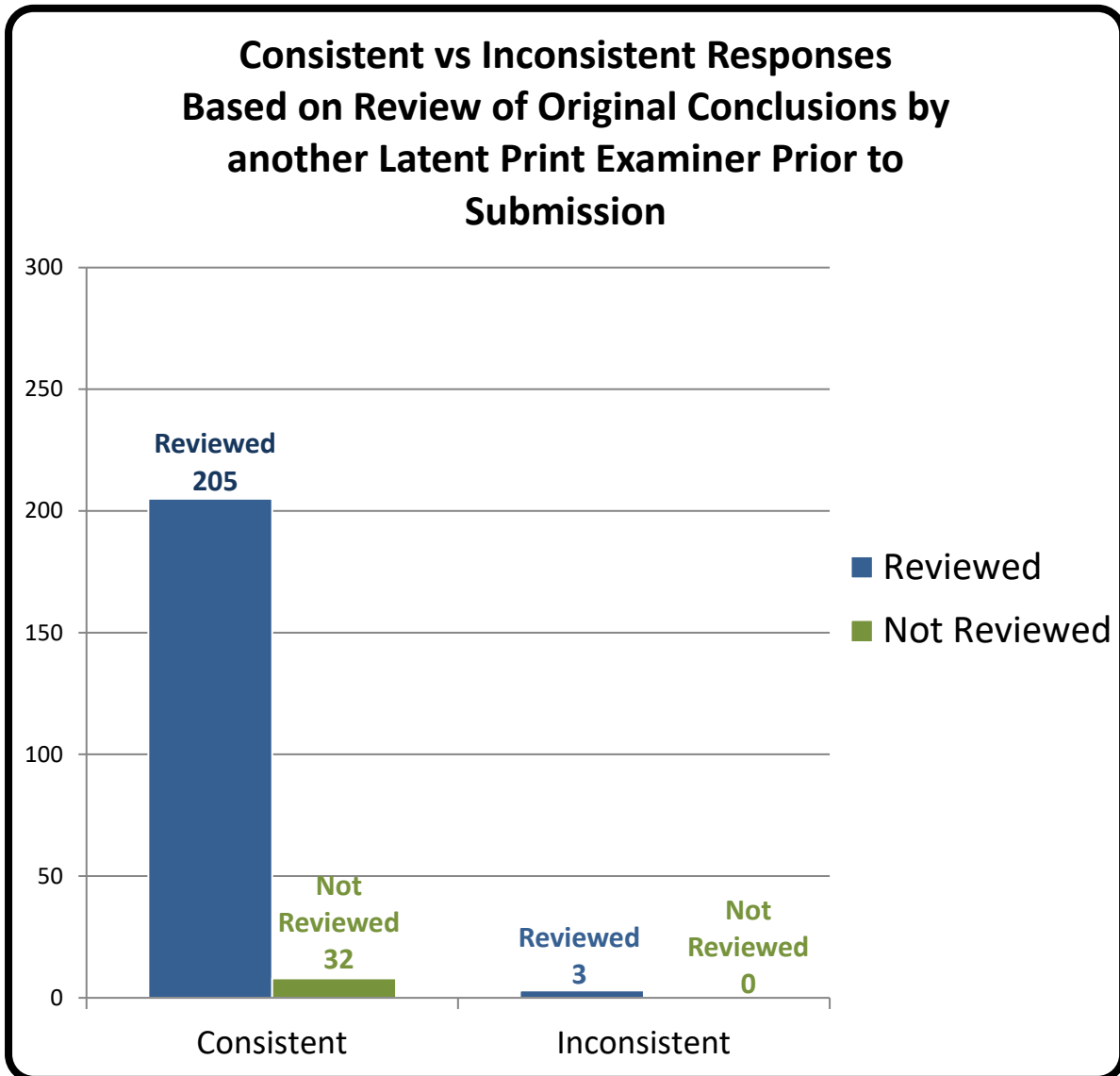
Consistent vs Inconsistent Responses Based on Highest Level of Education Completed



*Numerical values shown are based on **60 participant submissions, each with 4 responses, equaling 240 total responses.**

*For further information, please read **Manufacturer's Additional Observations** on the final page of this report.

Appendix 11



*Numerical values shown are based on **60 participant submissions, each with 4 responses, equaling 240 total responses.**

*For further information, please read ***Manufacturer's Additional Observations*** on the final page of this report.

Appendix 12

Participant Responses Listed by Test Code

	Item #	Item #1	Item #2	Item #3	Item #4
	Assigned Values	Friction Ridge Detail <u>Was</u> Developed and Supported with photograph	Friction Ridge Detail <u>Was</u> Developed and Supported with photograph	Friction Ridge Detail <u>Was Not</u> Developed	Friction Ridge Detail <u>Was</u> Developed and Supported with photograph
Test Code	3738Z21501	Friction Ridge Detail <u>Was</u> Developed and Supported with photograph	Friction Ridge Detail <u>Was</u> Developed and Supported with photograph	Friction Ridge Detail <u>Was Not</u> Developed	Friction Ridge Detail <u>Was</u> Developed and Supported with photograph
	6478U21501	Friction Ridge Detail <u>Was</u> Developed and Supported with photograph	Friction Ridge Detail <u>Was</u> Developed and Supported with photograph	Friction Ridge Detail <u>Was</u> Developed and Supported with photograph	Friction Ridge Detail <u>Was</u> Developed and Supported with photograph
	8566F21501	Friction Ridge Detail <u>Was</u> Developed and Supported with photograph	Friction Ridge Detail <u>Was</u> Developed and Supported with photograph	Friction Ridge Detail <u>Was Not</u> Developed	Friction Ridge Detail <u>Was</u> Developed and Supported with photograph
	3745X21501	Friction Ridge Detail <u>Was</u> Developed and Supported with photograph	Friction Ridge Detail <u>Was</u> Developed and Supported with photograph	Friction Ridge Detail <u>Was Not</u> Developed	Item 4 was not processed
	6500J21501	Friction Ridge Detail <u>Was</u> Developed and Supported with photograph	Friction Ridge Detail <u>Was</u> Developed and Supported with photograph	Friction Ridge Detail <u>Was Not</u> Developed	Friction Ridge Detail <u>Was</u> Developed and Supported with photograph
	5750Q21501	Friction Ridge Detail <u>Was</u> Developed and Supported with photograph	Friction Ridge Detail <u>Was</u> Developed and Supported with photograph	Friction Ridge Detail <u>Was</u> Developed and Supported with photograph	Friction Ridge Detail <u>Was</u> Developed and Supported with photograph
	6553M21501	Friction Ridge Detail <u>Was</u> Developed and Supported with photograph	Friction Ridge Detail <u>Was</u> Developed and Supported with photograph	Friction Ridge Detail <u>Was Not</u> Developed	Friction Ridge Detail <u>Was</u> Developed and Supported with photograph

	3821S21501	Friction Ridge Detail <u>Was</u> Developed and Supported with photograph	Friction Ridge Detail <u>Was</u> Developed and Supported with photograph	Friction Ridge Detail <u>Was Not</u> Developed	Friction Ridge Detail <u>Was</u> Developed and Supported with photograph
	4522S21501	Friction Ridge Detail <u>Was</u> Developed and Supported with photograph	Friction Ridge Detail <u>Was</u> Developed and Supported with photograph	Friction Ridge Detail <u>Was Not</u> Developed	Friction Ridge Detail <u>Was</u> Developed and Supported with photograph
	3563M21501	Friction Ridge Detail <u>Was</u> Developed and Supported with photograph	Friction Ridge Detail <u>Was</u> Developed and Supported with photograph	Friction Ridge Detail <u>Was Not</u> Developed	Friction Ridge Detail <u>Was</u> Developed and Supported with photograph
	3479H21501	Friction Ridge Detail <u>Was</u> Developed and Supported with photograph	Friction Ridge Detail <u>Was</u> Developed and Supported with photograph	Friction Ridge Detail <u>Was Not</u> Developed	Friction Ridge Detail <u>Was</u> Developed and Supported with photograph
	290G21501	Friction Ridge Detail <u>Was</u> Developed and Supported with photograph	Friction Ridge Detail <u>Was</u> Developed and Supported with photograph	Friction Ridge Detail <u>Was Not</u> Developed	Friction Ridge Detail <u>Was</u> Developed and Supported with photograph
	231X21501	Friction Ridge Detail <u>Was</u> Developed and Supported with photograph	Friction Ridge Detail <u>Was</u> Developed and Supported with photograph	Friction Ridge Detail <u>Was Not</u> Developed	Friction Ridge Detail <u>Was Not</u> Developed
	4163M21501	Friction Ridge Detail <u>Was</u> Developed and Supported with photograph	Friction Ridge Detail <u>Was</u> Developed and Supported with photograph	Friction Ridge Detail <u>Was Not</u> Developed	Friction Ridge Detail <u>Was</u> Developed and Supported with photograph
	1395Q21501	Friction Ridge Detail <u>Was</u> Developed and Supported with photograph	Friction Ridge Detail <u>Was</u> Developed and Supported with photograph	Friction Ridge Detail <u>Was Not</u> Developed	Friction Ridge Detail <u>Was</u> Developed and Supported with photograph
	9558W21501	Friction Ridge Detail <u>Was</u> Developed and Supported with photograph	Friction Ridge Detail <u>Was</u> Developed and Supported with photograph	Friction Ridge Detail <u>Was Not</u> Developed	Friction Ridge Detail <u>Was</u> Developed and Supported with photograph
	1413021501	Friction Ridge Detail <u>Was</u> Developed and Supported with photograph	Friction Ridge Detail <u>Was</u> Developed and Supported with photograph	Friction Ridge Detail <u>Was Not</u> Developed	Friction Ridge Detail <u>Was</u> Developed and Supported with photograph

7564X21501	Friction Ridge Detail <u>Was</u> Developed and Supported with photograph	Friction Ridge Detail <u>Was</u> Developed and Supported with photograph	Friction Ridge Detail <u>Was Not</u> Developed	Friction Ridge Detail <u>Was</u> Developed and Supported with photograph
2941L21501	Friction Ridge Detail <u>Was</u> Developed and Supported with photograph	Friction Ridge Detail <u>Was</u> Developed and Supported with photograph	Friction Ridge Detail <u>Was Not</u> Developed	Friction Ridge Detail <u>Was</u> Developed and Supported with photograph
5776I21501	Friction Ridge Detail <u>Was</u> Developed and Supported with photograph	Friction Ridge Detail <u>Was</u> Developed and Supported with photograph	Friction Ridge Detail <u>Was Not</u> Developed	Friction Ridge Detail <u>Was</u> Developed and Supported with photograph
549K21501	Friction Ridge Detail <u>Was</u> Developed and Supported with photograph	Friction Ridge Detail <u>Was</u> Developed and Supported with photograph	Friction Ridge Detail <u>Was Not</u> Developed	Friction Ridge Detail <u>Was</u> Developed and Supported with photograph
9412V21501	Friction Ridge Detail <u>Was</u> Developed and Supported with photograph	Friction Ridge Detail <u>Was</u> Developed and Supported with photograph	Friction Ridge Detail <u>Was</u> Developed and Supported with photograph	Friction Ridge Detail <u>Was</u> Developed and Supported with photograph
5358Q21501	Friction Ridge Detail <u>Was</u> Developed and Supported with photograph	Friction Ridge Detail <u>Was</u> Developed and Supported with photograph	Friction Ridge Detail <u>Was Not</u> Developed	Friction Ridge Detail <u>Was</u> Developed and Supported with photograph
2948M21501	Friction Ridge Detail <u>Was</u> Developed and Supported with photograph	Friction Ridge Detail <u>Was</u> Developed and Supported with photograph	Friction Ridge Detail <u>Was Not</u> Developed	Friction Ridge Detail <u>Was</u> Developed and Supported with photograph
1623S21501	Friction Ridge Detail <u>Was</u> Developed and Supported with photograph	Friction Ridge Detail <u>Was</u> Developed and Supported with photograph	Friction Ridge Detail <u>Was Not</u> Developed	Friction Ridge Detail <u>Was</u> Developed and Supported with photograph
1049E21501	Friction Ridge Detail <u>Was</u> Developed and Supported with photograph	Friction Ridge Detail <u>Was</u> Developed and Supported with photograph	Friction Ridge Detail <u>Was Not</u> Developed	Friction Ridge Detail <u>Was</u> Developed and Supported with photograph
7532C21501	Friction Ridge Detail <u>Was</u> Developed and Supported with photograph	Friction Ridge Detail <u>Was</u> Developed and Supported with photograph	Friction Ridge Detail <u>Was Not</u> Developed	Friction Ridge Detail <u>Was</u> Developed and Supported with photograph

6596G21501	Friction Ridge Detail <u>Was</u> Developed and Supported with photograph	Friction Ridge Detail <u>Was</u> Developed and Supported with photograph	Friction Ridge Detail <u>Was Not</u> Developed	Friction Ridge Detail <u>Was</u> Developed and Supported with photograph
992U21501	Friction Ridge Detail <u>Was</u> Developed and Supported with photograph	Friction Ridge Detail <u>Was</u> Developed and Supported with photograph	Friction Ridge Detail <u>Was Not</u> Developed	Friction Ridge Detail <u>Was</u> Developed and Supported with photograph
4688J21501	Friction Ridge Detail <u>Was</u> Developed and Supported with photograph	Friction Ridge Detail <u>Was</u> Developed and Supported with photograph	Friction Ridge Detail <u>Was Not</u> Developed	Friction Ridge Detail <u>Was</u> Developed and Supported with photograph
2599I21501	Friction Ridge Detail <u>Was</u> Developed and Supported with photograph	Friction Ridge Detail <u>Was</u> Developed and Supported with photograph	Friction Ridge Detail <u>Was Not</u> Developed	Friction Ridge Detail <u>Was</u> Developed and Supported with photograph
9061K21501	Friction Ridge Detail <u>Was</u> Developed and Supported with photograph	Friction Ridge Detail <u>Was</u> Developed and Supported with photograph	Friction Ridge Detail <u>Was Not</u> Developed	Friction Ridge Detail <u>Was</u> Developed and Supported with photograph
9752H21501	Friction Ridge Detail <u>Was</u> Developed and Supported with photograph	Friction Ridge Detail <u>Was</u> Developed and Supported with photograph	Friction Ridge Detail <u>Was Not</u> Developed	Friction Ridge Detail <u>Was</u> Developed and Supported with photograph
6216Q21501	Friction Ridge Detail <u>Was</u> Developed and Supported with photograph	Friction Ridge Detail <u>Was</u> Developed and Supported with photograph	Friction Ridge Detail <u>Was Not</u> Developed	Friction Ridge Detail <u>Was</u> Developed and Supported with photograph
3279T21501	Friction Ridge Detail <u>Was</u> Developed and Supported with photograph	Friction Ridge Detail <u>Was</u> Developed and Supported with photograph	Friction Ridge Detail <u>Was Not</u> Developed	Friction Ridge Detail <u>Was</u> Developed and Supported with photograph
5552D21501	Friction Ridge Detail <u>Was</u> Developed and Supported with photograph	Friction Ridge Detail <u>Was</u> Developed and Supported with photograph	Friction Ridge Detail <u>Was Not</u> Developed	Friction Ridge Detail <u>Was</u> Developed and Supported with photograph
3435P21501	Friction Ridge Detail <u>Was</u> Developed and Supported with photograph	Friction Ridge Detail <u>Was</u> Developed and Supported with photograph	Friction Ridge Detail <u>Was Not</u> Developed	Friction Ridge Detail <u>Was</u> Developed and Supported with photograph

	4485E21501	Friction Ridge Detail <u>Was</u> Developed and Supported with photograph	Friction Ridge Detail <u>Was Not</u> Developed	Friction Ridge Detail <u>Was Not</u> Developed	Friction Ridge Detail <u>Was</u> Developed and Supported with photograph
	9227T21501	Friction Ridge Detail <u>Was</u> Developed and Supported with photograph	Friction Ridge Detail <u>Was</u> Developed and Supported with photograph	Friction Ridge Detail <u>Was Not</u> Developed	Friction Ridge Detail <u>Was Not</u> Developed
	1650W21501	Friction Ridge Detail <u>Was</u> Developed and Supported with photograph	Friction Ridge Detail <u>Was</u> Developed and Supported with photograph	Friction Ridge Detail <u>Was Not</u> Developed	Friction Ridge Detail <u>Was</u> Developed and Supported with photograph
	3571G21501	Friction Ridge Detail <u>Was</u> Developed and Supported with photograph	Friction Ridge Detail <u>Was</u> Developed and Supported with photograph	Friction Ridge Detail <u>Was Not</u> Developed	Friction Ridge Detail <u>Was</u> Developed and Supported with photograph
	2171S21501	Friction Ridge Detail <u>Was</u> Developed and Supported with photograph	Friction Ridge Detail <u>Was</u> Developed and Supported with photograph	Friction Ridge Detail <u>Was Not</u> Developed	Friction Ridge Detail <u>Was</u> Developed and Supported with photograph
	8968Q21501	Friction Ridge Detail <u>Was</u> Developed and Supported with photograph	Friction Ridge Detail <u>Was</u> Developed and Supported with photograph	Friction Ridge Detail <u>Was Not</u> Developed	Friction Ridge Detail <u>Was</u> Developed and Supported with photograph
	9035K21501	Friction Ridge Detail <u>Was</u> Developed and Supported with photograph	Friction Ridge Detail <u>Was</u> Developed and Supported with photograph	Friction Ridge Detail <u>Was Not</u> Developed	Friction Ridge Detail <u>Was</u> Developed and Supported with photograph
	4055H21501	Friction Ridge Detail <u>Was</u> Developed and Supported with photograph	Friction Ridge Detail <u>Was</u> Developed and Supported with photograph	Friction Ridge Detail <u>Was Not</u> Developed	Friction Ridge Detail <u>Was</u> Developed and Supported with photograph
	5424D21501	Friction Ridge Detail <u>Was</u> Developed and Supported with photograph	Friction Ridge Detail <u>Was</u> Developed and Supported with photograph	Friction Ridge Detail <u>Was Not</u> Developed	Friction Ridge Detail <u>Was</u> Developed and Supported with photograph
	6967P21501	Friction Ridge Detail <u>Was</u> Developed and Supported with photograph	Friction Ridge Detail <u>Was</u> Developed and Supported with photograph	Friction Ridge Detail <u>Was Not</u> Developed	Friction Ridge Detail <u>Was</u> Developed and Supported with photograph

9707K21501	Friction Ridge Detail <u>Was</u> Developed and Supported with photograph	Friction Ridge Detail <u>Was</u> Developed and Supported with photograph	Friction Ridge Detail <u>Was Not</u> Developed	Friction Ridge Detail <u>Was</u> Developed and Supported with photograph
7811G21501	Friction Ridge Detail <u>Was</u> Developed and Supported with photograph	Friction Ridge Detail <u>Was</u> Developed and Supported with photograph	Friction Ridge Detail <u>Was Not</u> Developed	Friction Ridge Detail <u>Was</u> Developed and Supported with photograph
5713B21501	Friction Ridge Detail <u>Was</u> Developed and Supported with photograph	Friction Ridge Detail <u>Was</u> Developed and Supported with photograph	Friction Ridge Detail <u>Was Not</u> Developed	Friction Ridge Detail <u>Was</u> Developed and Supported with photograph
8757T21501	Friction Ridge Detail <u>Was</u> Developed and Supported with photograph	Friction Ridge Detail <u>Was</u> Developed and Supported with photograph	Friction Ridge Detail <u>Was Not</u> Developed	Friction Ridge Detail <u>Was</u> Developed and Supported with photograph
4077X21501	Friction Ridge Detail <u>Was</u> Developed and Supported with photograph	Friction Ridge Detail <u>Was</u> Developed and Supported with photograph	Friction Ridge Detail <u>Was Not</u> Developed	Friction Ridge Detail <u>Was</u> Developed and Supported with photograph
6522N21501	Friction Ridge Detail <u>Was</u> Developed and Supported with photograph	Friction Ridge Detail <u>Was</u> Developed and Supported with photograph	Friction Ridge Detail <u>Was Not</u> Developed	Friction Ridge Detail <u>Was</u> Developed and Supported with photograph
1242A21501	Friction Ridge Detail <u>Was</u> Developed and Supported with photograph	Friction Ridge Detail <u>Was</u> Developed and Supported with photograph	Friction Ridge Detail <u>Was Not</u> Developed	Friction Ridge Detail <u>Was</u> Developed and Supported with photograph
5846Q21501	Friction Ridge Detail <u>Was</u> Developed and Supported with photograph	Friction Ridge Detail <u>Was</u> Developed and Supported with photograph	Friction Ridge Detail <u>Was Not</u> Developed	Friction Ridge Detail <u>Was</u> Developed and Supported with photograph
6987Y21501	Friction Ridge Detail <u>Was</u> Developed and Supported with photograph	Friction Ridge Detail <u>Was</u> Developed and Supported with photograph	Friction Ridge Detail <u>Was Not</u> Developed	Friction Ridge Detail <u>Was</u> Developed and Supported with photograph
8110I21501	Friction Ridge Detail <u>Was</u> Developed and Supported with photograph	Friction Ridge Detail <u>Was</u> Developed and Supported with photograph	Friction Ridge Detail <u>Was Not</u> Developed	Friction Ridge Detail <u>Was</u> Developed and Supported with photograph

	7606F21501	Friction Ridge Detail <u>Was</u> Developed and Supported with photograph	Friction Ridge Detail <u>Was</u> Developed and Supported with photograph	Friction Ridge Detail <u>Was Not</u> Developed	Friction Ridge Detail <u>Was</u> Developed and Supported with photograph
	4975J21501	Friction Ridge Detail <u>Was</u> Developed and Supported with photograph	Friction Ridge Detail <u>Was</u> Developed and Supported with photograph	Friction Ridge Detail <u>Was Not</u> Developed	Friction Ridge Detail <u>Was</u> Developed and Supported with photograph
	2414E21501	Friction Ridge Detail <u>Was</u> Developed and Supported with photograph	Friction Ridge Detail <u>Was</u> Developed and Supported with photograph	Friction Ridge Detail <u>Was Not</u> Developed	Friction Ridge Detail <u>Was</u> Developed and Supported with photograph

Totals

Item #	Item #1	Item #2	Item #3	Item #4
Assigned Values	Friction Ridge Detail <u>Was</u> Developed and Supported with photograph	Friction Ridge Detail <u>Was</u> Developed and Supported with photograph	Friction Ridge Detail <u>Was or Was Not</u> Developed	Friction Ridge Detail <u>Was</u> Developed and Supported with photograph
Consistent Responses	60	59	60	57
Inconsistent Responses	0	1	0	2
Percentage of Consistent Responses	100%	98%	100%	97%

Participant's Additional Comments

Test Code	Comments
2414E21501	My only suggestion would be to add a page for defining/explaining the acronyms. For instance I did not know what ENFSI EFPWG was and had to google it in order to answer the last question on the Demographic Survey.
8566F21501	I had a third latent print recovered for Item 1 but no where to upload it. Item 4 did not have any visible ridges, but there was definitely a reaction to amino acids present on its surface so it was photographed and counted as "friction ridge detail developed"

3745X21501	Item 4 was not processed. Our policy is to send cigarette butts to LA COUNTY for processing. Our SOP does not include processing cigarette butts for prints.
6500J21501	Our agency does not process new or used cigarette butts, per MSHP policy. I would recommend items that are commonly seen in case work, such as glass/plastic bottles, small baggies, piece of glass windows, etc.
992U21501	Exhibit description incorrect for ITEM#1 - paperwork states 'one sealed cardboard box containing clear ziplock bag' whilst exhibit is a brown paper bag/envelope containing ziplock bag. Due to not effecting actual item of concern, processing was allowed to continue.
5750Q21501	Ridge detail on Item 3 very minor.
6553M21501	Item 1 : Same friction ridge was detected with light inspection before lumicyano. Item 2 : Same friction ridge with DFO, 1,2 indanedione and ninhydrin. Item 3 : no result with first treatment lumicyano than 1,2 indanedione Item 4 : Same friction ridge with ninhydrin
3821S21501	In item#2 friction ridge was developed in both surfaces (a - front surface, b- back surface). In item#4 one friction ridge was developed, captured and submitted (in black and in colored photo).
3479H21501	Items were in small envelopes - not boxes or bags.
7564X21501	Item 1 phot 1 - initial visual examination in daylight prior to treatment Item 1 photo 2 - developed after superglue fuming process Item 2 photo 1 - impression marked 'B' developed after Indandione process, further developed after Ninihydrin, unable to upload photograph due to developing a further impression marked 'C' on opposite side of paper exhibit (item 2)- therefore submitted 'C' as photo 2 for item 2 Item 2 photo 2 - 2nd impression developed marked 'C', on opposite side to impression in photo 1, as per note above. Item 3 negative result Item 4 Photo 1 - mark 'D' developed at indandione Item 4 Photo 2 - mark 'D' further developed and re-photographed following the Ninhydrin process As described above for item 2; impressions developed on both sides of the paper exhibit hence the reason for marking as 'B' (plain side) and 'C' (stripy side, and selecting the best image to upload. Ideally i would like to be able to submit a further image for mark 'B' following the Ninhydrin process, but the result portal will only allow for 2 photos per item.
1623S21501	After processing, all items had ridge detail except Item 3
4688J21501	On Item 1, were developed two latent prints, as can be noticed on applied Item 1-Photo 1. The first one and with good quality was shown on applied Item 1-Photo 2. The second latent print with far less quality was developed on the other side of the Item 1.

<p>4485E21501</p>	<p>Cabe comentar que el Laboratorio de Lofoscopia está en espera de la entrega del Certificado de Acreditación en la Norma ISO 17020 por ANAB y este es uno de los alcances de acreditación auditados.</p>
<p>9035K21501</p>	<p>item 1 has one fingerprint item 2 has two fingerprints on both sides of the paper item 3 has no fingerprints item 4 has one fingerprint</p>
<p>5846Q21501</p>	<p>I also had a coin wrapper included in my Item #3 envelope with the playing card.</p>
<p>7606F21501</p>	<p>Item#1 - Examined with high intensity light source for fluorescent marks before chemical treatment. One mark visualized and photographed. Item then treated with Cyanoacrylate and one mark (the same mark as visualized with fluorescence) developed and photographed. Item further subjected to Multi Metal Deposition treatment and the same mark was developed and photographed. Mark photograph after cyanoacrylate treatment submitted to RS&A. Item#2 - Examined with high intensity light source for fluorescent marks before chemical treatment. No marks visualized. Item treated with Ninhydrin and two marks were developed and photographed. Item further subjected to Physical Developer Treatment but no marks were developed. Mark photographs after Ninhydrin treatment submitted to RS&A. Item#3 - Examined with high intensity light source for fluorescent marks before chemical treatment. No marks visualized. Item treated with Vacuum Metal Deposition (Gold/Zinc followed by Silver). A small area of friction ridge detail was developed but was insufficient for submission and was not photographed. Item further subjected to Acid Violet 17 but no marks were developed. No mark photographs submitted to RS&A. Item#4 - Examined with high intensity light source for fluorescent marks before chemical treatment. No marks visualized. Item treated with Ninhydrin and one mark was developed. The cigarette paper was cut length ways along the glued seam and removed from the filter material and then photographed. Mark photograph after Ninhydrin treatment submitted to RS&A.</p>

Manufacturer’s Additional Observations

Based upon a review of the submitted responses, the following observations were noted:

1. There were only 3 inconsistent responses that could not be supported. These inconsistent responses were evenly spread out over all categories captured; therefore, informative or meaningful results could not be obtained.
2. When ridge detail was found on items that had an assigned value of “Friction Ridge Detail was NOT Developed”, in all such instances a picture was provided to support that friction ridge detail was in fact present on the item. In these instances, RS&A accepted both answers as correct.

Authorized by: Ron Smith, President
Date of Issue: June 1, 2021