



Ron Smith & Associates, Inc.

www.RonSmithandAssociates.com

Summary Report

Spring 2020 Tenprint Comparison Proficiency Test #20201

Issued: July 20, 2020

On March 16, 2020, Ron Smith and Associates, Inc. (RS&A) shipped the 2020 Spring Tenprint Proficiency Test #20201. Participants were required to submit their responses no later than June 2, 2020, in order for them to be included in this summary report.

A total of 54 tests were ordered and shipped, with 40 participants returning their responses. This test consisted of four parts: pattern recognition, comparison of multiple tenprint cards, comparison of single inked fingerprints, and AFIS side-by-side comparisons to known fingerprints. It was provided in a hard copy and/or digital copy format.

The results presented in this report reflect whether or not the participants' submitted results agree or disagree with the assigned values, garnered from pre-distribution testing and outlined in *The Manufacturer's Report* (Appendix 1). The primary purpose of a Summary Report is to provide an overall documentation of all the submitted responses. It is RS&A's intention to go a step further and provide more meaningful statistical results by analyzing the submitted responses in relationship to the demographics obtained from each of the examiners participating in this proficiency test. All results and statistics for this test will be outlined through graphs and charts found in the remainder of this report.

Prior to distribution of this test, all of the expected responses were determined to be either "Identification" or "Exclusion"; however, we are aware that some agencies allow for a conclusion of "Inconclusive" in their casework. In designing this Proficiency Test, there was no intention to force a participant to render a conclusion which goes beyond their considered opinion. To satisfy this option, participants were allowed to enter "Inconclusive" as a response. Due to the fact that a participant's "Inconclusive" response does not meet the assigned values, it will appear as an inconsistent response in the summary report and be incorporated as such in the statistical analysis. It will be up to each agency to decide if the participant's "Inconclusive" response qualifies as being acceptable under their policies and procedures.

RS&A strives to maintain the confidentiality of all of its clients and participants. All results are obtained and published using randomly generated test codes. RS&A will not release the identity of any participant without the written consent of the participant and/or the agency involved.

For any additional information, please contact the Proficiency Testing Coordinator at testing@ronsmithandassociates.com or call toll free at 1-866-832-6772.

Appendix 1

Test Manufacturer's Information

Spring 2020 Tenprint Proficiency Test #20201

This test consisted of four parts: pattern recognition, comparison of multiple tenprint cards, comparison of single inked fingerprints, and AFIS side-by-side comparisons to known fingerprints. The test was provided in hard copy photograph and/or digital image formats. The assigned values were determined through the ground truth information and verified through unanimous agreement during pre-distribution testing. The assigned values for each part of the test are as follows:

Part 1: Pattern Recognition

Image #	Pattern Type
1	Left Slant Loop
2	Left Slant Loop
3	Arch
4	Whorl
5	Whorl
6	Whorl
7	Right Slant Loop
8	Right Slant Loop
9	Left Slant Loop
10	Whorl
11	Right Slant Loop
12	Arch
13	Right Slant Loop
14	Whorl
15	Left Slant Loop
16	Whorl
17	Whorl
18	Whorl
19	Left Slant Loop
20	Arch

Part 2: Pre-Sentencing Packet

The following are the fingerprints of the same person:

“Most Recent Conviction” and “Prior Conviction #2”

Part 3: Unknown Deceased Identification/Exclusion

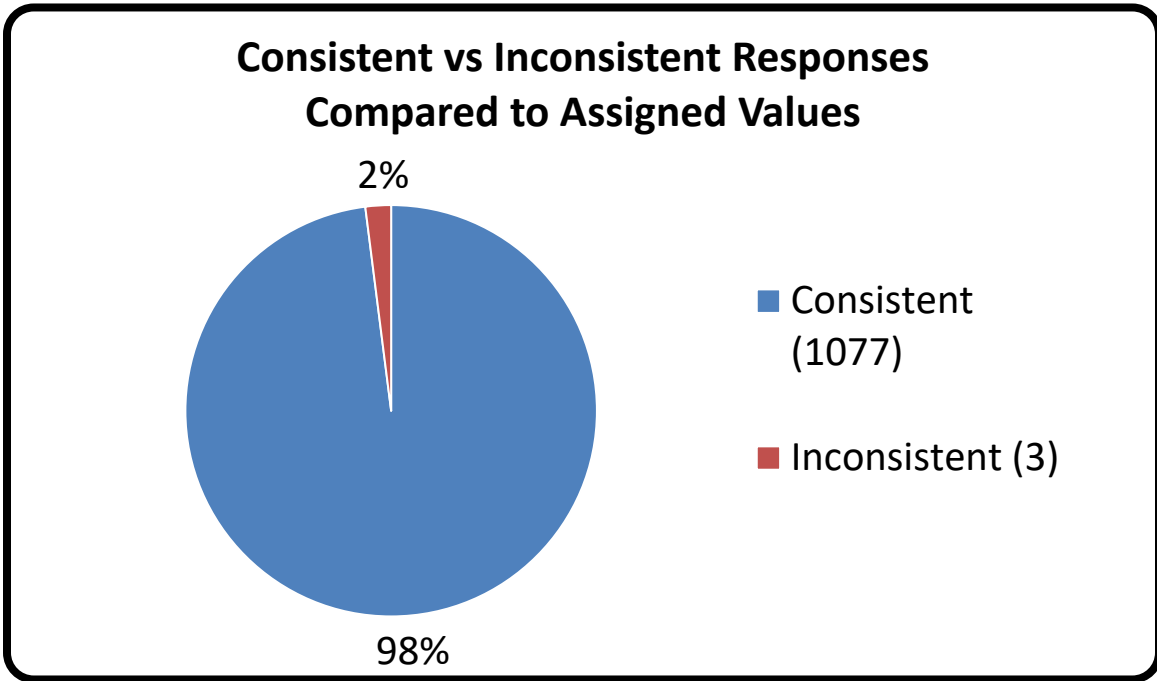
What can you conclude about the fingerprint on the driver’s license?

The known inked fingerprint appearing on the driver’s license bearing the name “Mary Cruz” **was made by** the same individual whose prints were recorded on the postmortem fingerprint card.

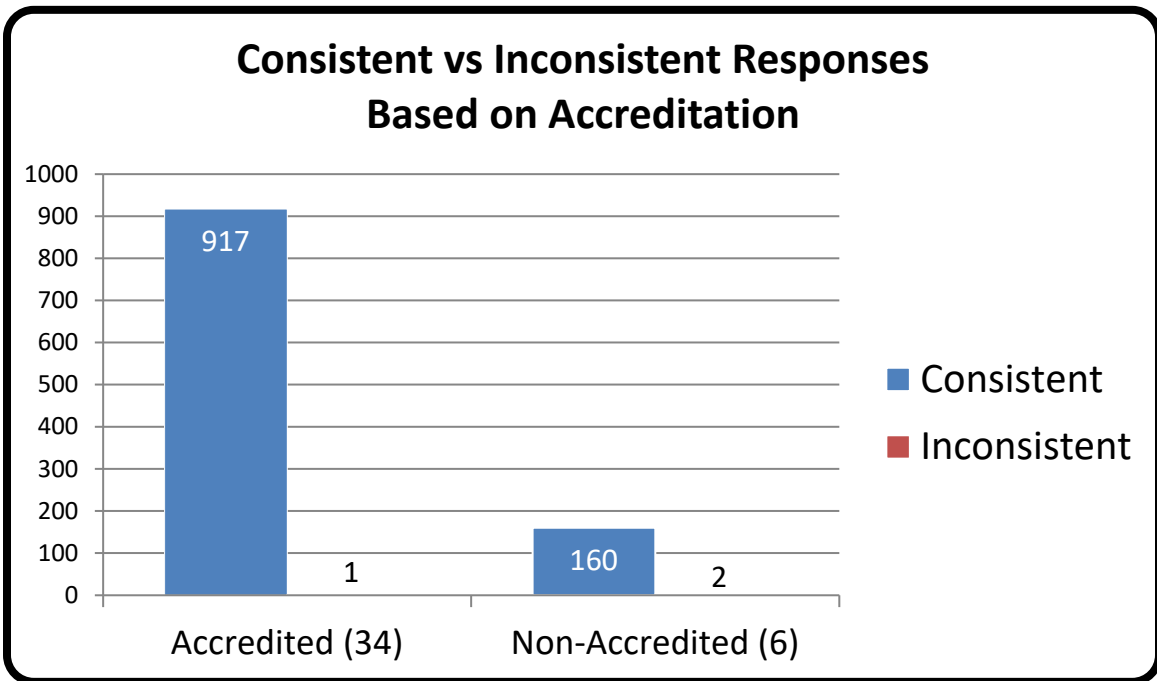
Part 4: AFIS Side-by-Side Comparisons

Comparison #	Conclusion
1	Exclusion
2	Identification
3	Identification
4	Exclusion
5	Identification

Appendix 2

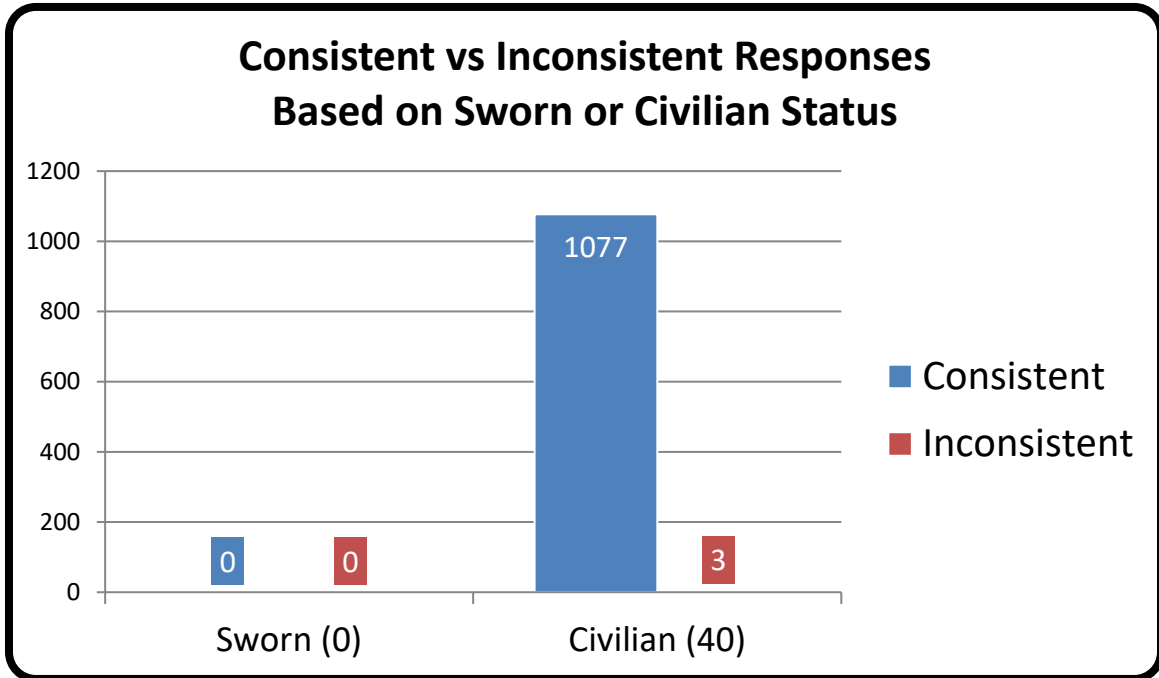


Appendix 3

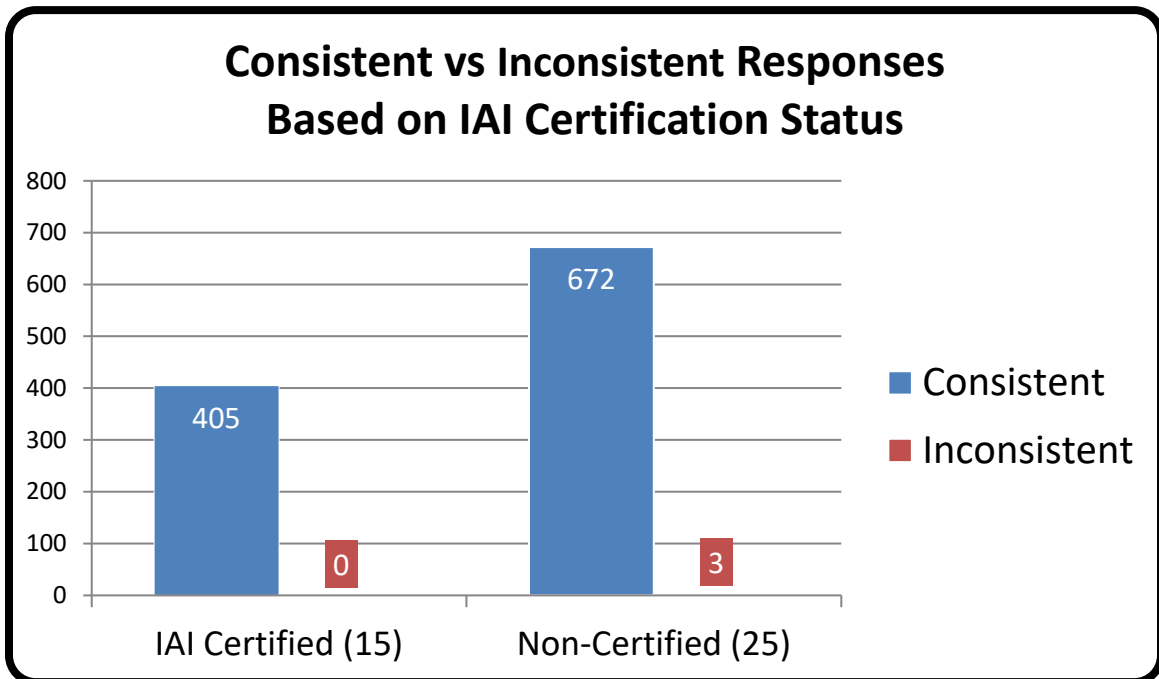


*Numerical values shown are based on **40 participant submissions, each with 27 responses, equaling 1080 total responses.** *For further information, please read *Manufacturer's Additional Observations* on the final page of this report.

Appendix 4



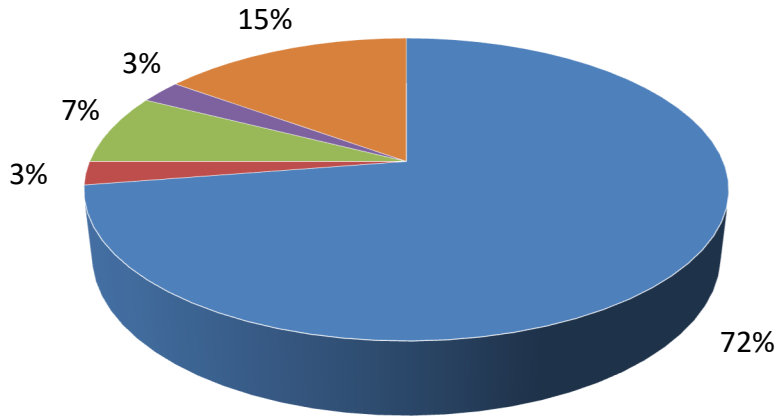
Appendix 5



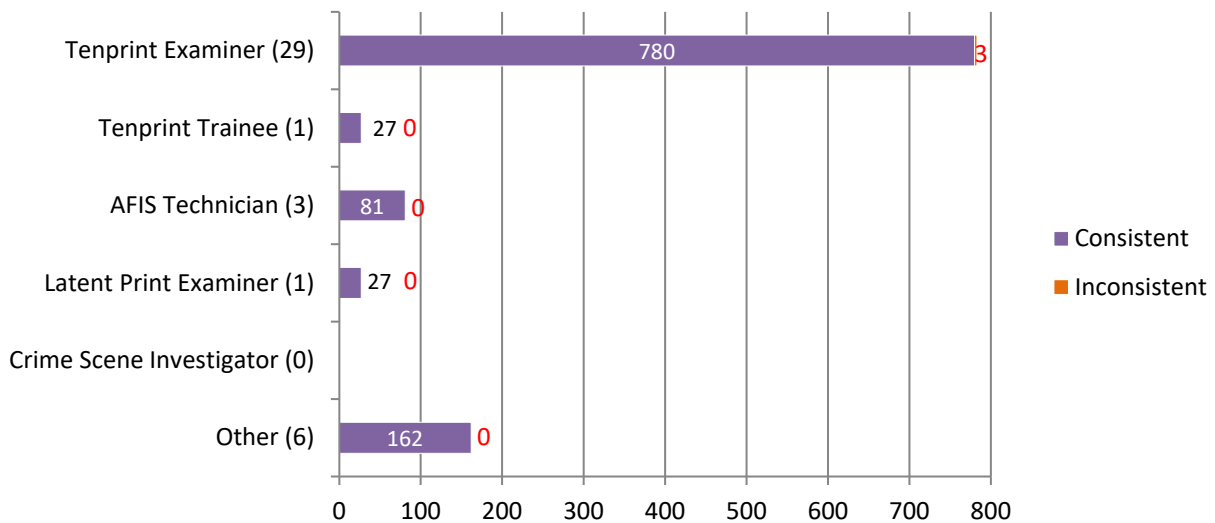
*Numerical values shown are based on **40 participant submissions, each with 27 responses, equaling 1080 total responses.** *For further information, please read *Manufacturer's Additional Observations* on the final page of this report.

Appendix 6

Percentage of Participants Based on Primary Job Position



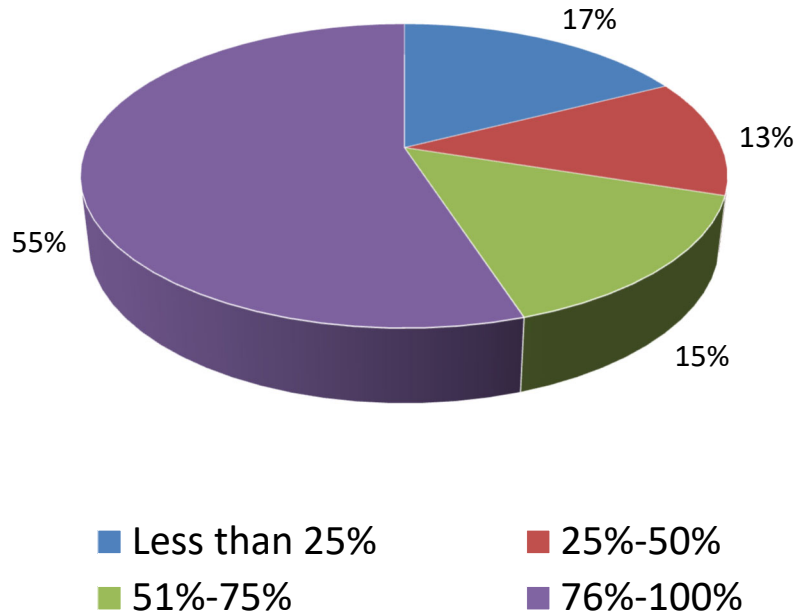
Consistent vs Inconsistent Responses Based on Primary Job Position



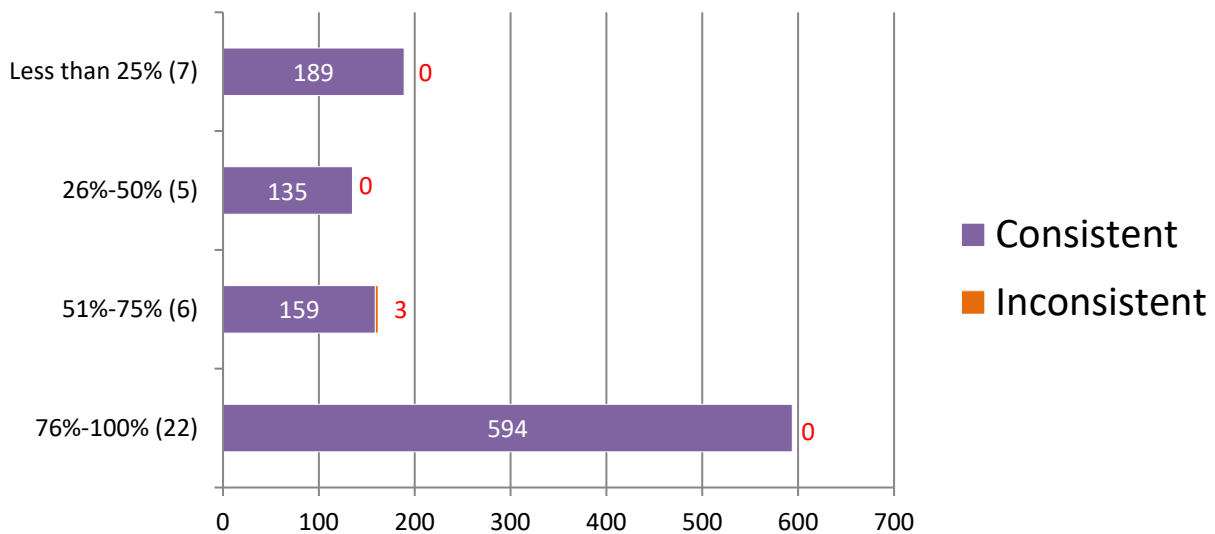
*Numerical values shown are based on **40 participant submissions, each with 27 responses, equaling 1080 total responses**. *For further information, please read *Manufacturer's Additional Observations* on the final page of this report.

Appendix 7

Percentage of Participants Based on Time Devoted to Tenprint Casework



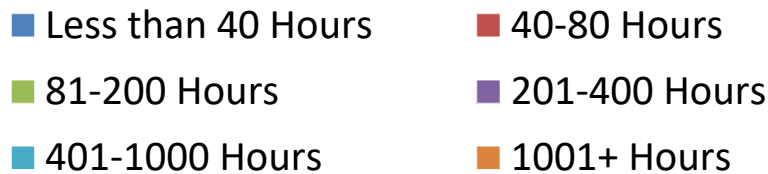
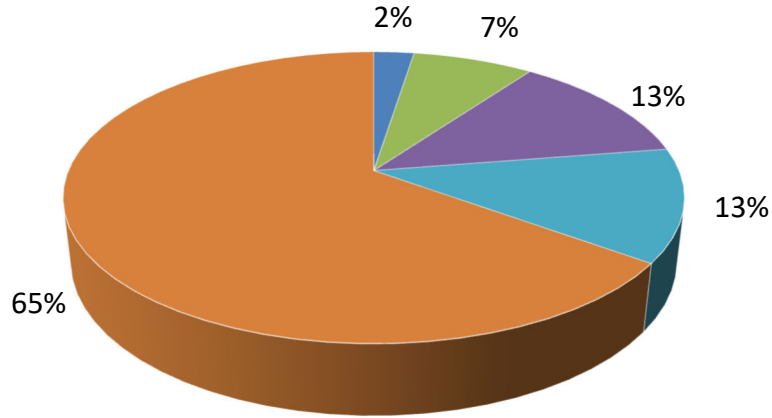
Consistent vs Inconsistent Responses Based on Time Devoted to Tenprint Casework



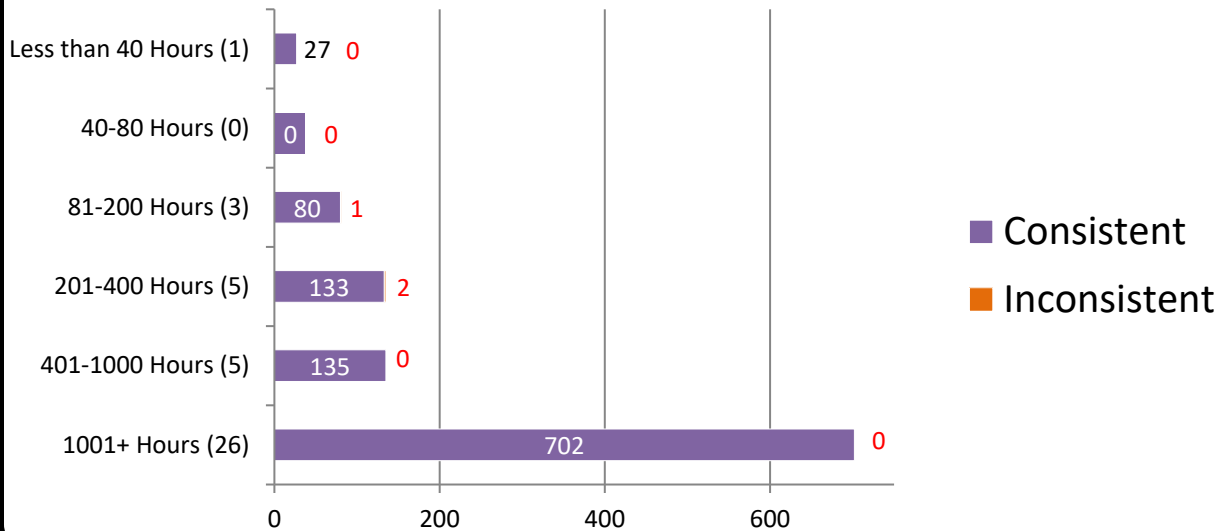
*Numerical values shown are based on **40 participant submissions, each with 27 responses**, equaling **1080 total responses**. *For further information, please read *Manufacturer's Additional Observations* on the final page of this report.

Appendix 8

Percentage of Participants Based on Hours of Tenprint Training Completed



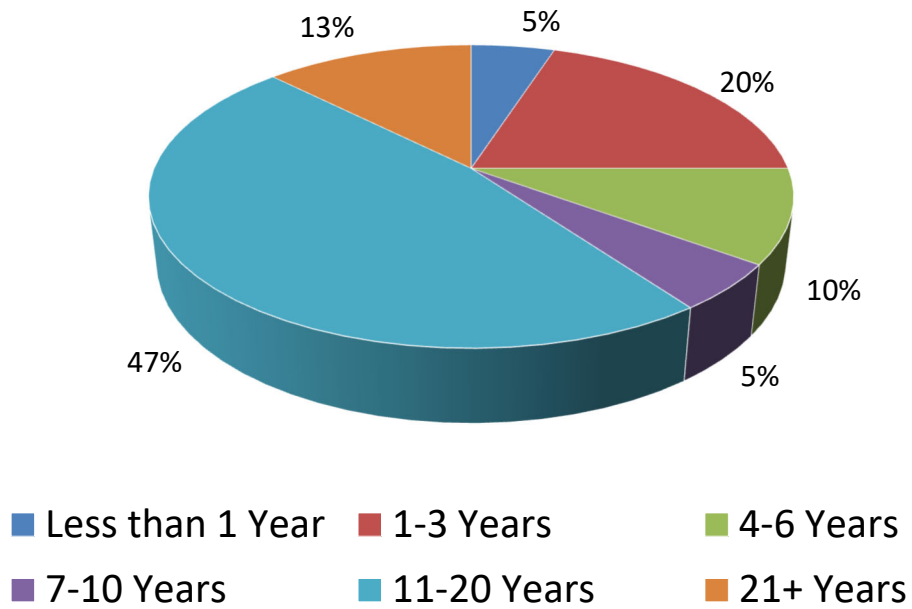
Consistent vs Inconsistent Responses Based on Hours of Tenprint Training Completed



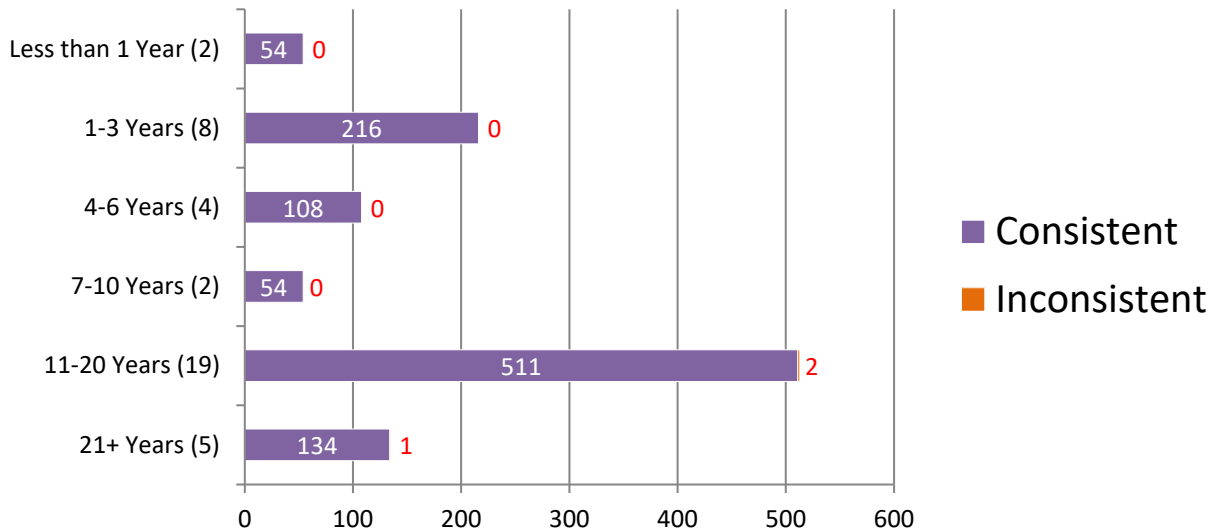
*Numerical values shown are based on **40 participant submissions, each with 27 responses, equaling 1080 total responses**. *For further information, please read *Manufacturer's Additional Observations* on the final page of this report.

Appendix 9

Percentage of Participants Based on Years of Experience in Tenprints



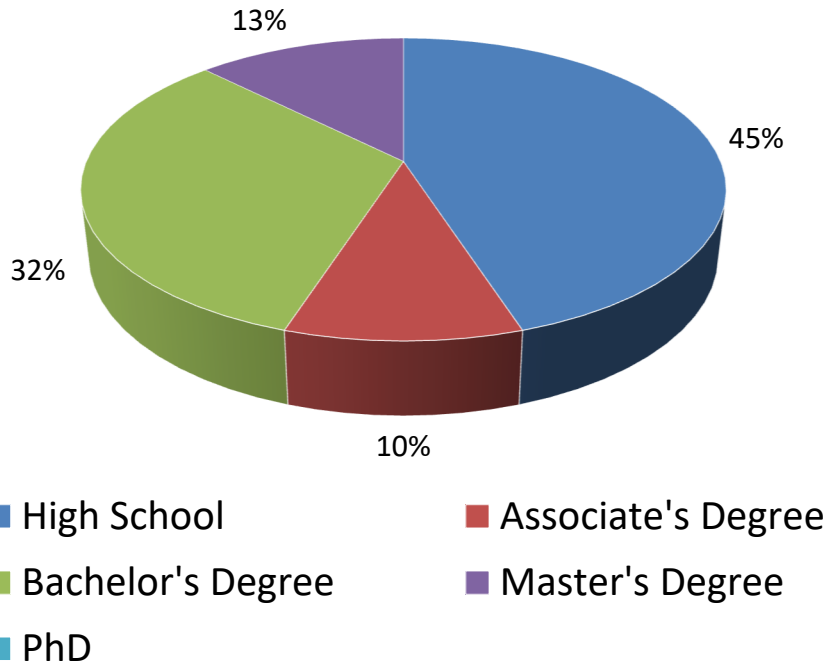
Consistent vs Inconsistent Responses Based on Years of Experience in Tenprints



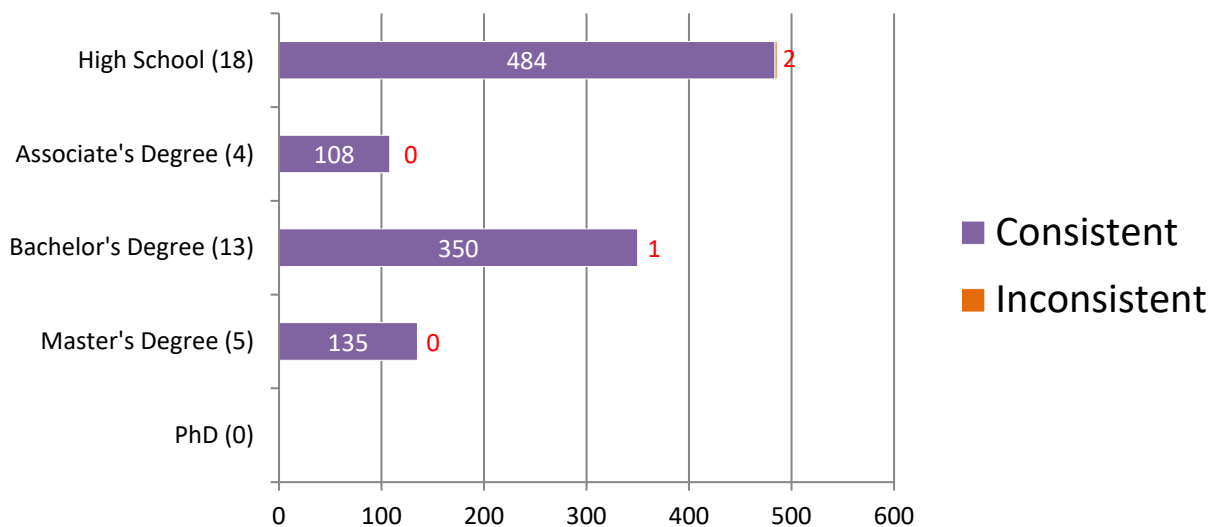
*Numerical values shown are based on **40 participant submissions, each with 27 responses, equaling 1080 total responses**. *For further information, please read *Manufacturer's Additional Observations* on the final page of this report.

Appendix 10

Percentage of Participants Based on Highest Level of Education Completed

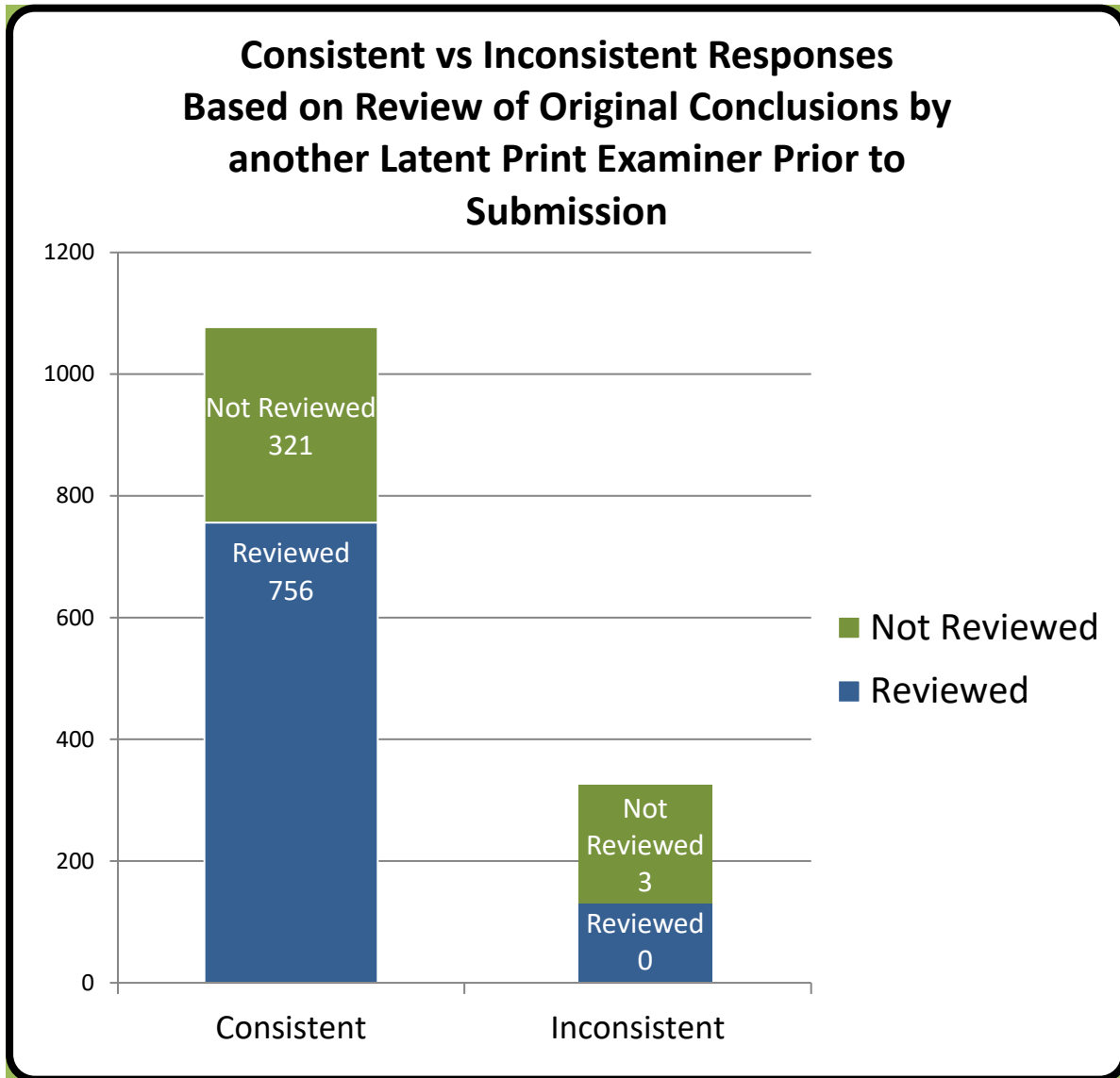


Consistent vs Inconsistent Responses Based on Highest Level of Education Completed



*Numerical values shown are based on **40 participant submissions, each with 27 responses, equaling 1080 total responses.** *For further information, please read *Manufacturer's Additional Observations* on the final page of this report.

Appendix 11



*Numerical values shown are based on **40 participant submissions, each with 27 responses, equaling 1080 total responses.** *For further information, please read *Manufacturer's Additional Observations* on the final page of this report.

Appendix 12

Participant Responses listed by Test Code

		Part 1																			
		1	2	3	4	5	6	7	8	9	10	11	12	13	14	15	16	17	18	19	20
Assigned Values		LSL	LSL	A	W	W	W	RSL	RSL	LSL	W	RSL	A	RSL	W	LSL	W	W	W	LSL	A
Test Code	4308J20201	LSL	LSL	A	W	W	W	RSL	RSL	LSL	W	RSL	A	RSL	W	LSL	W	W	W	LSL	A
	2310B20201	LSL	LSL	A	W	W	W	RSL	RSL	LSL	W	RSL	A	RSL	W	LSL	W	W	W	LSL	A
	1030P20201	LSL	LSL	A	W	W	W	RSL	RSL	LSL	W	RSL	A	RSL	W	LSL	W	W	W	LSL	A
	5590U20201	LSL	LSL	A	W	W	W	RSL	RSL	LSL	W	RSL	A	RSL	W	LSL	W	W	W	LSL	A
	6671P20201	LSL	LSL	A	W	W	W	RSL	RSL	LSL	W	RSL	A	RSL	W	LSL	W	W	W	LSL	A
	2207L20201	LSL	LSL	A	W	W	W	RSL	RSL	LSL	W	RSL	A	RSL	W	LSL	W	W	W	LSL	A
	1464W20201	LSL	LSL	A	W	W	W	RSL	RSL	LSL	W	RSL	A	RSL	W	LSL	W	W	W	LSL	A
	35S20201	LSL	LSL	A	W	W	W	RSL	RSL	LSL	W	RSL	A	RSL	W	LSL	W	W	W	LSL	A
	8390M20201	LSL	LSL	A	W	W	W	RSL	RSL	LSL	W	RSL	A	RSL	W	LSL	W	W	W	LSL	A
	9451B20201	LSL	LSL	A	W	W	W	RSL	RSL	LSL	W	RSL	A	RSL	W	LSL	W	W	W	LSL	A
	2572M20201	LSL	LSL	A	W	W	W	RSL	RSL	LSL	W	RSL	A	RSL	W	LSL	W	W	W	LSL	A
	4195R20201	LSL	LSL	A	W	W	W	RSL	RSL	LSL	W	RSL	A	RSL	W	LSL	W	W	W	LSL	A
	5049K20201	LSL	LSL	A	W	W	W	RSL	RSL	LSL	W	RSL	A	RSL	W	LSL	W	W	W	LSL	A
	440I20201	LSL	LSL	A	W	W	W	RSL	RSL	LSL	W	RSL	A	RSL	W	LSL	W	W	W	LSL	A
	7941W20201	LSL	LSL	A	W	W	W	RSL	RSL	LSL	W	RSL	A	RSL	W	LSL	W	W	W	LSL	A
	2623E20201	LSL	LSL	A	W	W	W	RSL	RSL	LSL	W	RSL	A	RSL	W	LSL	W	W	W	LSL	A
	6408Q20201	LSL	LSL	A	W	W	W	RSL	RSL	LSL	W	RSL	A	RSL	W	LSL	W	W	W	LSL	A
	669F20201	LSL	LSL	A	W	W	W	RSL	RSL	LSL	W	RSL	A	RSL	W	LSL	W	W	W	LSL	A
	4782Y20201	LSL	LSL	A	W	W	W	RSL	RSL	LSL	W	RSL	A	RSL	W	LSL	W	W	W	LSL	A
	8433M20201	LSL	LSL	A	W	W	W	RSL	RSL	LSL	W	RSL	A	RSL	W	LSL	W	W	W	LSL	A
	400L20201	LSL	LSL	A	W	W	W	RSL	RSL	LSL	W	RSL	A	RSL	W	LSL	W	W	W	LSL	A
	2684C20201	LSL	LSL	RSL	W	W	W	RSL	RSL	LSL	W	RSL	A	RSL	W	LSL	W	W	W	LSL	A
	3054L20201	LSL	LSL	A	W	W	W	RSL	RSL	LSL	W	RSL	A	RSL	W	LSL	W	W	W	LSL	A
	5946J20201	LSL	LSL	A	W	W	W	RSL	RSL	LSL	W	RSL	A	RSL	W	LSL	W	W	W	LSL	A
	8656H20201	LSL	LSL	A	W	W	W	RSL	RSL	LSL	W	RSL	A	RSL	W	LSL	W	W	W	LSL	A
	9321Y20201	LSL	LSL	RSL	W	W	W	RSL	RSL	LSL	W	RSL	A	RSL	W	LSL	W	W	W	LSL	A
	6339Z20201	LSL	LSL	A	W	W	W	RSL	RSL	LSL	W	RSL	A	RSL	W	LSL	W	W	INC	LSL	A
	7421R20201	LSL	LSL	A	W	W	W	RSL	RSL	LSL	W	RSL	A	RSL	W	LSL	W	W	W	LSL	A
	1196C20201	LSL	LSL	A	W	W	W	RSL	RSL	LSL	W	RSL	A	RSL	W	LSL	W	W	W	LSL	A
	4986Z20201	LSL	LSL	A	W	W	W	RSL	RSL	LSL	W	RSL	A	RSL	W	LSL	W	W	W	LSL	A
1459W20201	LSL	LSL	A	W	W	W	RSL	RSL	LSL	W	RSL	A	RSL	W	LSL	W	W	W	LSL	A	
3025I20201	LSL	LSL	A	W	W	W	RSL	RSL	LSL	W	RSL	A	RSL	W	LSL	W	W	W	LSL	A	
8329O20201	LSL	LSL	A	W	W	W	RSL	RSL	LSL	W	RSL	A	RSL	W	LSL	W	W	W	LSL	A	
3751J20201	LSL	LSL	A	W	W	W	RSL	RSL	LSL	W	RSL	A	RSL	W	LSL	W	W	W	LSL	A	
9383D20201	LSL	LSL	A	W	W	W	RSL	RSL	LSL	W	RSL	A	RSL	W	LSL	W	W	W	LSL	A	

3677N20201	LSL	LSL	A	W	W	W	RSL	RSL	LSL	W	RSL	A	RSL	W	LSL	W	W	W	LSL	A
2041I20201	LSL	LSL	A	W	W	W	RSL	RSL	LSL	W	RSL	A	RSL	W	LSL	W	W	W	LSL	A
2767P20201	LSL	LSL	A	W	W	W	RSL	RSL	LSL	W	RSL	A	RSL	W	LSL	W	W	W	LSL	A
9075O20201	LSL	LSL	A	W	W	W	RSL	RSL	LSL	W	RSL	A	RSL	W	LSL	W	W	W	LSL	A

	Part 2	Part 3	Part 4				
	Pre-Sentencing	Unknown Deceased	1	2	3	4	5
Assigned Values	MRC & PC2	Was made by	EXC	ID	ID	EXC	ID
4308J20201	MRC & PC2	Was made by	EXC	ID	ID	EXC	ID
2310B20201	MRC & PC2	Was made by	EXC	ID	ID	EXC	ID
1030P20201	MRC & PC2	Was made by	EXC	ID	ID	EXC	ID
5590U20201	MRC & PC2	Was made by	EXC	ID	ID	EXC	ID
6671P20201	MRC & PC2	Was made by	EXC	ID	ID	EXC	ID
2207L20201	MRC & PC2	Was made by	EXC	ID	ID	EXC	ID
1464W20201	MRC & PC2	Was made by	EXC	ID	ID	EXC	ID
35S20201	MRC & PC2	Was made by	EXC	ID	ID	EXC	ID
8390M20201	MRC & PC2	Was made by	EXC	ID	ID	EXC	ID
9451B20201	MRC & PC2	Was made by	EXC	ID	ID	EXC	ID
2572M20201	MRC & PC2	Was made by	EXC	ID	ID	EXC	ID
4195R20201	MRC & PC2	Was made by	EXC	ID	ID	EXC	ID
5049K20201	MRC & PC2	Was made by	EXC	ID	ID	EXC	ID
440I20201	MRC & PC2	Was made by	EXC	ID	ID	EXC	ID
7941W20201	MRC & PC2	Was made by	EXC	ID	ID	EXC	ID
2623E20201	MRC & PC2	Was made by	EXC	ID	ID	EXC	ID
6408Q20201	MRC & PC2	Was made by	EXC	ID	ID	EXC	ID
669F20201	MRC & PC2	Was made by	EXC	ID	ID	EXC	ID
4782Y20201	MRC & PC2	Was made by	EXC	ID	ID	EXC	ID
8433M20201	MRC & PC2	Was made by	EXC	ID	ID	EXC	ID
400L20201	MRC & PC2	Was made by	EXC	ID	ID	EXC	ID
2684C20201	MRC & PC2	Was made by	EXC	ID	ID	EXC	ID
3054L20201	MRC & PC2	Was made by	EXC	ID	ID	EXC	ID
5946J20201	MRC & PC2	Was made by	EXC	ID	ID	EXC	ID
8656H20201	MRC & PC2	Was made by	EXC	ID	ID	EXC	ID
5489R20201	MRC & PC2	Was made by	EXC	ID	ID	EXC	ID
9321Y20201	MRC & PC2	Was made by	EXC	ID	ID	EXC	ID
6339Z20201	MRC & PC2	Was made by	EXC	ID	ID	EXC	ID
7421R20201	MRC & PC2	Was made by	EXC	ID	ID	EXC	ID
1196C20201	MRC & PC2	Was made by	EXC	ID	ID	EXC	ID
4986Z20201	MRC & PC2	Was made by	EXC	ID	ID	EXC	ID
1459W20201	MRC & PC2	Was made by	EXC	ID	ID	EXC	ID
3025I20201	MRC & PC2	Was made by	EXC	ID	ID	EXC	ID
8329O20201	MRC & PC2	Was made by	EXC	ID	ID	EXC	ID

3751J20201	MRC & PC2	Was made by	EXC	ID	ID	EXC	ID
9383D20201	MRC & PC2	Was made by	EXC	ID	ID	EXC	ID
3677N20201	MRC & PC2	Was made by	EXC	ID	ID	EXC	ID
2041I20201	MRC & PC2	Was made by	EXC	ID	ID	EXC	ID
2767P20201	MRC & PC2	Was made by	EXC	ID	ID	EXC	ID
9075O20201	MRC & PC2	Was made by	EXC	ID	ID	EXC	ID

Arch=A, Right Slant Loop=RSL, Left Slant Loop=LSL, Whorl=W, Most Recent Conviction=MRC, Prior Conviction #1=PC1, Prior Conviction #2=PC2, Identification=ID, Exclusion=EXC, Inconclusive=INC, None of the above=None

Totals

	Part 1																			
	1	2	3	4	5	6	7	8	9	10	11	12	13	14	15	16	17	18	19	20
Assigned Values	LSL	LSL	A	W	W	W	RSL	RSL	LSL	W	RSL	A	RSL	W	LSL	W	W	W	LSL	A
Consistent Responses	40	40	38	40	40	40	40	40	40	40	40	40	40	40	40	40	40	39	40	40
Inconsistent Responses	0	0	2	0	0	0	0	0	0	0	0	0	0	0	0	0	0	1	0	0
Percentage of Consistent Responses	100	100	98	100	100	100	100	100	100	100	100	100	100	100	100	100	100	99	100	100

	Part 2	Part 3	Part 4				
	Pre-Sentencing	Unknown Deceased	1	2	3	4	5
Assigned Values	MRC & PC2	Was made by	EXC	ID	ID	EXC	ID
Consistent Responses	40	40	40	40	40	40	40
Inconsistent Responses	0	0	0	0	0	0	0
Percentage of Consistent Responses	100	100	100	100	100	100	100

Participant's Additional Comments

Test ID	Comments
5590U20201	1,4- exclusions, 2,3,5-Identifications-plotted ridge characteristics for reference.
6339Z20201	Part 1, number 18 - I am not sure if there is a proper re-curve on the bottom of the loop.

Manufacturer's Additional Observations

Based upon a review of the all submitted responses, the following observations were noted:

1. Regardless of accreditation status, civilian or sworn status, IAI certification status, primary job position, the amount of time devoted to Tenprint examination, the number of hours of formal training in Tenprint examination, the years of experience, the level of education or participants' having their responses reviewed prior to submission; participants performed equally well on the test.

Authorized by: Ron Smith, President

Issue Date: July 20, 2020