

**RS&A**



INC.

# RS&A AT GLANCE

## FORENSIC SERVICES OFFERED

- Forensic Training Services
- Forensic Consulting Services
- Quality Management Services
- Attorney Consulting Services

## FORENSIC PRODUCTS OFFERED

- The International Latent Print Examiner Training Academy
- Proficiency Tests
- Multi-level Competency Testing for LPEs
- Training Exercises

## WE ARE ACCREDITED

ISO/IEC 17025 & ISO/IEC 17043

## OUR FULL-TIME TEAM

We employ full-time forensic specialists and business professionals to provide you with a fully developed and carefully designed business management team.

## STRONG PARTNERSHIPS

RS&A maintains contractual relationships with an excess of 100+ professionally certified forensic specialists in a wide range of forensic disciplines.

## RS&A HEADQUARTERS LABORATORY

Located in Collinsville, MS.



**RS&A** is a team of forensic scientists, business professionals, educators and IT experts that works in unity to develop industry changing forensic products and services.

### **OUR COMMITMENT TO YOU**

Our commitment to you and your agency is genuine. We don't deserve your business if we can't provide the services we advertise to your satisfaction. Before our company ever drew its first breath, the firm decision was made that we would always seek to do God's will in our business dealings and our lives. We have strived to do just that and have been blessed both as a company and as individuals.

RS&A has a proven track record of dozens upon dozens of successful contracts with federal, state, and local agencies and private entities. We do what we say we will do.

RS&A has grown significantly since our incorporation in 2002, and the future is bright indeed. There will always be a need for high-quality forensic services. By working with government agencies and other related private entities, we can continue to be an integral part of the solution in criminal and civil justice communities.

**Accurate, timely, fair, objective, efficient, cost effective**

These are not just words but descriptions of our commitment to each of our clients. It is the same level of commitment that RS&A will bring to you and your agency if provided the opportunity.

### **COMPANY MOTTO**

We do the right thing because it is the right thing. We need no other reason!

### **OUR COMPANY WEBSITE**

Everything you need to know about RS&A services and products is on our company website. Visit us online to learn more about how RS&A can help you and your agency today!

**[www.RonSmithandAssociates.com](http://www.RonSmithandAssociates.com)**

# RS&A CLASSROOM TRAINING

## OUR TRAINING MISSION

We strive to provide affordable, high-quality, "hands-on" forensic training services to local, state, and federal agencies across North America and beyond by implementing and maintaining a carefully designed sequential modular training approach. In addition, our goal is to walk alongside students of all ability levels and see them advance to a state wherein they can become professionally certified by the International Association for Identification.

## A HISTORY OF SUCCESS

Since 2002, RS&A has provided high-quality forensic training courses throughout the United States and worldwide. By building a team of internationally regarded instructors to work hand in hand with our full-time Training Division support staff, RS&A has developed a delivery system second to none in the industry. Over 30,000+ students have received training from RS&A, and that number grows significantly every year.

**This training has been brought to forensic specialists in all fifty states and continues to be the primary resource for forensic training in North America.**

### WHAT ARE THE KEYS TO THE RS&A TRAINING PROGRAM SUCCESS



- "TOP GUN" Instructors
- Professional Support Staff
- Cost Efficiency
- Long Term Relationships with MANY Hosting Agencies
- Courses that are I.A.I. Approved to Meet Certification Requirements
- Access to High Quality Training Materials which are current
- "Hands-On" Approach to Learning
- Sequential Training Programs
- Regional Availability

For complete training details visit us online at:

[www.RonSmithandAssociates.com](http://www.RonSmithandAssociates.com)

or email our training division at:

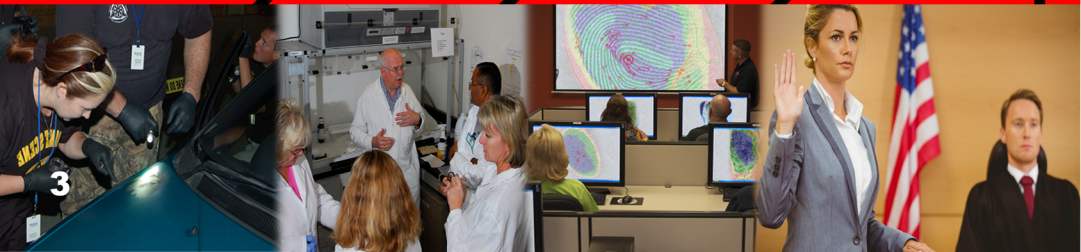
[training@ronsmithandassociates.com](mailto:training@ronsmithandassociates.com)

CRIME SCENE

PROCESSING

EXAMINATION

COURTROOM



# RS&A SEQUENTIAL TRAINING COURSES

For maximum benefit, the following courses should be taken in the sequences noted below.

## FRICION RIDGE (LATENT) CURRICULUM

1. Introduction to the Science of Friction Ridge Examination - 40 Hours
2. Palm Print Comparison Techniques - 24 Hours
3. Essential Ridgeology Concepts - 40 Hours
4. Latent Print Search and Comparison Techniques - 40 Hours
5. Courtroom Testimony Techniques - Success Instead of Survival - 16 Hours
6. Examination of Simultaneous Impressions - 24 Hours
7. Comparison of Plantar Friction Ridge Impressions - 16 Hours
- 7A. Friction Ridge Symposium: Palms, Plantars, Tips and Toes - 40 Hours
8. Advanced ACE-V Applications for Fingerprint Examiners - 40 Hours
9. Scientific Analysis: From the Laboratory to the Witness Stand - 40 Hours
10. Understanding Exclusion and Sufficiency Decisions - 36 Hours
11. Complex Latent Print Examinations - 40 Hours
12. Practical Answers to Challenging Questions in the Courtroom - 24 Hours
13. Incorporation of Technology into the ACE-V Process - 24 Hours
14. Finding Latent Evidence with Chemistry & Light - 32 Hours
15. Forensic Digital Imaging for Latent Print Examiners: Extend Your Reach - 32 Hours
16. Advanced Sequential Processing - A Hands-on Workshop - 32 Hours
17. IAI Latent Print Certification Test Preparation Training - 40 Hours

## FOOTWEAR & TIRE TRACK CURRICULUM

1. Detection, Documentation and Recovery of Footwear & Tire Track Evidence - 24 Hours
2. The Analysis and Comparison of Footwear Impression Evidence - 36 Hours

## COURTROOM TESTIMONY CURRICULUM

1. Courtroom Testimony Techniques: Success Instead of Survival - 16 Hours
2. Scientific Analysis (ACE-V): From the Laboratory to the Witness Stand - 40 Hours
3. Expert Witness Testimony for Laboratory Analysts - 16 Hours
4. Practical Answers to Challenging Questions in the Courtroom - 24 Hours

## FRICION RIDGE (TENPRINT) CURRICULUM

1. Introduction to the Science of Friction Ridge Examination - 40 Hours
2. Essential Ridgeology Concepts - 40 Hours
3. Palm Print Comparison Techniques - 24 Hours
4. Courtroom Testimony Techniques - Success Instead of Survival - 16 Hours
5. Friction Ridge Examination for Tenprint Examiners - 24 Hours
6. Scientific Analysis: From the Laboratory to the Witness Stand - 40 Hours

## CRIME SCENE CURRICULUM

1. CSI Physical Evidence - Processing the Crime Scene - 16 Hours
2. Fundamentals of Crime Scene Examination and Evidence Collection - 40 Hours
3. Digital Crime Scene and Evidence Photography - 24 Hours
4. Forensic Examination of Violent Crime Scenes - 24 Hours
5. Finding Latent Evidence with Chemistry & Light - 32 Hours
6. Advanced Sequential Processing - A Hands-on Workshop - 32 Hours
7. Fingerprint and Trace Evidence Detection and Collection on Skin - 32 Hours
8. Taking the Crime Scene into the Interrogation Room - 16 Hours
9. Improved Photography of Latent Impressions at the Crime Scene

# RS&A ONLINE TRAINING



**Anywhere...Anytime...Anyplace!**



## **Palm Prints Searching Smart**

Ron Smith | 40 hours | \$600.00 | 90 Day Access



## **Crime Scene and Evidence Photography**

Scott Campbell | 36 hours | \$600.00 | 90 Day Access



## **Common Sense Digital Imaging for LP Examiners**

Matthew Marvin | 16 hours | \$350.00 | 30 Day Access



## **Essential Camera Operations and Controls**

Scott Campbell | 16 hours | \$350.00 | 30 Day Access



## **Social Media Fingerprints and Other Inadvertently Photographed Ridge Detail**

Tim Fayle | 8 hours | \$300.00 | 30 Day Access



## **Ethical Considerations in Latent Print Examination and Testimony**

John Black | 4 hours | \$100.00 | 30 Day Access



## **How Smart People Manage LP Examiners by Exposing Some Dumb Ideas**

Ron Smith | 4 hours | \$100.00 | 30 Day Access



## **Various LIVE Online Training**



**RS&A is developing new online training courses, and our online training catalog is growing. Scan the QR Code to access the latest online training course catalog.**

# RS&A Training Exercises

It is understood that the best preparation for casework is training and performance through the repetition of training exercises.

RS&A comparison exercises are designed to help grow or enhance the comparison ability of an examiner by providing them with comparison time. We offer various types of training exercises in the following disciplines:

- LATENT PRINT
- PALM PRINT
- TENPRINT
- FOOTWEAR
- FOOTPRINT
- TIRE TRACK



**SCAN QR CODE  
FOR A COMPLETE  
LIST OF RS&A  
TRAINING  
EXERCISES.**

## Searching Smart Playing Cards

Have fun and learn at the same time.



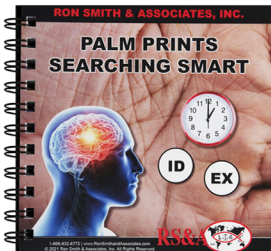
- Contains 52 Searching Smart Clues for LP Examiners
- Approved study material by the I.A.I. LP Cert Board
- Standard 54 card poker deck with plastic hinged case



**BUY NOW!**

## Palm Print Searching Smart Book

Use as training material OR as a desk reference.




- Contains over 100 palm print searching smart clues.
- Approved study material by the I.A.I. LP Cert Board
- Authored by Ron Smith
- High quality 6"X 6" book




**BUY NOW!**


# THE INTERNATIONAL LATENT PRINT EXAMINER TRAINING ACADEMY


This **20-week training program** is designed to provide agencies with a Latent Print Examiner who is trained to competency. This academy, with 800 hours of formal training, will produce graduates who are capable of performing "supervised casework," and once experience requirements are met, they will be ready to apply for IAI Latent Print Certification.

 **Where are you going to find fully trained Latent Print Examiners to fill your future vacancies?** There are always more vacant positions than there are qualified LPEs to fill them.

**Are you willing to invest the 1-2 years needed for your senior staff members to apprentice new trainees to the point where they can contribute to case production?** If so, what's the REAL cost of this approach, and will you then find yourself in a continual training mode?

 **We understand** your staffing needs, and we believe there is a better way. RS&A is launching another session of the International Latent Print Examiner Training Academy program, which will begin in the fall. This is a carefully designed, intense 20-week training program that will produce a Latent Print Examiner who can immediately make a substantial impact on your operation.

 **Students** will be required to meet stringent educational, ethical and visual acuity standards to be accepted into the program. Throughout the academy, they will be routinely tested to ensure their competence in each module of instruction. They will be ready for supervised casework as soon as they arrive at your agency and will have already met or exceeded all requirements for IAI Latent Print Examiner certification, with the possible exception of work experience. They will have already passed written examinations and comparison practicals, with some being more difficult than the actual IAI CLPE examination.

 **RS&A is internationally known as the premier forensic identification training company,** and we have successfully trained literally hundreds upon hundreds of latent print examiners to competency through the efforts of our cadre of world-class instructors. This academy is simply a reconfiguring of what we have been doing for years. We know latent prints, and we know training!

 **The academy is held at the Meridian Community College Workforce Development Training Facility,** a new state-of-the-art training facility located in Meridian, MS. This facility offers spacious classrooms, new computer labs, and a break room. During evidence processing classes, students will be in the RS&A headquarters laboratory in Collinsville, MS. The RS&A Collinsville lab offers students a chance to work within an operating forensic laboratory where they will learn basic and advanced processing techniques and laboratory safety procedures. Mock court training is held in an actual courtroom setting where students gain invaluable courtroom experience.





**Students will be provided information about the host hotel**, which provides each student with their own room. Each room offers access to Wi-Fi internet, cable TV, housekeeping services, a washer and a dryer, indoor pool facilities, and a fitness center. A special discounted rate is given to each academy student who registers at this hotel. Transportation for each student is highly recommended and is the sole responsibility of the student or sponsoring agency.



**The per-student cost of the International Latent Print Examiner Training Academy is \$19,500.00**, which is far less than what it would cost your agency to complete this same level of training utilizing in-house case working analysts. Your agency will get a trained LPE in a fraction of the time it takes to train an LPE in-house. How is this possible? Academy students are in a full-time dedicated teaching/learning academy without daily distractions. Students have full access to a team of highly skilled and fully committed RS&A staff dedicated to ensuring your employee's success.



**The Future is Bright!** It is anticipated that there will continue to be additional sessions of the academy. We have the facilities and instructors to accommodate the training needs of the forensic industry.



### SAMPLE ACADEMY SCHEDULE

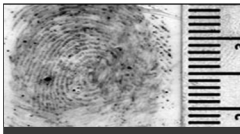
- Week 1 - Introduction to the Science of Friction Ridge Examination
- Week 2 - Essential Ridgeology Concepts
- Week 3 - Comparison and Evaluation Skill Development
- Week 4 - Palm Print Comparison Techniques
- Week 5 - Basic Latent Print Processing Methods
- Week 6 - Evaluation of Latent Finger, Palms, Tips, Joints, and Sufficiency
- Week 7 - Digital Photography Basics: Copy Stand Photography
- Week 8 - Advanced Latent Print Processing
- Week 9 - Digital Imaging for Latent Print Examiners
- Week 10 - AFIS Minutia Plotting, Recording of Known Impressions
- Week 11 - Courtroom Testimony Techniques; Success Instead of Survival
- Week 12 - Comparison and Evaluation Skill Development / Bias and Ethics
- Week 13 - Exclusion and Inconclusive Decisions
- Week 14 - Comparison and Evaluation Skill Development
- Week 15 - ACE-V Methodology, Documentation Best Practices, and Conclusions
- Week 16 - Understanding Simultaneous and Distorted Impressions
- Week 17 - Complex Latent Print Examinations
- Week 18 - Friction Ridge Expert Witness Testimony Techniques
- Week 19 - IAI Pre-Certification Test Preparation Training
- Week 20 - Finals Week, Oral Boards, and Graduation Exercises

# RS&A PROFICIENCY TESTS

## WHY USE RS&A PROFICIENCY TESTS?

RS&A has become an industry leader in the science of impression evidence examination. We are now using our experience and knowledge to bring to you proficiency tests that far surpass any test on the market today.

### DISCIPLINES THAT ARE NOW AVAILABLE FOR PURCHASE



**LATENT PRINT  
COMPARISON**



**LATENT PRINT  
PROCESSING**



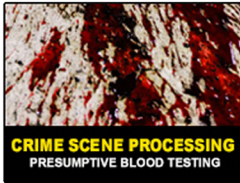
**TENPRINT  
COMPARISON**



**FOOTWEAR  
COMPARISON**



**TIRE TRACK  
COMPARISON**



**CRIME SCENE PROCESSING**  
PRESUMPTIVE BLOOD TESTING



**CRIME SCENE PROCESSING**  
LATENT PRINT PROCESSING



**CRIME SCENE PROCESSING**  
SHOOTING INCIDENT DOCUMENTATION

### SUPERIOR TEST QUALITY

Proficiency Test quality has long been an issue with some proficiency test providers. You can rest assured that RS&A Proficiency Tests will provide participants with original high-resolution images, high-quality printing, and relevant, high-quality test samples.

**As examiners, we know the importance of getting high-quality proficiency tests when a career and reputation are on the line.**

### MEANINGFUL & ACCURATE RESULTS

We are keenly aware that the statistics contained in published Proficiency Test Results can be used properly or misused by naysayers of the impression evidence sciences. In recent years, these misleading summary results have been used as a tool for the defense bar to attack unsuspecting forensic identification specialists. It is only through a review of the test results in relation to experience, certifications and training of the participants, that the published results can become meaningful and truly representative.

# PROFICIENCY TESTING

*Built by Examiners for Examiners*

## EASY TESTING PROCESS

- Use the RS&A website to select and purchase the tests online.
- Follow the provided instructions to complete participant testing.
- Submit test results via the online RS&A Results Entry Portal.
- Receive your individual results in a PDF file sent via email.
- Get complete test cycle results using our final summary report.

## UPCOMING TEST CYCLES & DATES

Proficiency Test cycles and cycle dates are posted online.

**To view all dates and cycles:**

1. Scan QR
2. Click: Test Discipline
3. Click: Test Cycles & Dates



**SCAN FOR PT  
CYCLES & DATES**

## DOWNLOAD RS&A PT SAMPLES

**Did you know you can download a PDF sample document of each proficiency test we offer?**

Inside the document, you will find:

- Sample images or photos of actual test materials.
- Samples of the individual, manufacturer, and summary reports.
- Sample instruction sheet.



**SCAN FOR PT  
SAMPLES**

## WE ARE ACCREDITED

**RS&A proficiency tests are accredited to ISO/IEC 17043 standards.**



# FORENSIC CONSULTING SERVICES



## NEED A LITTLE HELP?

We Specialize in Providing Custom Solutions to Unique Forensic Problems.

As the demands of forensic units continue to escalate, innovation is the key, and **RS&A has developed more customized solutions for agencies than any other forensic identification service provider.** Our team of management experts can sit down face to face with your staff or via online video if preferred, listen to your needs, and develop a plan of action tailored to your situation, no matter the size or complexity. RS&A specializes in providing customized solutions to unique forensic problems, regardless of the forensic discipline involved. Depending on the specific need, the solution can include either on-site or off-site components or a combination of both.

Our forensic experts can evaluate your evidence, conduct any comparisons required, prepare your latent prints for automated searching, launch AFIS searches against your local database, if authorized, or even launch automated searches against the FBI Next Generation IAFIS, once approved by your state AFIS administrator. You will receive electronic media deliverables, including 1000 PPI images, electronic copies of all worksheets, and final reports.

### CONSULTING OPTION 1: ON-SITE (Your Facility)

**Backlog Reduction & Technical Review Services are available in the following forensic disciplines:**

- FIREARMS
- DRUG CHEMISTRY
- TOXICOLOGY/BAC
- SEROLOGY/DNA
- TOOLMARKS
- TRACE EVIDENCE
- LATENT PRINTS
- FOOTWEAR
- TIRE TRACKS

### CONSULTING OPTION 2: YOU CAN SEND YOUR CASEWORK TO US

**Submit your casework directly to one of our accredited laboratories. Remote services are available in the following forensic disciplines:**

- LATENT PRINTS
- FOOTWEAR
- TIRE TRACKS



**RS&A COLLINSVILLE, MS  
HEADQUARTERS LABORATORY  
IS ACCREDITED TO  
ISO/IEC 17025 STANDARDS**

# BACKLOG KILLING YOU?

We specialize in... ~~BACKLOG REDUCTION~~  
**ELIMINATION**

**Sounds impossible, right? IT IS NOT!** RS&A has developed and field tested a forensic business model which has worked extremely well in aiding pattern evidence units to significantly reduce, and in some cases totally eliminate their backlog of casework. The concept is simple **IF** you have the business knowledge coupled with the forensic management experience necessary to understand the problem, design a solution and implement a plan.

Not all forensic units or laboratories have a backlog, and the key to our model is finding the best forensic scientists from these labs, coupling them with RS&A project managers, and deploying them as part of an "A-Team" for 8-10 days wherever they are needed most. By acquiring the short-term services of these fully credentialed forensic scientists who currently work in ISO accredited laboratories, RS&A is able to put together rotating teams of some of the most experienced forensic experts in our industry. They are able to use their comp time, vacation time, or the dreaded new category, "furlough time", to work on these short-term projects for RS&A. They can do so without having to have their own professional liability insurance coverage, because they are completely covered under the professional insurance package offered by RS&A.

Our record of success in past endeavors using this time-proven approach now enables RS&A to expand these backlog elimination services to all forensic disciplines.

**Want to talk? Call us today: 1-866-832-6772**



# MULTI-LEVEL COMPETENCY TESTING for Latent Print Examiners

## ONE SIZE DOES NOT FIT ALL!

Competency is not a stagnant, unchanging entity. All forensic specialists are expected to grow in skill level throughout their career, and a "one-size fits all" competency testing concept simply does not meet the need of today's forensic community.

From screening potential trainees to ensuring that your more "senior" LPEs can still make the tough calls, and numerous career stages in between, RS&A has designed fair and thorough competency examinations to help answer your questions.



### What makes these tests so unique?

- Latent Print Examiners design them for Latent Print Examiners.
- A panel of CLPEs thoroughly reviews them before release.
- The original latent and known print images have been captured at 1000 PPI.
- The hard copy photographs you will receive are all rendered at 1000 dpi on exceptionally high-quality photo printers.

## Level I - Pre-Employment Applicant Screening

Whether you are hiring a trainee or a more experienced examiner, you need to know if it is worth your valuable time, effort, and money to bring them on board. They have to be able to discriminate between minute forms, shapes, and details to succeed in this business. Visual acuity testing is remarkably effective for assessing these abilities and will provide critical information to assist your hiring decision.

## Level II - Pre-Supervised Casework Evaluation

There is a legitimate need for latent print unit managers to have their trainees externally evaluated before approving them for supervised casework. This outside assistance removes any subjectivity the trainer may naturally have after working closely with a trainee for an extended time. In addition, this would mitigate the potential for a trainee to advance prematurely to cope with a mounting backlog. RS&A can readily and reliably provide this valuable objective assistance because, quite frankly, we "don't have a dog in the fight" – we want you to be assured of your trainee's status!

**SCAN QR CODE**  
for complete competency test details  
and online buying options.



### **Level III - Case Working Latent Print Examiner**

This test is designed with several applications in mind. First, the test can evaluate an examiner at the end of their training program before being approved for independent casework. Second, this Level 3 module could augment your current proficiency testing program, particularly in a discrepancy between your lab's results and those of the proficiency test provider. Before resuming casework, a third use could be to reevaluate an examiner – who has completed a particular assignment (such as an overseas deployment). You may also opt to supplement your internal continuing education program if training funds are too scarce to justify conference attendance.

### **Level IV - Pre-IAI Certification**

These tests are designed to determine if an examiner is prepared to successfully pass the International Association for Identification Certified Latent Print Examiner test. Studying and completing practice comparisons are keys to passing the certification test. These pre-tests are particularly advantageous for an examiner who's primary responsibility does not involve latent print comparisons or if it has been a while since the examiner has been able to attend a comparison intensive training course.

### **Level V - Supervisory LPE Pre-Promotion Testing**

This testing module is designed to help you find the right candidate to assume either a supervisory or technical lead position. There is a direct correlation between the overall quality of a latent print unit and its leader's technical skills/abilities. Thus, it is mission-critical in today's forensic environment that you hire the examiner who will reliably lead your unit for years to come. Anything less won't cut it!

### **Level VI - Senior Latent Print Examiner Testing**

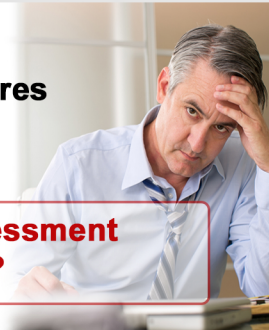
There are many latent print examiners out there with 25+ years of experience. Their knowledge, skills, and abilities are foundational for the continuing function of their latent print units, as they are essential in training future generations of examiners. They offer guidance and insight that can't be found in any textbook or training manual. However, it is well-known that one's eyesight and visual acuity may diminish over time, which must be addressed. After all, you need to know that your most seasoned examiner can still make the proper decisions on those tough comparisons.

# RS&A QUALITY MANAGEMENT SERVICES

## CONTRACT QUALITY MANAGEMENT

**Write Documents**  
**Implement Policies & Procedures**  
**Perform a Self-evaluation**

**Preparing for an accreditation assessment  
is just that easy...OR IS IT?**



Accredited forensic laboratories are required to appoint a staff member as quality manager (however named). This individual is responsible for ensuring that the management system related to quality is implemented and maintained. There are times when agencies need temporary assistance with this critical position due to an unexpected vacancy, a new or inexperienced quality manager, or a lack of resources.

You can now take advantage of RS&A's quality management knowledge and experience to benefit your lab. Contract with RS&A and let us manage quality in your agency.

### **Why contract with an RS&A Quality Manager?**

**We have experienced quality management personnel.**

**We have successfully worked with many agencies  
to achieve accreditation.**

**We have experience with ISO/IEC 17020, 17025, and 17043.**

**We can help your organization achieve  
this benchmark of excellence.**

**We can help you with any aspect of quality  
management; no job is too big or too small.**

**It IS easy with RS&A.**





# RS&A ONLINE VISUAL ACUITY ASSESSMENT



## WHAT IS VISUAL ACUITY?

**Sharpness of vision, measured by the ability to discern shapes, colors, and minute differences according to a fixed standard.**

### PURPOSE

Is your agency planning on hiring a trainee to fill a vacant latent print examiner position? How do you know if they have the ability or skill set to do the job? An applicant for this type of position must discriminate between minute differences in forms, shapes, and details to succeed in this business. It can be highly frustrating to hire someone for a position only to learn that they cannot do the job a year into training. Most agencies do not have the time or resources to make this hiring blunder. So, why not take the guesswork out of the process?

### CONTENT

This test has been designed to evaluate your applicant's visual acuity skill set. The skills being assessed in this one-hour twenty-minute test include the ability to rotate, inspect, and modify an image mentally. The ability to determine differences in curvatures, widths, details, distortion, and orientation of images. The ability to distinguish between different color shades that is commonly seen in latent print casework.

### EXPECTATIONS

RS&A has extensive experience conducting visual acuity testing. We have learned that the results of this testing have a tremendous predictive value on their success in a latent print training program. If they score well on the assessment and are highly motivated, you should expect them to be valuable assets to your team. Conversely, poor performance is a reliable indicator that you should move on to another applicant. It's that simple!

### HOW IT WORKS

- Validated web-based visual acuity assessment.
- Assessment is designed to be proctored by the administering agency.
- Auto scoring for instant assessment score upon submission.
- Instant detailed applicant report sent via email.
- Each submission will generate an assessment PDF sent immediately to the proctor's email address.

**SCAN the QR Code for complete assessment details, review the validation study PDF or purchase the RS&A Online Visual Acuity Assessment.**



# RON SMITH & ASSOCIATES, INC.

# FOOTWEAR SERVICES

We all look for ways to stretch the almighty dollar in times of budgetary hardships. When faced with losing an experienced examiner and having to hire or train someone new, there are some hard questions that you should be asking:

## **What are the chances of hiring an IAI Certified Footwear Examiner (CFWE)?**

**Does your caseload justify the costs associated with training someone to competency and ultimately certification?**

### **FOOTWEAR CASEWORK SERVICES:**

Is your agency under a hiring freeze or needing experienced full-time or part-time help? RS&A can be the short-term or long-term solution you need.

- All cases are worked by an IAI Certified Footwear Examiner (CFWE)
- All cases are technically and administratively reviewed by a CFWE
- A CFWE verifies all conclusions
- A CFWE will write all reports
- All case documentation and work product will be provided in the deliverables
- With RS&A, you get a team of CFWEs, not an individual

### **FOOTWEAR TECHNICAL REVIEW SERVICES:**

Is your agency short the necessary personnel to conduct technical/verification reviews? Maybe one of your examiners is on extended leave, and your agency needs temporary assistance with technical reviews.

- All Technical / Verification Reviews are completed by IAI Certified Footwear Examiners (CFWE)
- All Technical Reviews are completed based on your agency's procedures

### **ACCREDITED TO ISO/IEC 17025**

RS&A is the only private forensic laboratory offering footwear examination that is accredited to ISO/IEC 17025 standards.

RS&A has the accredited facilities, the framework, and the personnel to handle all of your footwear examination needs.

**1-866-832-6772**

**[www.RonSmithandAssociates.com](http://www.RonSmithandAssociates.com)**

## LOCATION & CONTACT INFORMATION

### Headquarters Laboratory

Street Address: 9335 Highway 19 N

Mailing Address: P.O. Box 670

Collinsville, MS 39325

Toll Free: 1-866-832-6772

Phone: 601-626-1100

Fax: 601-626-1122

## COMPANY WEBSITE

Visit us online at:

[www.RonSmithandAssociates.com](http://www.RonSmithandAssociates.com)



## DIVISION CONTACTS

### Training Division

[training@ronsmithandassociates.com](mailto:training@ronsmithandassociates.com)

### Consulting Division

[consulting@ronsmithandassociates.com](mailto:consulting@ronsmithandassociates.com)

### Testing Division

[testing@ronsmithandassociates.com](mailto:testing@ronsmithandassociates.com)

### Quality Management Division

[quality@ronsmithandassociates.com](mailto:quality@ronsmithandassociates.com)



## JOIN OUR EMAIL LIST

[www.RonSmithandAssociates.com/Email](http://www.RonSmithandAssociates.com/Email)

## SOCIAL MEDIA LINKS



[www.facebook.com/RonSmithandAssociatesInc](https://www.facebook.com/RonSmithandAssociatesInc)



<https://www.instagram.com/ronsmithandassoc/>



[https://twitter.com/RSA\\_Forensics](https://twitter.com/RSA_Forensics)



## QUICK REFERENCE

RS&A COMPANY INFORMATION.....	Pages 1 & 2
CLASSROOM TRAINING.....	Page 3
CLASSROOM TRAINING CURRICULUM.....	Page 4
ONLINE FORENSIC TRAINING.....	Page 5
TRAINING EXERCISES.....	Page 6
SEARCHING SMART PLAYING CARDS.....	Page 6
PALM PRINT SEARCHING SMART BOOK.....	Page 6
INTERNATIONAL LATENT PRINT EXAMINER TRAINING ACADEMY.....	Pages 7 & 8
PROFICIENCY TESTING.....	Pages 9 & 10
CONSULTING SERVICES.....	Page 11
BACKLOG REDUCTION SERVICES.....	Page 12
COMPETENCY TESTING FOR LPE's.....	Page 13 & 14
QUALITY MANAGEMENT SERVICES.....	Page 15
ONLINE VISUAL ACUITY ASSESSMENT.....	Page 16
FOOTWEAR SERVICES.....	Page 17
RS&A CONTACT INFORMATION.....	Page 18

**1-866-832-6772**

**[www.RonSmithandAssociates.com](http://www.RonSmithandAssociates.com)**